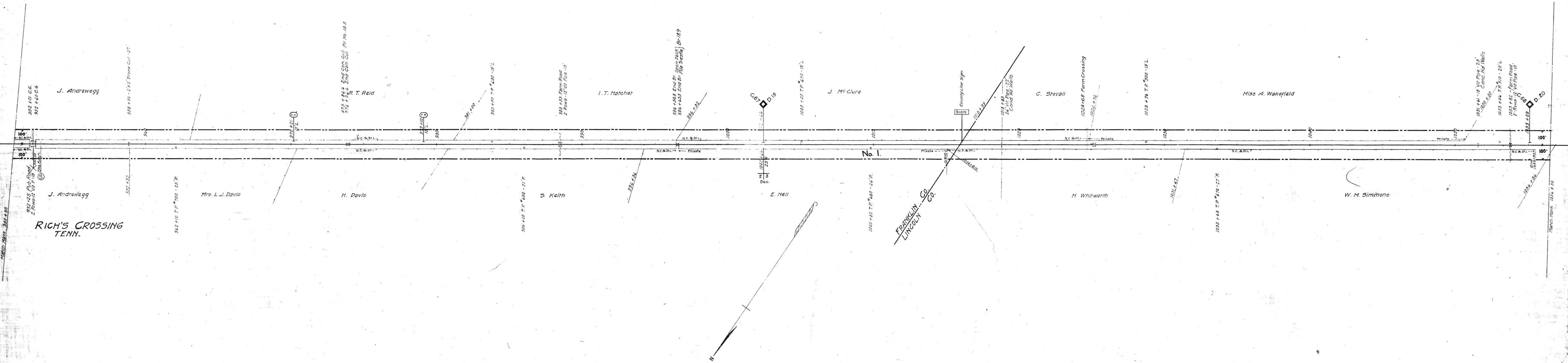


Note 1- Charter width claimed under decisions of Tennessee Courts.



RIGHT-OF-WAY AND TRACK MAP  
 NASHVILLE, CHATTANOOGA AND ST. LOUIS RY.  
 COLUMBIA BRANCH

STATION 950+90 TO STATION 1055+50  
 SCALE, 1 IN. = 200 FT. JUNE, 30, 1915

Sheet No. 10 of 47 Sheets of  
 Columbia Branch from survey  
 station 950+90 to survey station  
 1055+50  
 Engineer

OFFICE OF CHIEF ENGINEER  
 NASHVILLE, TENN.  
 M.P. 18.0 to 20.0

052-005

20.1