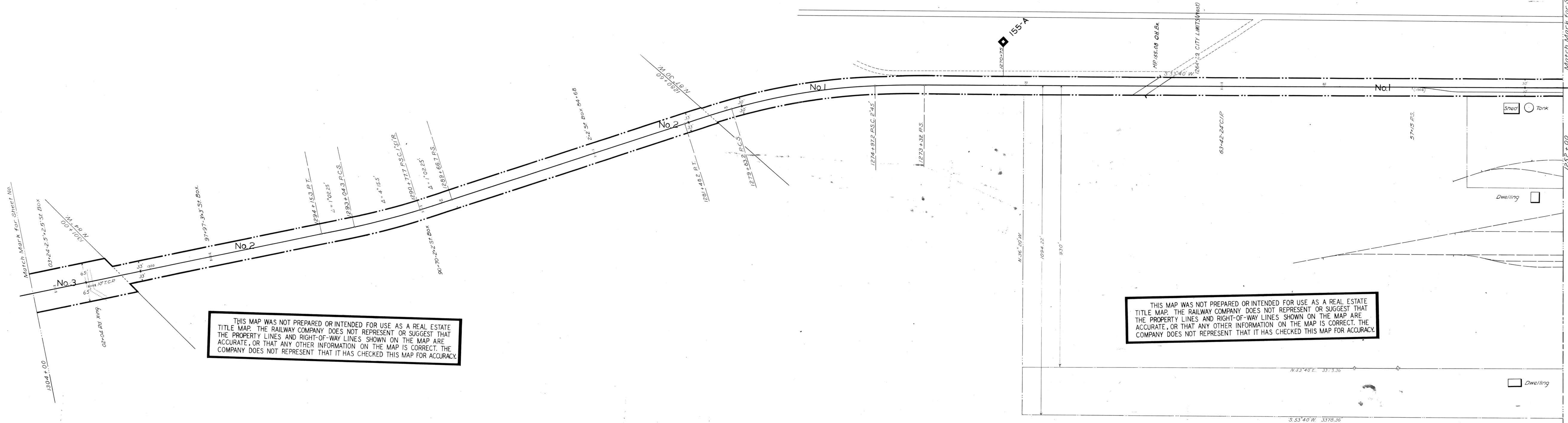


LOUDON COUNTY, TENN.
LENOIR CITY, TENN.



THIS MAP WAS NOT PREPARED OR INTENDED FOR USE AS A REAL ESTATE TITLE MAP. THE RAILWAY COMPANY DOES NOT REPRESENT OR SUGGEST THAT THE PROPERTY LINES AND RIGHT-OF-WAY LINES SHOWN ON THE MAP ARE ACCURATE, OR THAT ANY OTHER INFORMATION ON THE MAP IS CORRECT. THE COMPANY DOES NOT REPRESENT THAT IT HAS CHECKED THIS MAP FOR ACCURACY.

THIS MAP WAS NOT PREPARED OR INTENDED FOR USE AS A REAL ESTATE TITLE MAP. THE RAILWAY COMPANY DOES NOT REPRESENT OR SUGGEST THAT THE PROPERTY LINES AND RIGHT-OF-WAY LINES SHOWN ON THE MAP ARE ACCURATE, OR THAT ANY OTHER INFORMATION ON THE MAP IS CORRECT. THE COMPANY DOES NOT REPRESENT THAT IT HAS CHECKED THIS MAP FOR ACCURACY.

TRACK NOS. REFERS TO I. C. C. LIST NOS.

STATION MAP

SOUTHERN RAILWAY COMPANY

Operated by the

SOUTHERN RAILWAY COMPANY

KNOXVILLE DIVISION

STATION 1252+00 TO STATION 1304+00

SCALE: 1 IN. = 100 FT. DECEMBER 31, 1927.

053-005

Office of Special Engineer
Washington, D. C.

V-64
S-6c

STATIONING REFERS TO I. C. C. INVENTORY CHAINAGE 1916.

