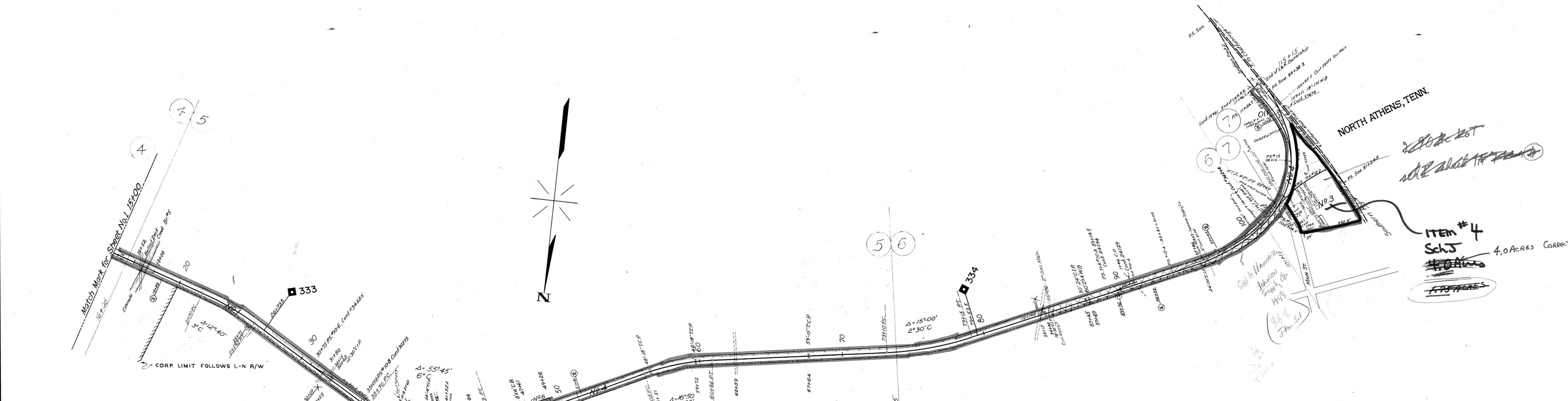


A.F.E. No.	Date Comp.	Description of Change
10061	4-13-18	Purchased Par. No. 637 Deed #11657
10895	12-23-27	80' Ext. to track #12-A
10895	9-28-28	Const. of Trk. #10-A
10895	6-4-43	C.H. Hwy. Br. (50%)
10895	8-10-28	Track #19 ext. 80'
29025	7-2-42	Const. Trks. #10-C, #10-D & relocation of Trk. #10-A
30773	1-14-43	Rel. of Trks. #10-C, #10-D & relocation of Trk. #10-A
24252	9-21-38	Const. of Trk. #10B
31179	6-4-43	Ext. of Trk. #12 - New L. 470'
34155	1-21-46	Const. of Trk. #12A C.&I. 188' P.S. to C.I.P.I. L&N
34739	4-4-46	Const. of Trk. #10E 490' l.p.
46119	11-17-55	Work on Br. #5

No.	Grantor	Grantee	Inst't	Date	Record	Cust. No.	Remarks
1	Adverse possession	Acresage included in prol. 28, Map #1					
2	Track removed September 20th, 1916	R/W reverts					
3	C.E. Lucky	Tellico R.R. Co.	Deed	June 2, 1908	D.B. 2, P.73	Jun. 3, 1908 11158	
4	Held by Adverse Possession						
5	Adverse possession	L&N R.R. Co.	Deed	April 13, 1918	D.B. 3-D, P. 256	April 26, 1918 11657	
6	Nat. Hornsby	L&N R.R. Co.	Deed	" " " " " " " "	" " " " " " " "	" " " " " " " "	11637
7	Nat. Hornsby	L&N R.R. Co.	Deed	" " " " " " " "	" " " " " " " "	" " " " " " " "	11637



L.F. No.	Cont. No.	Date	Party	Description
25690	24094	6-5-28	Athens Planning Mills	Const. of spur track #10-A
27457	24129	7-27-28	Athens Planning Mills	an 18' galvanized iron pipe x-ing at Sta. 91+04 (over Trk. #10-A) (CANCELLED)
33621	29822	11-19-37	Bond-Woolf & Co.	a 10'x12' frame bldg. 74' from Trk. #12 Sta. 106+35 - Trans. to North Branch 2-28-50
19377	31082	9-25-39	Athens, Tenn. City	3" galv. iron water main increased in 4" pipe x-ing at Sta. 41+22.8 (See map 1 for additional info) Cont. 36255
	30273	5-12-38	C.L. Harjovich	Const. of Trk. #10-B (See Form 1825)
	32361	7-3-41	Board Public Utilities	3 wire x-ings at Stas. 41+8, 96+39 and 103+52
22983	24615-2	9-17-41	L.D. Stapleton	Pt. of par. #3 leased (0.4 Ac.) Also 2" Galv. Iron Pipe on R/W at Sta. 104+72.5 - Trans. to The Pure Oil Co. 7-14-49
	32649	12-6-41	City of Athens	1 1/2" water pipe under at Sta. 38+17.8
33235	28932-3	7-3-42	Athens Oil Co.	Pt. of par. #3 leased (4000') Also Dbl. 2" Galv. Iron Pipe on R/W
29923	27317-3	8-18-42	McMinn Co. Road Dept.	Leased pt. of par. #3 (2560') and Railway 15' wide, Also 2" Galv. Iron Pipe - Memo. 3-19-48 for ingress & egress R/W
31727	28017-2	9-5-44	L.W. Watterbarger	2.5' x 3' Con. Housing Box on R/W 33' from Trk. #13 at Sta. 112+34.5
	34294	9-27-45	Hammer Supply Co.	Const. Trk. #12A C&I basis 33' x 150' 4' 9" 52' Trk. #12 - Trk. #12 - 505' E.R. 3-11-60
	34525	2-6-46	Ralph B. Mitchell & Oliver A. Smith, Jr.	Const. Trk. #10-E, 490' l.p. at Sta. 30+75 P.S. to C.I.P.I. 3-1-46
	34525	3-1-46	Athens Block Co.	Cov. track #10-E, P.S. to C.I.P.I. 134' - L&N - Trans. to TENNESSEE IMPLEMENT CO. 3-7-60 - User: MERRIMAN CONCRETE PRODUCTS, INC. 3-8-60
39004	34294	1-10-47	Hammer Supply Co.	a conveyor pit and a concrete block retaining wall on R/W and Under Trk. #12-A
	35470	11-29-46	The Athens Chair Co.	Permit for 10'x20' platform at Sta. 108+39.7
	28111	3-12-35	S. Oil Co.	Encl. on pt. of par. #4, at Sta. 109+79, 4-2" Pipes
35217	36255	1-15-48	City Board of Public Utilities	Power Lines and Pole with attachments on and x-ing R/W Sta. 38+28.8
22983	24615-3	3-19-48	L.D. Stapleton	Leased R/W for Bldg. pt. of par. #3 (3064') - Trans. to The Pure Oil Co. 7-14-49
35212	37678	9-22-49	Board of Public Utilities	Power Line x-ing at Sta. 109+65.5
	15761	1-31-1888	East Tenn. Va. and Ga. R.R. Co.	Cont. agreement for connection with (now known) L&N R.R. Co. and Sou. R.R. Co.
	25769-1	12-5-30	Tenn. Electric Power Co.	General Cont. agree. for power lines to be or already on, over, under, or x-ing R/W at divers points
22983	21628-3	2-17-44	Sinclair Refining Co.	Leased R/W pt. of par. #3 (0.28 Ac.) by Main St. Also 2-2" Galv. Pipes 85' to Trk. #12

L.F. No.	Cont. No.	Date	Party	Description
19377	35706		City of Athens	6" Gas Pipe Line, enclosed in 10" casing
19377	39077		City of Athens	2" Gas Pipe Line, enclosed in 4" casing at Sta. 65+00
48116	10750		Southern Railway Co.	3" Gas Pipe Line, enclosed in 6" " " at Sta. 100+95.5
38004	34294	1-26-54	Hammer Supply Co.	Lease of land - 44556 - 44557 - 44558 - 44559 - 44560 - 44561 - 44562 - 44563
42320	42306	7-27-54	Athens Utility Board	2 conveyors, retaining wall and pt. of bldg. on R/W
43300	43325	10-12-57	McMinn Barlow Corp.	Loading Ramp & Lease 44' Trk. #12
	45843	11-11-59	Hammer Supply Co.	Wire x-ing - Sta. 28+39.5
	46741	10-17-60	Hammer Supply Co.	Lease of land 12'x100' at Sta. 96+10
19377	26180	10-27-60	City of Athens	1" Gas Pipe, under track at Sta. 44+00.3
	47428	7-18-61	Athens Utility Board	12" sewer crossing U.S. 475+6.6
				8" Waterline " " " 38+3.8

RIGHT OF WAY AND TRACK MAP  
LOUISVILLE AND NASHVILLE R. R. CO.  
KNOXVILLE DIVISION  
ATHENS AND TELlico BRANCH  
STATION 15+00 TO STATION 113+25  
SCALE 1 INCH = 200 FT. JUNE 30, 1917  
OFFICE OF CHIEF ENGINEER  
LOUISVILLE, KY.