

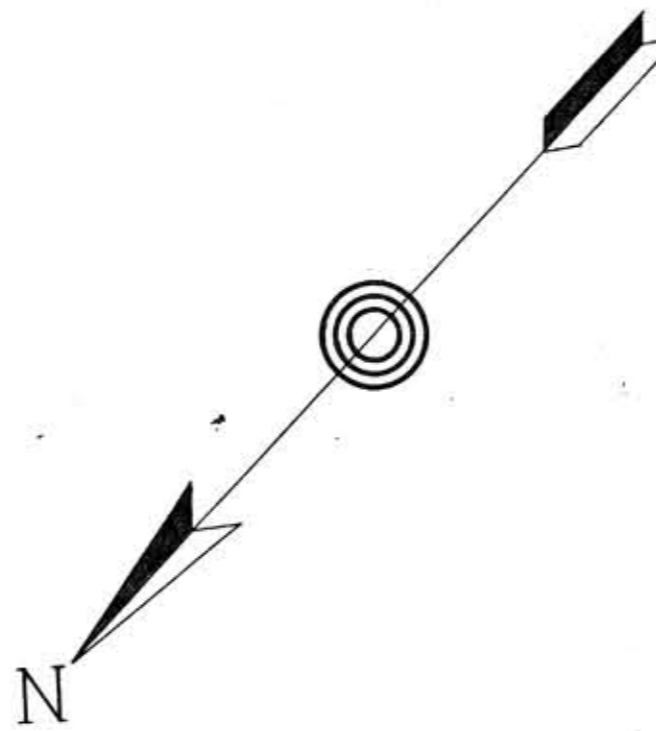
33

Match Mark for Next Sheet 17774+80

Cont. 36748 9-13-48 Fort Loudoun Electric Cooperative Wires x-ing of Sta 93+31
20242 2-5-37 Saw Mill #1 & 701 Underground Cable x-ing Sta. 17793+06

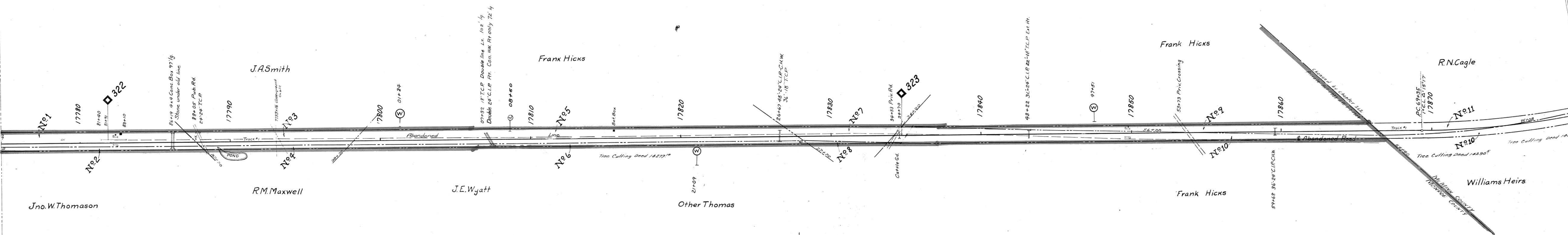
29-24

MONROE CO TENN.



Entire Right of Way fenced on both sides except on Left Side from 786+19 to 788+05.

M^c MINN CO TENN.



33

Match Mark for Next Sheet 17880+40

RIGHT OF WAY AND TRACK MAP
LOUISVILLE AND NASHVILLE R. R. CO.
KNOXVILLE DIVISION
STATION 17774+80 TO STATION 17880+40
SCALE: 1 INCH = 200 FT. JUNE 30 1917.

SHEET NO. 24 OF 31 OF KNOXVILLE DIVISION FROM SURVEY
STATION 17774+80 TO SURVEY STATION 17880+40

N. C. Williams
VALUATION ENGINEER

054-008

V-29
24

11-1