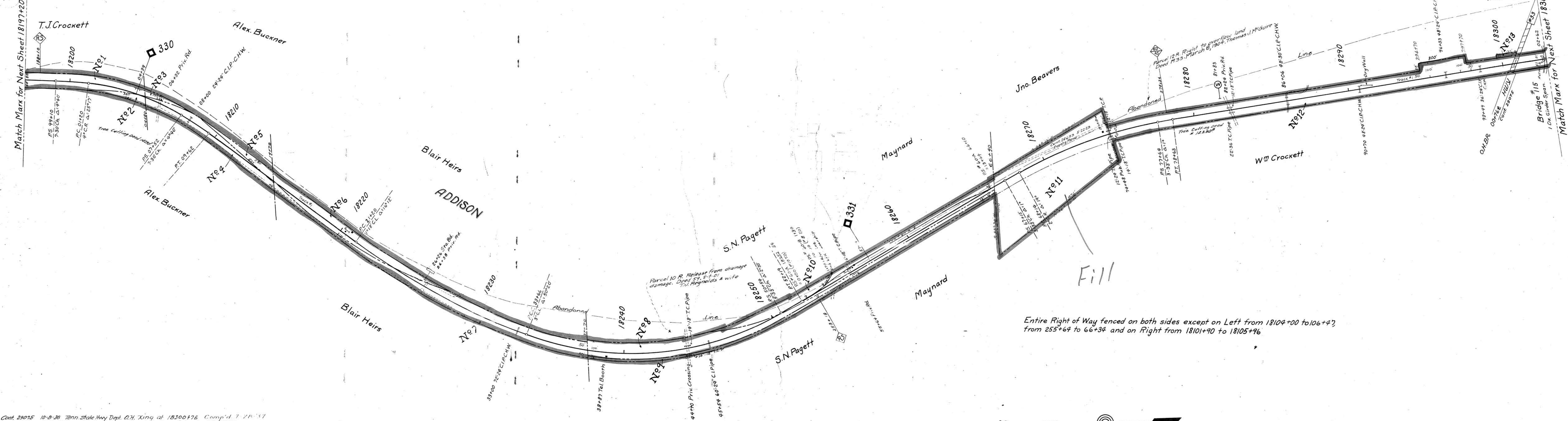


A.F.F.	Date Comp'd	Description of Change
16839	5-10-33	1st of Trk #60 Rem. (This incl. 50.70.)
34877	26	Rel of Trk #60
33796	3-6-34	Inst. Spring Sw. at Sta 18255+39, RS Trk #59.
40106	5-31-52	Track # 59 retired
58003	4-22-66	Const. 1364' incl. 2 TD's of trk #60A & 179' incl. 1 TD of trk #60B

41



Entire Right of Way fenced on both sides except on Left from 18104+00 to 106+4', from 255+64 to 66+34 and on Right from 18101+90 to 18105+96



Cont. 29015 10-9-36 Tenn. State Hwy Dept. O.N. King at 18300+76 Comp'd 7/28/37
 Cont. 51118 3-22-65 Beacuit Corporation - Const. System of tracks V.S. 52+54

RIGHT OF WAY AND TRACK MAP
 LOUISVILLE AND NASHVILLE R. R. CO.
 KNOXVILLE DIVISION
 STATION 18197+20 TO STATION 18302+80
 SCALE-1 INCH=200 FT. JUNE 30 1917.

O. Beacuit
 VALUATION ENGINEER

054-012

V-29
 28

M^o MINN CO. TENN.