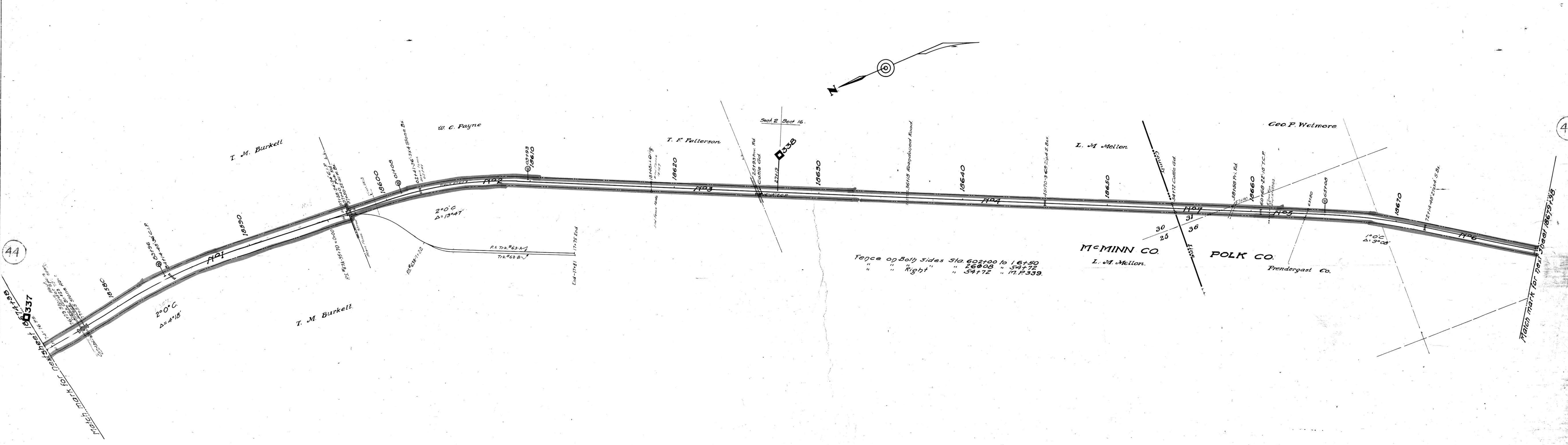


44

44



Cont. 34888 6-18-45 Bd. Pub. Util. - Athens, Tenn. Wire over at 18654+05  
 " 48113 7-27-55 Note - Const. 1860 Fence - 24 3/4' 63' 1/2" to 18627 41 97' 10" to 18640  
 " 48113 5-4-62 Etowah Utilities Dept. - Wire X-ing over sta. 18597+64  
 48930 3-19-62 J.M. Huber, Corp. Const. Trk. 63A & 63B 1860' Plan.

Fence on Both Sides Sta 602+00 to 16+50  
 " " Right " 268+03 " 34+72  
 " " " " 54+72 " 11, P. 339.

RIGHT OF WAY AND TRACK MAP  
 LOUISVILLE AND NASHVILLE R. R. CO.  
 ATLANTA DIVISION 'OLD LINE'  
 STATION 18574+38 TO STATION 18679+98

SHEET NO. 3/4 OF 71 OF ATLANTA DIVISION - OLD LINE FROM SURVEY  
 STATION 18574+38 TO SURVEY STATION 18679+98

J. H. ...  
 SURVEY ENGINEER

JUNE 30 1977  
 OFFICE OF CHIEF ENGINEER  
 LOUISVILLE, KY.

054-017

V29  
 31A