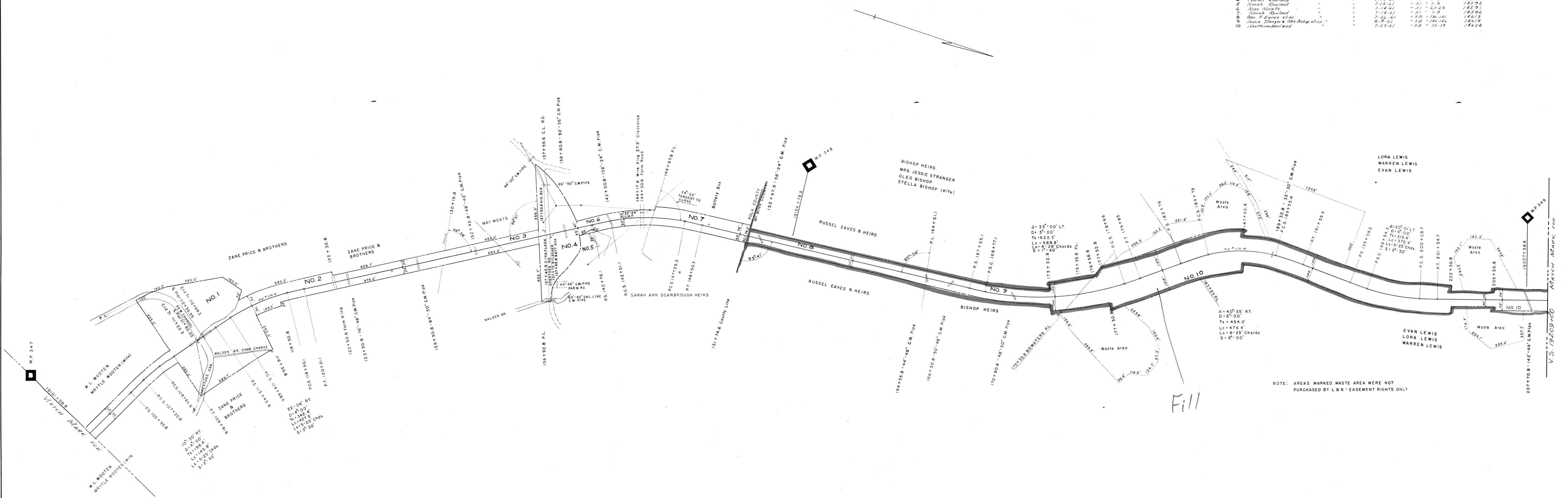


NO.	GRANTOR	GRANTEE	INST.	DATE	RECORD	CUST. NO.	REMARKS
1	W.L. Wooten, et al.	L & N R.R. Co.	Deed	7-18-61	DB 57 P. 19, 20, 11	14530	
2	W.L. Wooten, et al.	"	"	7-18-61	" 57 " 23-24	14531	
3	May Moats	"	"	7-18-61	" 51 " 7-8	14532	
4	Norah Rowland	"	"	7-18-61	" 51 " 7-8	14532	
5	Norah Rowland	"	"	7-18-61	" 51 " 7-8	14532	
6	May Moats	"	"	7-18-61	" 51 " 23-24	14531	
7	Norah Rowland	"	"	7-18-61	" 51 " 7-8	14532	
8	Geo. S. Evans et al.	"	"	7-26-61	" 50 " 136-141	14613	
9	Jessie Stranger & Cleo Bishop et al.	"	"	8-8-61	" 50 " 141-146	14614	
10	Northumberland	"	"	7-25-61	" 50 " 75-79	14624	



NOTE: AREAS MARKED WASTE AREA WERE NOT PURCHASED BY L & N - EASEMENT RIGHTS ONLY

COUNT. NO. DATE DESCRIPTION
 48019-1 5-22-62 Volunteer Electric Corp - Flashing light signal at Piney Grove Road

RIGHT OF WAY AND TRACK MAP
LOUISVILLE AND NASHVILLE R.R. CO.
ATLANTA DIVISION "NEWLINE"
BOWATER SPUR
 STATION 19101 + 98.8 TO STATION 19209 + 00

SCALE: 1 INCH = 200 FT. MAY 23, 1963

OFFICE OF CHIEF ENGINEER
 LOUISVILLE, KY.

054-019

V 29
 35 B

POLK COUNTY MC MINN COUNTY