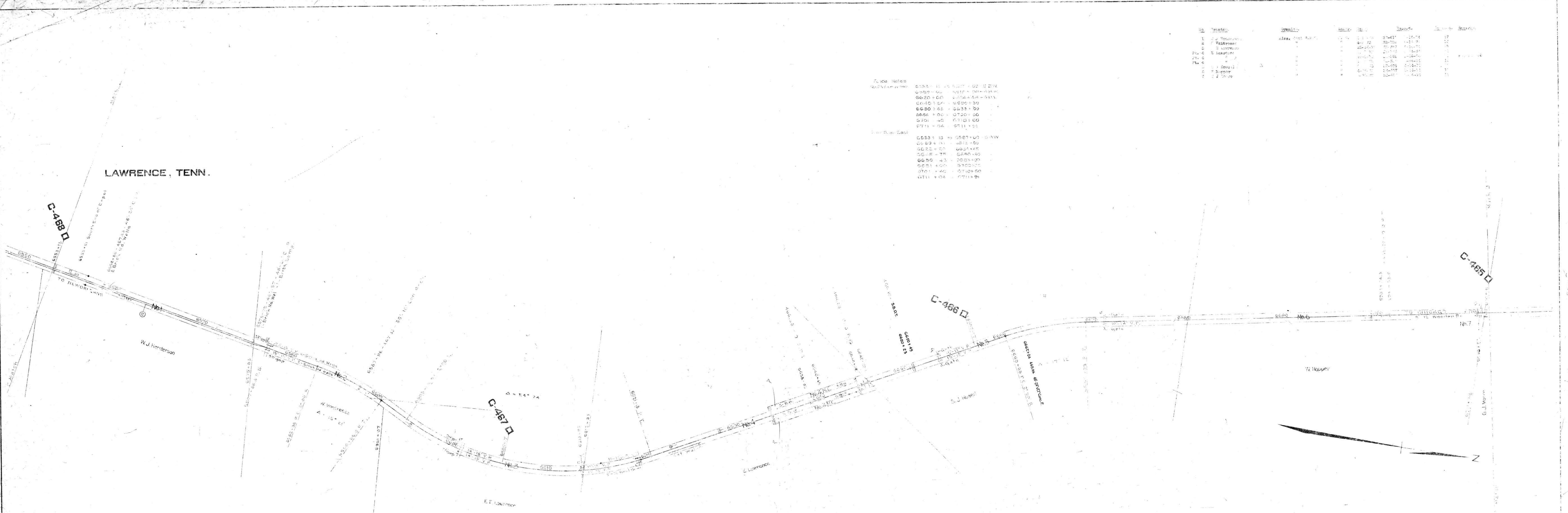


No.	Tractor	Operator	Grade	Height	Speed	Time	Remarks
1	J. Henderson	W. J. Henderson	1.1	4.5	37-41"	17	
2	V. Johnson	W. J. Henderson	1.1	4.5	37-41"	17	
3	E. Johnson	W. J. Henderson	1.1	4.5	37-41"	17	
4	E. Johnson	W. J. Henderson	1.1	4.5	37-41"	17	
5	E. Johnson	W. J. Henderson	1.1	4.5	37-41"	17	
6	E. Johnson	W. J. Henderson	1.1	4.5	37-41"	17	
7	E. Johnson	W. J. Henderson	1.1	4.5	37-41"	17	

Curve Notes

6553 + 13	to	6587 + 00	100' R
6553 + 00	to	6575 + 00	100' R
6620 + 00	to	6624 + 44	100' R
6640 + 00	to	6650 + 00	100' R
6650 + 45	to	6653 + 00	100' R
6660 + 00	to	6700 + 00	100' R
6700 + 00	to	6710 + 00	100' R
6711 + 00	to	6711 + 00	100' R



INDEX NO.	WORK BOOK	DESCRIPTION	DATE COMPLETED
1			
2			
3			
4			
5			
6			
7			
8			
9			
10			
11			
12			
13			
14			
15			
16			
17			
18			
19			
20			

SHEET No. 0224 Validation Section 1-Tenn-12 Jackson to Tenn-Ky State line of the Illinois Central Railroad Company, from Survey station 6557+84 to survey station 6813+10  
*W. J. Henderson*  
 Validation Engineer

RIGHT-OF-WAY AND TRACK MAP  
 CHICAGO, ST. LOUIS & NEW ORLEANS R.R.  
 OPERATED BY THE  
 ILLINOIS CENTRAL RAILROAD  
 JACKSON TO TENN.-KY STATE LINE  
 STATION 6553+13 TO STATION 6711+00  
 M.P. C-466 TO M.P. C-465  
 SCALE 1" = 300 FT  
 JUNE 29 1927  
 REVISION  
 OFFICE OF CHIEF ENGINEER  
 CHICAGO, ILL.

057-018