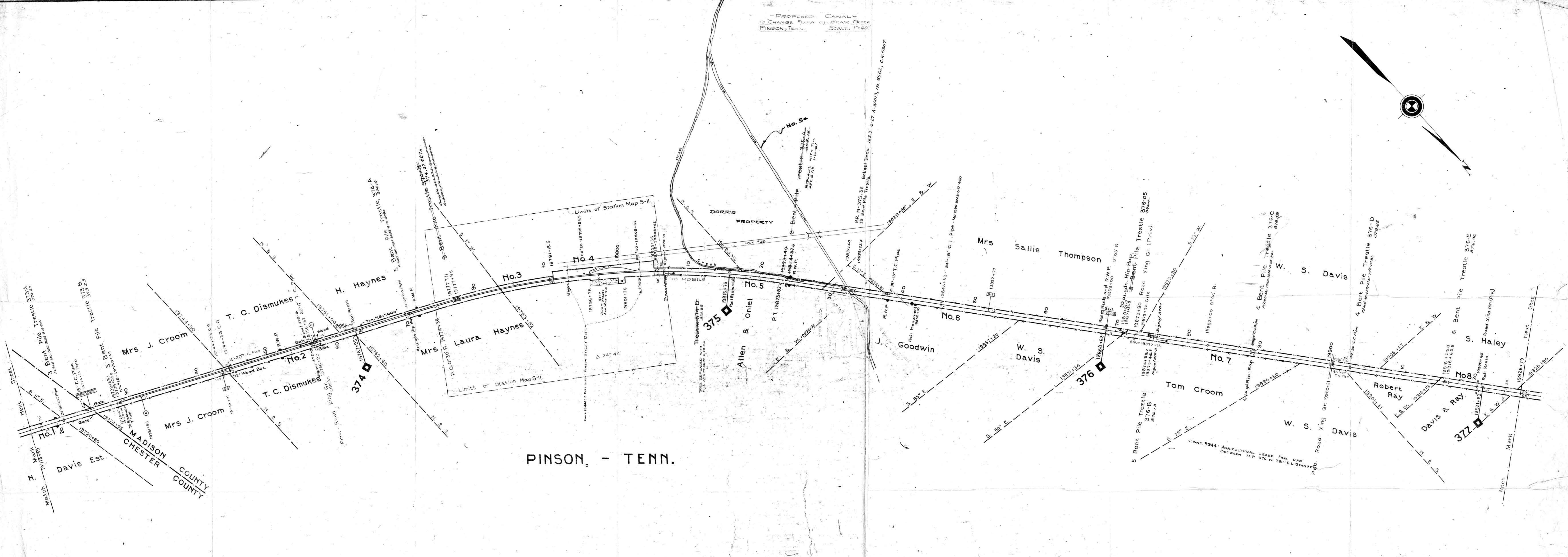
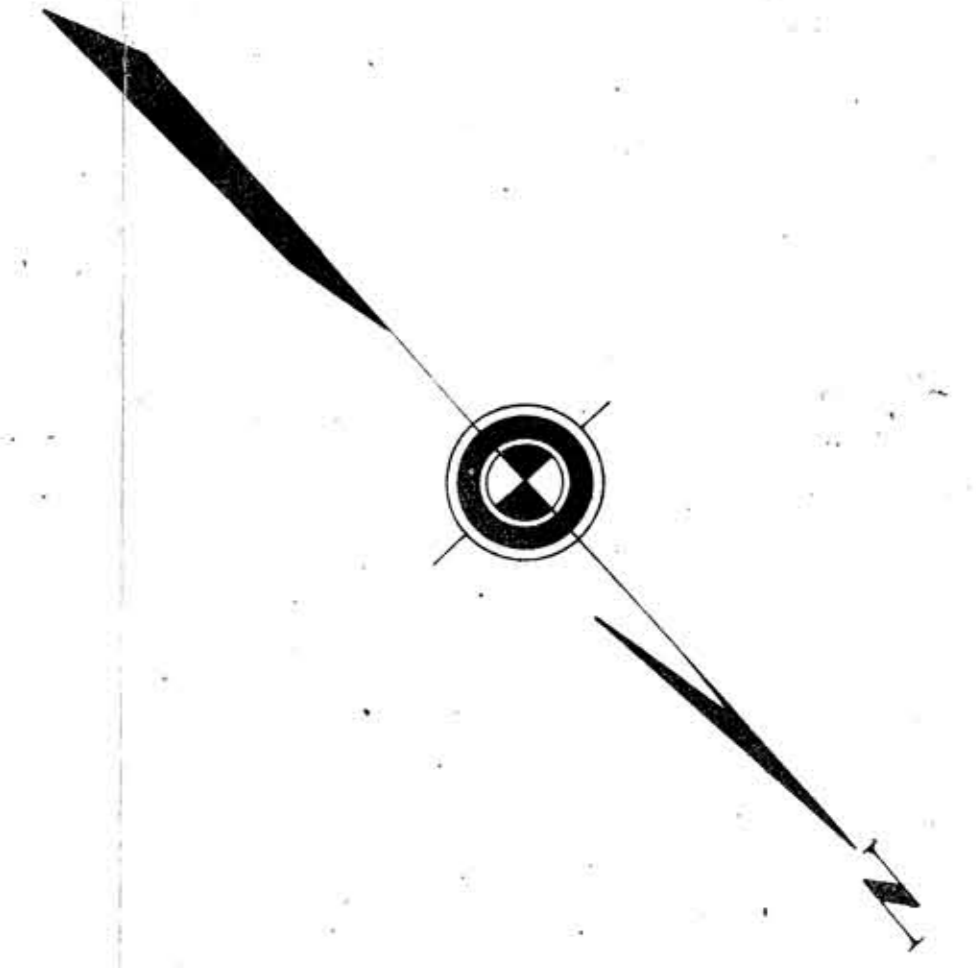


PROPOSED CANAL
TO CHANGE FLOW OF BEAR CREEK
PINSON, TENN. SCALE: 1"=40'



PINSON, - TENN.

CHESTER Co. TENN.

PINSON, TENN.

MADISON Co. TENN.

Sheet No. 11. of 30 Sheets of Mobile & Ohio R.R. from Survey Station 19715+59 to Survey Station 19926+79. Correct:

RIGHT-OF-WAY AND TRACK MAP
MOBILE & OHIO R. R.
MAIN LINE
STATION 19715+59 TO STATION 19926+79
SCALE 1-IN-400 FT. JUNE 30, 1915.
OFFICE CHIEF ENGINEER MAINTENANCE OF W. & S.
MOBILE - ALA.

057-030

Engineer.

V-5
11

Corrected:
Oct. 20, 1917