

NUMBER	GRANTOR	GRANTEE	INSTRUMENT	DATE	RECORD	CUSTODIAN'S NUMBER	REMARKS
1	R. B. Hicks	G. M. & N. R. Co.	W. Dec.	Oct. 2, 1917	90, 142, No. 5, 1, 917	20	
2	W. R. Mainord			June 4, 1917	89, 432, No. 6, 1, 917	21	
3	Mrs. M. K. Jubeis			July 7, 1917	89, 449, No. 16, 1, 917	22	
4	Nathan Alston			Apr. 30, 1917	90, 428, No. 16, 1, 917	23	
5				Oct. 12, 1917	90, 144, No. 15, 1, 917	24	
6					147, No. 15, 1, 917	25	
7	Jim Harrison			May 1, 1917	89, 429, No. 6, 1, 917	24	
8	E. J. Rutherford			Nov. 16, 1917	90, 251, No. 50, 1, 917	25	
9	M. A. Futrell			Dec. 28, 1917	90, 420, No. 7, 1, 918	26	Condemned, Later settled
10	A. E. Floyd			Nov. 98, 1917	151, No. 15, 1, 917	27	
11	M. A. Futrell			Dec. 28, 1917	422, No. 7, 1, 918	28	
12	W. L. Mott			June 7, 1917	89, 450, No. 14, 1, 917	29	
13	M. A. Futrell			Oct. 1, 1919	93, 563, No. 14, 1, 919	31	
14	J. H. Trice			Nov. 21, 1917	90, 255, No. 30, 1, 917	29	
15	C. G. Bond			June 20, 1917	Circuit Ct. 7, 1, 918	30	
16	Bemis Bros Bag Co.			Feb. 19, 1918	90, 573, No. 14, 1, 918	31	
17	J. M. Hunt			Apr. 24, 1918	91, 123, No. 15, 1, 918	41	
18	R. B. Hicks			Jan. 7, 1920	94, 550, No. 7, 1, 920	42	
19	W. J. Ross			July 2, 1918	90, 138, No. 15, 1, 917	43	
20						44	

Included in Parcel 1, Next Sheet.
NOTE: For Parcels 14 to 27 Inclusive, See Supplemental Map 6, S. 11.

RIGHT OF WAY AND TRACK MAP

GULF, MOBILE & NORTHERN R. R.

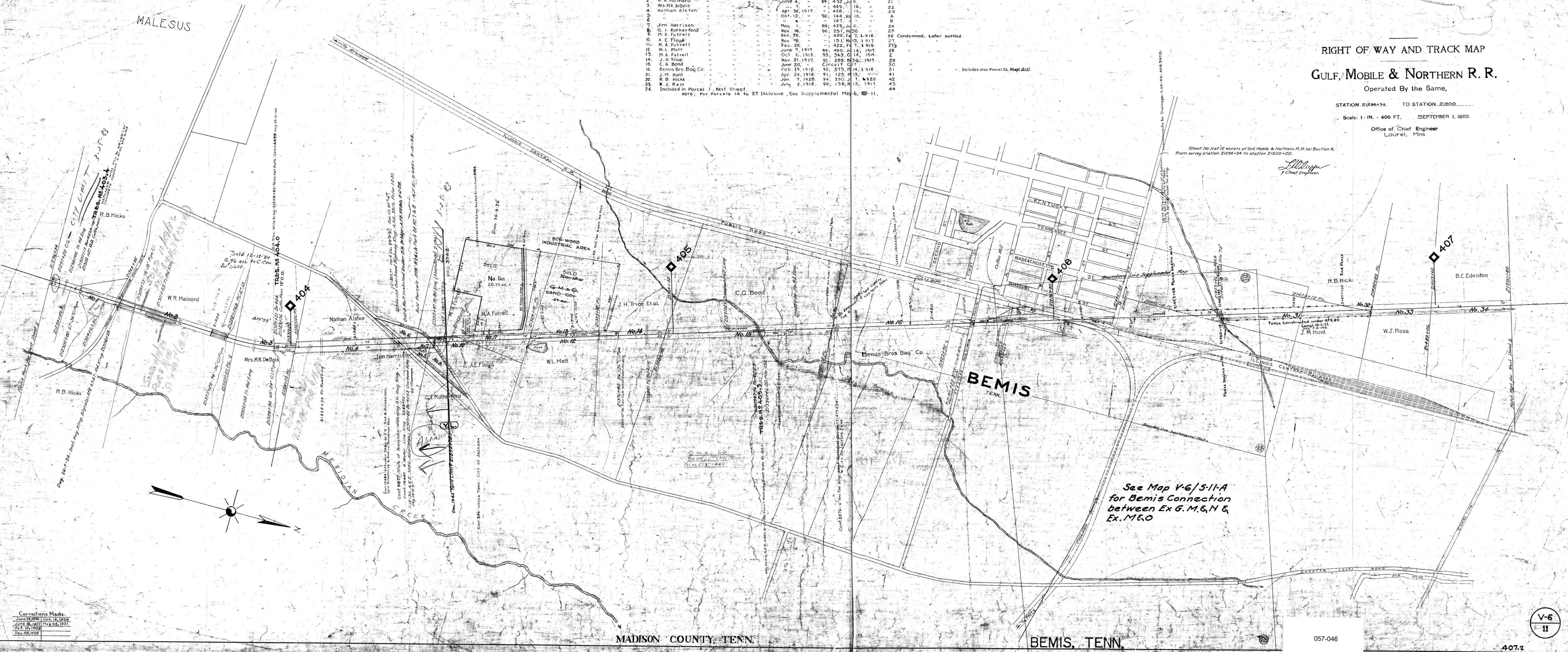
Operated By the Same,

STATION 21296+34 TO STATION 21500+00
Scale: 1 - IN. = 400 FT. SEPTEMBER 1, 1920

Office of Chief Engineer
Laurel, Miss.

Sheet No. 11 of 12 sheets of Gulf, Mobile & Northern R.R. Val Section 6,
From survey station 21296+34 to station 21500+00.

L. H. Hunt
Chief Engineer



See Map V-6/S-11-A
for Bemis Connection
between Ex. G. M. & N. &
Ex. M. & O.

Corrections Made:
June 19, 1916 Jan. 18, 1920
June 16, 1921 May 28, 1921
Oct. 10, 1922
Dec. 29, 1922

057-046

V-6
11

407.2