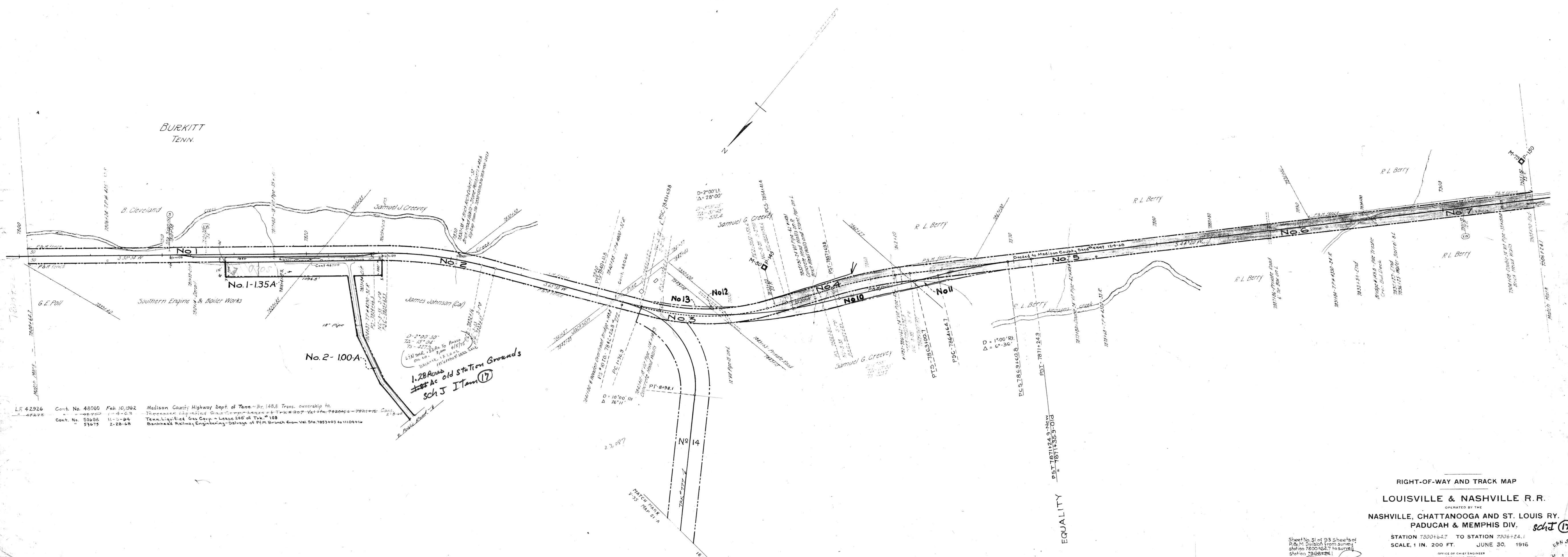


NO.	GRANTOR	GRANTEE	INSTRUMENT	DATE	RECORD	CURT. NO.	REMARKS
1	Benny Berrill	Tenn. Midland Ry. Co.	Condemnation	June 1, 1883	ME 10-92-Oct. 1, 1888	2681	
2	Henry Whitlow	Tenn. Midland Ry. Co.	Deed	Aug. 23, 1887	DB 66-42-Oct. 19, 1904	2637	
3	S. J. Gardner	Tenn. Midland Ry. Co.	Deed	June 10, 1887	DB 66-78-Oct. 19, 1904	2558	Note 1
4	Henry Whitlow	Tenn. Midland Ry. Co.	Deed	Aug. 23, 1887	DB 66-42-Oct. 19, 1904	2637	
5	D. S. Lacey	Tenn. Midland Ry. Co.	Deed	Aug. 24, 1887	DB 66-83-Oct. 19, 1904	2662	
6	Henry Whitlow	Tenn. Midland Ry. Co.	Deed	Aug. 23, 1887	DB 66-42-Oct. 19, 1904	2637	
7	Wm. J. Johnson	Tenn. Midland Ry. Co.	Deed	Jan. 16, 1906	DB 247 P 164	19049	Note 2
8	Dora C. Willis	L & N Railroad Co.	Deed				

NOTE 1- Deed grants following rights relative to adjoining lands (1) to cut timber which endangers roadway (2) to change course of stream (3) to waste and borrow.

NOTE 2- Title by possession. Deed said to have been made (see profile 542-13) but is not of record and cannot be found.



LF 42926 Cont. No. 48060 Feb 10, 1962 Madison County Highway Dept. of Tenn. Br. 148.8 Trans. ownership to
 42226 Cont. No. 50408 11-5-63 Tennessee Lighted Gas Corp. Lease of Trk # 207 Val Sta. 7920+6 - 7921+6 Cont. 2-3-68
 Cont. No. 53675 2-28-68 Tenn. Lighted Gas Corp. Lease 200' of Trk. # 108
 Bankhead Railway Engineering-Salvage of P.M. Branch from Val Sta. 7853+03 to 11109+14

RIGHT-OF-WAY AND TRACK MAP
 LOUISVILLE & NASHVILLE R.R.
 OPERATED BY THE
 NASHVILLE, CHATTANOOGA AND ST. LOUIS RY.
 PADUCAH & MEMPHIS DIV. **sch J 17**

Station 7800+64.7 TO STATION 7906+24.1
 SCALE, 1 IN. = 200 FT. JUNE 30, 1916
 OFFICE OF CHIEF ENGINEER
 NASHVILLE, TENN.
 M.P. 148.0 to 150.0