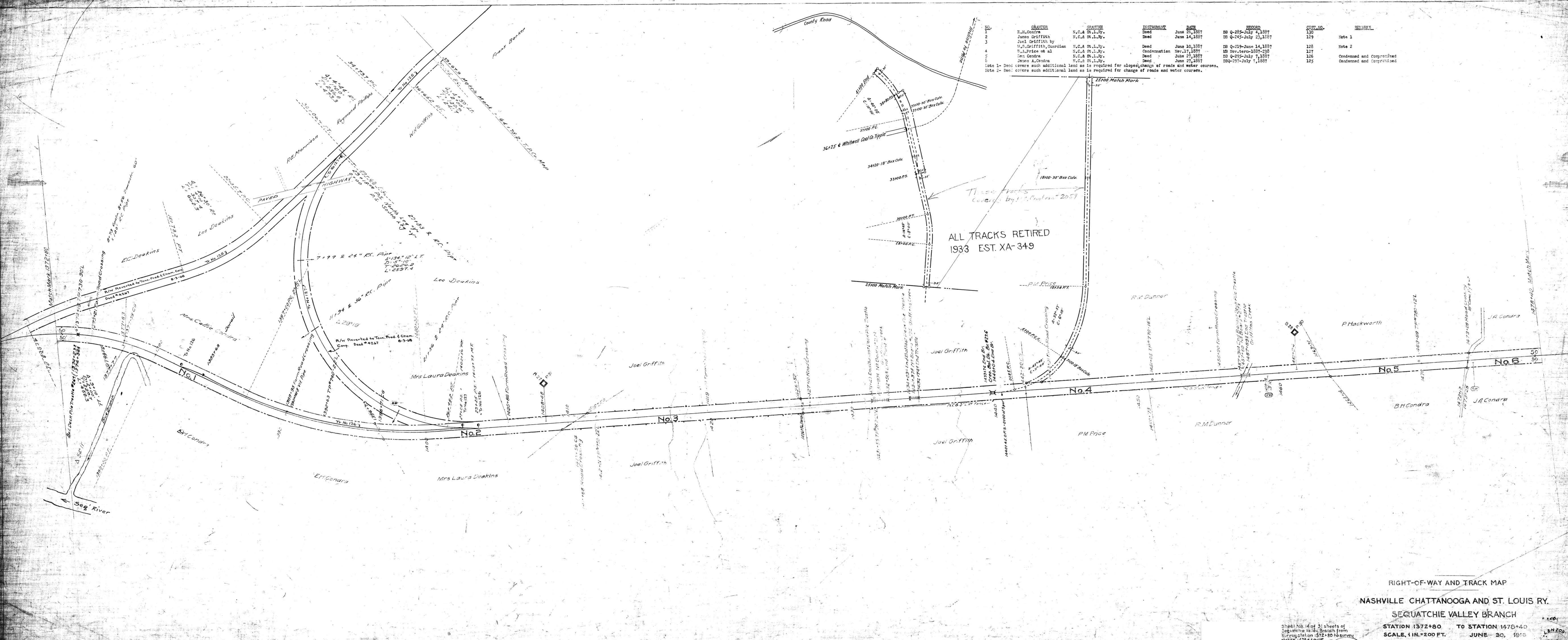


GRANTOR	GRANTEE	INSTRUMENT	DATE	RECORD	CUST. NO.	REMARKS
E.H. Condra	N.C.A. St. L. Ry.	Deed	June 26, 1887	DB Q-285-July 4, 1887	130	
James Griffith	N.C.A. St. L. Ry.	Deed	June 14, 1887	DB Q-245-July 23, 1887	129	Note 1
Joel Griffith by W.C. Griffith, Guardian	N.C.A. St. L. Ry.	Deed	June 10, 1887	DB Q-219-June 14, 1887	128	Note 2
W.A. Price et al	N.C.A. St. L. Ry.	Condemnation	Nov. 17, 1887	MS Nov. term-1887-238	127	
Gen Condra	N.C.A. St. L. Ry.	Deed	June 27, 1887	DB Q-295-July 7, 1887	126	Condemned and Comprised
James A. Condra	N.C.A. St. L. Ry.	Deed	June 27, 1887	DBQ-297-July 7, 1887	125	Condemned and Comprised

Note 1- Deed covers such additional land as is required for slope, change of roads and water courses.  
Note 2- Deed covers such additional land as is required for change of roads and water courses.



RIGHT-OF-WAY AND TRACK MAP  
 NASHVILLE CHATTANOOGA AND ST. LOUIS RY.  
 SEQUATCHIE VALLEY BRANCH  
 STATION 1372+80 TO STATION 1478+40  
 SCALE, 1 IN. = 200 FT. JUNE 30, 1915  
 OFFICE OF CHIEF ENGINEER  
 NASHVILLE, TENN.  
 Station Engineer

058-014

M.P. 263 to 283

MARION CO. TENN.

796 D-14