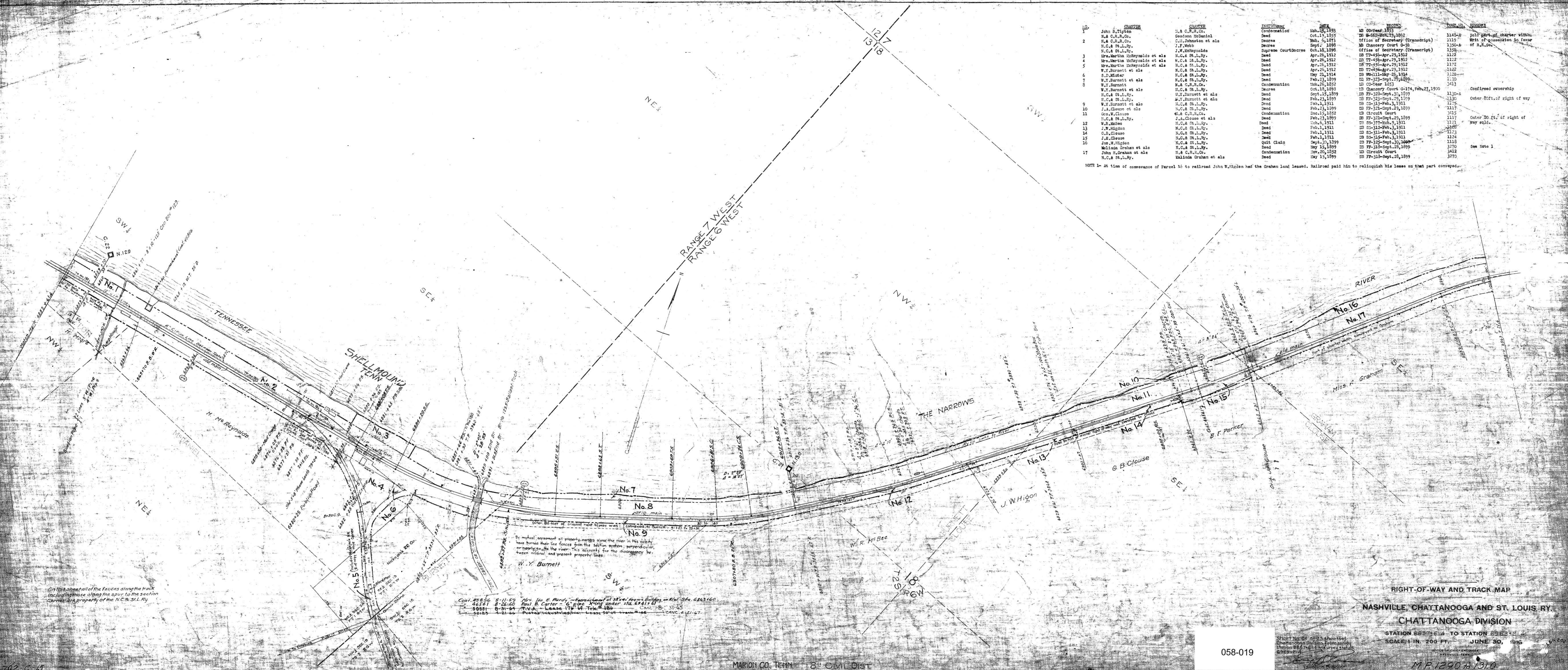


NO.	GRANTOR	GRANTEE	INSTRUMENT	DATE	RECORD	REMARKS
1	John B. Rippen	H.A. C.R.R. Co.	Condemnation	Oct. 25, 1893	DB 662-Mch. 23, 1892	1145-A
2	H.A. C.R.R. Co.	Gascon McDaniel	Deed	Oct. 17, 1895	DB 662-Mch. 23, 1892	1149
3	H.A. C.R.R. Co.	C.H. Johnston et als	Deed	Feb. 6, 1871	Office of Secretary (Manuscript)	1150
4	N.C. & St. L. Ry.	J.F. Webb	Deed	Sept. 1, 1898	MS Chancery Court 0-56	1150-A
5	N.C. & St. L. Ry.	J.W. McReynolds	Supreme Court Deed	Oct. 18, 1898	Office of Secretary (Manuscript)	1151
6	Mrs. Martha McReynolds et als	N.C. & St. L. Ry.	Deed	Apr. 26, 1912	DB 77-456-Apr. 29, 1912	1122
7	Mrs. Martha McReynolds et als	N.C. & St. L. Ry.	Deed	Apr. 26, 1912	DB 77-456-Apr. 29, 1912	1122
8	W.Y. Burnett et als	N.C. & St. L. Ry.	Deed	Apr. 26, 1912	DB 77-456-Apr. 29, 1912	1122
9	S.D. Minter	N.C. & St. L. Ry.	Deed	May 21, 1914	DB 77-111-May 26, 1914	1120
10	W.Y. Burnett et als	N.C. & St. L. Ry.	Deed	Feb. 23, 1899	DB 77-323-Sept. 29, 1899	1130
11	W.Y. Burnett et als	H.A. C.R.R. Co.	Condemnation	Feb. 23, 1899	MS Co-Recd 1853	3-13
12	W.Y. Burnett et als	H.A. C.R.R. Co.	Deed	Oct. 18, 1898	MS Chancery Court G-174, Feb. 27, 1900	1130-A
13	H.C. & St. L. Ry.	W.Y. Burnett et als	Deed	Sept. 15, 1899	DB 77-328-Sept. 30, 1899	1130
14	W.Y. Burnett et als	H.A. C.R.R. Co.	Deed	Feb. 23, 1899	DB 77-323-Sept. 29, 1899	1130
15	H.C. & St. L. Ry.	W.Y. Burnett et als	Deed	Feb. 23, 1899	DB 77-323-Sept. 29, 1899	1130
16	J.A. Clouse et als	H.A. C.R.R. Co.	Deed	Feb. 23, 1899	DB 77-323-Sept. 29, 1899	1131
17	Geo. W. Clouse	H.A. C.R.R. Co.	Condemnation	Dec. 15, 1892	MS Circuit Court	3-25
18	H.C. & St. L. Ry.	J.A. Clouse et als	Deed	Feb. 23, 1899	DB 77-323-Sept. 29, 1899	1131
19	W.R. McBea	H.A. C.R.R. Co.	Deed	Dec. 6, 1911	DB 50-177-Mch. 9, 1911	1131
20	J.W. Higdon	N.C. & St. L. Ry.	Deed	Feb. 1, 1911	DB 50-312-Feb. 3, 1911	1132
21	G.B. Clouse	N.C. & St. L. Ry.	Deed	Feb. 1, 1911	DB 50-311-Feb. 3, 1911	1133
22	J.A. Clouse	N.C. & St. L. Ry.	Deed	Feb. 1, 1911	DB 50-315-Feb. 3, 1911	1134
23	Geo. W. Clouse	N.C. & St. L. Ry.	Quit Claim	Sept. 30, 1899	DB 77-325-Sept. 30, 1899	1133
24	Malinda Graham et als	N.C. & St. L. Ry.	Deed	May 15, 1899	DB 77-318-Sept. 28, 1899	3-70
25	John H. Graham et als	H.A. C.R.R. Co.	Condemnation	Nov. 20, 1892	MS Circuit Court	3-12
26	H.A. C.R.R. Co.	Malinda Graham et als	Deed	May 15, 1899	DB 77-318-Sept. 28, 1899	3-70

NOTE 1- At time of conveyance of Parcel 16 to railroad John W. Higdon had the Graham land leased. Railroad paid him to relinquish his lease on that part conveyed.



On this sheet all of the fences along the track including those along the spur to the section are a property of the N.C. & St. L. Ry.

Cont. 45834 8-11-59 Mrs. E. A. P. - Encumbrance of 28' x 4' from building on Riv. Sta. 624176
 46581 8-26-60 Paul B. Carter - 6' pipe Xing under sta. 624176
 50581 8-31-64 T.V.A. - Lease 170' of Trk. 186 Cont. 8-31-65
 52183 1-21-66 Peter Industries - Lease 50' of Trk. 186 Cont. 4-21-67

RIGHT-OF-WAY AND TRACK MAP
 NASHVILLE, CHATTANOOGA AND ST. LOUIS RY.
 CHATTANOOGA DIVISION
 STATION 62376+10 TO STATION 62632+10
 SCALE 1 IN. = 200 FT. JUNE 30, 1916
 SHEET NO. 058-019
 OF 10 SHEETS
 M.F. 1290 to 1310