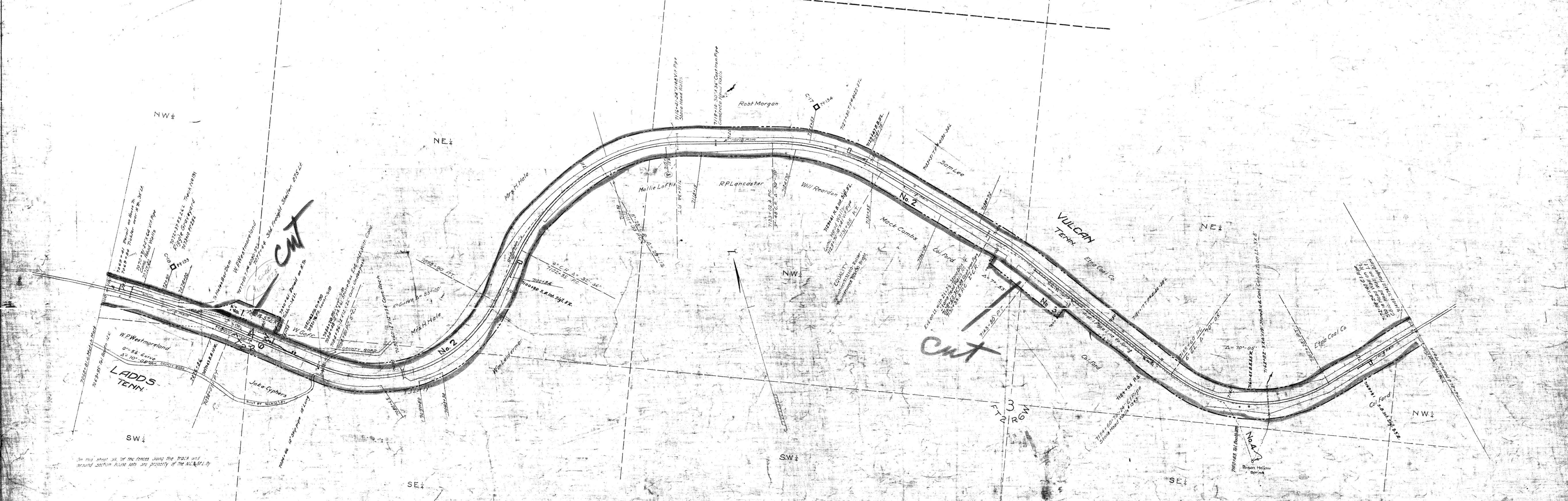


A.P.E. NO. 52635
 DATE 9-19-60
 DESCRIPTION Rpt. Sec. Houses at Vulcan Tenn.
 3-18-60
 4-23-60

NO.	GRANTOR	GRANTEE	INSTRUMENT	DATE	RECORD	CHESS. NO.	REMARKS
1	C.C. Anderson	N.C. & St. L. Ry.	Deed	Dec. 2, 1910	DB 65-125-Dec. 5, 1910	1127	
2	Sam Lee Jr.	N.C. & St. L. Ry.	Contract	Oct. 5, 1912	DB 65-201-Oct. 15, 1912	1151	See Note 1
3	E. Alley	N.C. & St. L. Ry.	Home Deed	July 2, 1918	DB L-505-July 3, 1918	1129	Release from damage due to overflow from culvert. Station 7130 Title by possession Spring and pipe line right of way.

NOTE 1- Charter with claimed by decisions of Tennessee Courts.

FRACTIONAL TOWNSHIP I
 FRACTIONAL TOWNSHIP II
 33 34
 4 3



On this sheet all of the fences along the track and around the houses are not shown unless they are shown on the original plan.

RIGHT-OF-WAY AND TRACK MAP
 NASHVILLE, CHATTANOOGA AND ST. LOUIS RY.
 CHATTANOOGA DIVISION

STATION 7068+81.4 TO STATION 7174+41.4
 SCALE 1 IN. = 200 FT. JUNE 30, 1916

058-021

Sheet No. 66 of 75 sheets of
 Chattanooga Division from survey
 No. 7068-7174-41.4
 7174+41.4

OFFICE OF THE ENGINEER
 NASHVILLE, TENN.
 M.P. 1330 to 1350