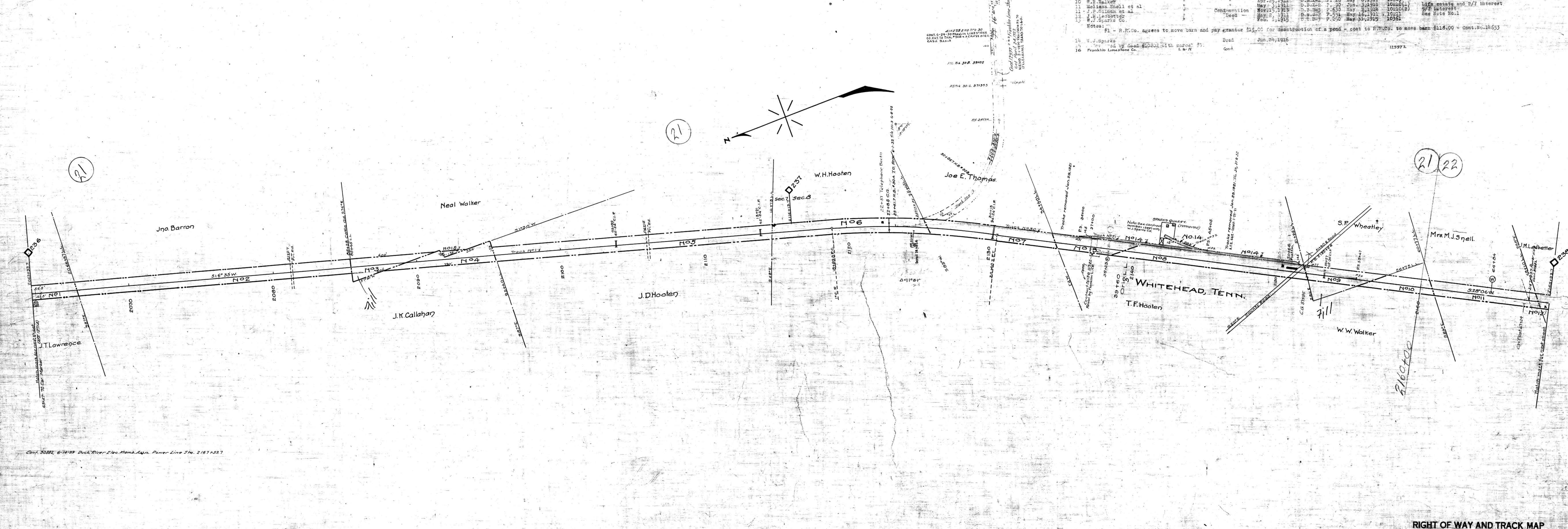


A.F.E. No.	Date Compl.	Desc. of Change
662	4-2-20	Trails, Per. Mark.
12714	1-23-21	Rel. of Tracks No. 30, 31, & 32
14360	12-20-29	Inst. of Train Length Markers 109, 110
14660	1-14-30	Cons. of Rev. 30-C 225.5' Exp. of Trk. 30-b. AS 74 304 3/4 3943 Remove 2.
19460	May 1932	Trans. of Trk. 30-a & 30-b to A.B. Steel
23174	12-13-37	Rel. of Trk. 30-A, 30-B, 30-C & Par. '16 reverts

No.	Grantor	Grantee	Instrument	Date	Record	Cont. No.	Remarks
1	J. Lawrence	W. R. R. Co.	Deed	Apr. 27, 1911	D. B. X-2 P. 23	10200	
2	J. Lawrence	"	"	May 1, 1911	D. B. X-2 P. 24	10201	
3	W. S. Walker	"	"	Jul. 15, 1911	D. B. X-2 P. 157	10202	Also conveys parcel 515.
4	J. I. Calahan	"	"	May 1, 1911	D. B. X-2 P. 50	10203	
5	J. D. Hooten	"	"	May 1, 1911	D. B. X-2 P. 53	10204	
6	W. H. Hooten	"	"	Apr. 26, 1911	D. B. X-2 P. 36	10205	
7	J. E. Thomas	"	"	May 1, 1911	D. B. X-2 P. 65	10206	
8	J. F. Hooten	"	"	May 1, 1911	D. B. X-2 P. 6	10207	
9	J. F. Hooten	"	"	Jul. 7, 1911	D. B. X-2 P. 144	10208	
10	W. S. Walker	"	"	Apr. 25, 1911	D. B. X-2 P. 26	10209	
11	Melissa Snell et al	"	"	May 2, 1911	D. B. X-2 P. 30	10210(1)	Life estate and 2/7 interest
12	L. P. Gilliam et al	"	"	Nov. 15, 1911	D. B. X-2 P. 63	10210(2)	5/7 interest
13	J. M. Crabtree	"	"	May 2, 1911	D. B. X-2 P. 51	10211	See Note No. 1
14	W. J. Sparks Co.	"	"	Feb. 1, 1915	D. B. X-2 P. 250	10561	

Notes: #1 - R.R.Co. agrees to move barn and pay grantor \$15.00 for destruction of a pond - cost to R.R.Co. to move barn \$118.00 - Cont. No. 14653

15 W. J. Sparks
16 Franklin Limestone Co.



Conf. 30882, 6-14-39 Duck River Elec. Mem. App. Power Line Sta. 2167+33.7

Sheet No. 21 of 42 of Lewisburg Division from survey station 2063+33.7 to survey station 2168+93.7

RIGHT OF WAY AND TRACK MAP
LOUISVILLE AND NASHVILLE R. R. CO.
LEWISBURG DIVISION
 STATION 2063+33.7 TO STATION 2168+93.7

SCALE: 1 INCH = 200 FT. JUNE 30 1917.

059-009

MARSHALL CO. TENN.

16-21