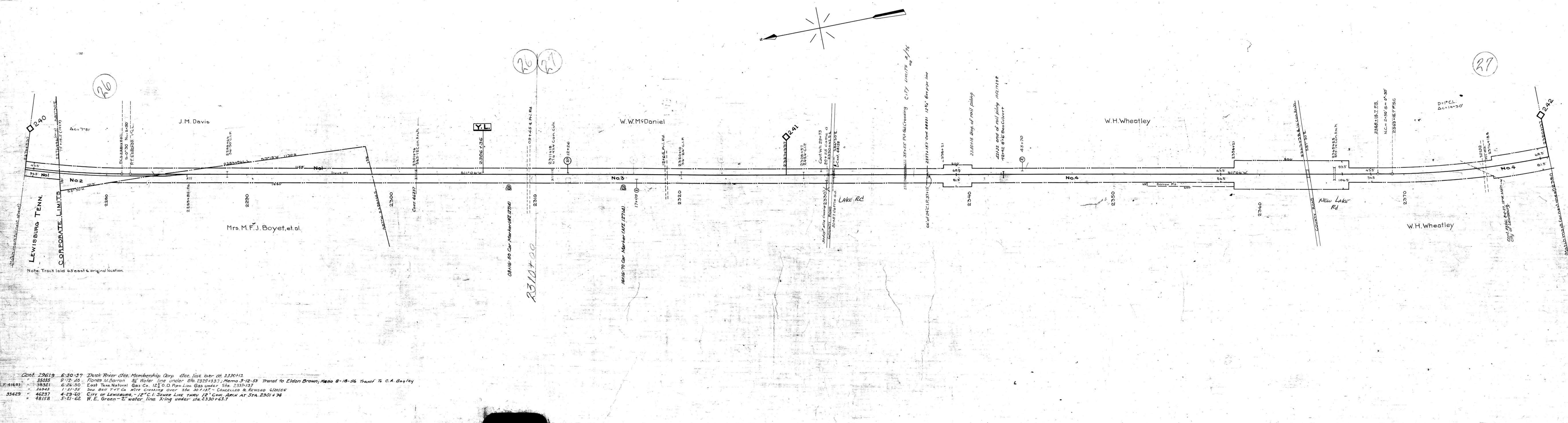


AFE No. Date Comp. Description of Change.
 12714 12-20-29 Inal. of Train Length Markers V.S. 16.
 17258 12-9-33 rail piling 216' 4016-42132

No.	Grantee	Instrument	Date	Record	Cost No.	Remarks
1	Mrs. M.F.J. Boyet, et al.	W.M.R.R.Co.	May 29, 1911	D.B.X-2 P. 100	1000011	See Note No. 1
2	Jac. Daniel	"	Apr. 26, 1911	D.B.X-2 P. 528	100390	
3	W.M. Daniel	"	Apr. 27, 1911	D.B.X-2 P. 77	100392	
4	W.H. Wheatley	"	Jul. 27, 1911	D.B.X-2 P. 252	100393	See Note No. 2

Notes:
 1 - Two acres of this tract conveyed to W.M. Daniel May 14, 1914 - cons. 1.00 - Deed No. 10289(2)
 2 - Borrow privileges from W. Wheatley - Oct. 29, 1911 - Contract No. 14636



- Cont. 22619 6-30-57 Duck River Elec. Membership Corp. Sec. line bet. st. 2230+12
 35035 9-12-16 Floods McCarron & Water line under Sta. 2229+13.7, Memo 3-12-53 Transf. to Eldon Brown, Memo 8-18-56 Transf. to C.A. Bayley
 38321 6-26-50 East Tenn. Natural Gas Co. 12" O.D. Pipe Line Gas under Sta. 2337+137
 26943 1-21-55 Sew. Bell T & T Co. Wire Crossing over Sta. 30+137 - CANCELLED & REVISED 6/20/55
 46237 4-23-60 City of Louisville - 18" C.I. Sewer Line thru 12" Con. Arch at Sta. 2301+74
 48158 5-21-62 W.E. Green - 2" water line King under Sta. 2330+63.7

Sheet No. 23 of 42 of Louisville Division from survey station 2274+03.7 to survey station 2380+13.7

RIGHT OF WAY AND TRACK MAP
 LOUISVILLE AND NASHVILLE R. R. CO.
 LEWISBURG DIVISION
 STATION 2274+53.7 TO STATION 2380+13.7
 SCALE 1 INCH=200 FT. JUNE 30 1917.

059-018

V.16
23