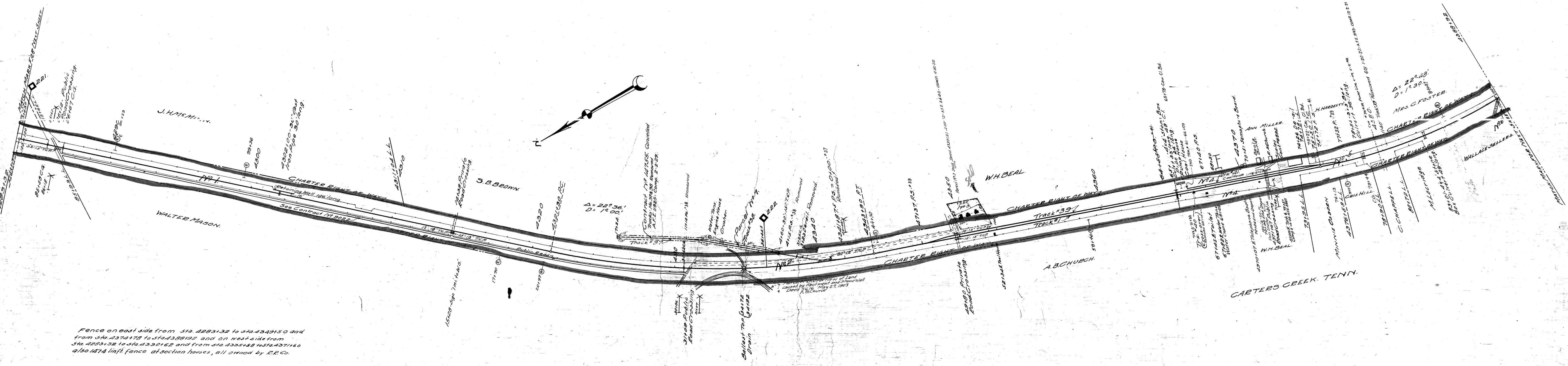


A.F.E. No	Date Comp	Desc. of Change
2440	1-20-22	Retire Pat No 3
11922	2-2-22	Removal of Track 37 & 38 for Napier Iron Works. Pat 3 Reverted
2193	12-2-21	Removal of 11461 of 4th Ave. 200
5137	6-10-25	Change of 11900 on 4th Ave. 200, & 3rd 4372+107
24169	4-30-29	Ret. of 2 Coal Houses at Carters Creek
26406	5-1-20	" " Pump 4 2nd main Tank etc.
27238	8-11-20	Check pens
42282	3-20-32	Depot replaced by 10114 Shutter Sta 4371+11
52564	2-10-61	RET. 1535 (116) TRK 441



Fence on east side from Sta. 4283+32 to Sta. 4343+150 and from Sta. 4374+78 to Sta. 4388+92 and on west side from Sta. 4283+32 to Sta. 4330+62 and from Sta. 4345+18 to Sta. 4371+60 also 1474 linft. fence at section houses, all owned by R.R. Co.

Cont. 12-20-48 Sou. Bell T.&T. Co. Wire x-ing at 165' South of Station

SHEET NO. 17 OF 22 OF NASHVILLE AND DECATUR DIVISION FROM SURVEY STATION 4283+32 TO SURVEY STATION 4388+92

VALUATION ENGINEER

RIGHT OF WAY AND TRACK MAP
 NASHVILLE AND DECATUR R. R. CO.
 OPERATED BY
 LOUISVILLE AND NASHVILLE R. R. CO.
 STATION 4283+32 TO STATION 4388+92
 SCALE 1 INCH = 200 FT. JUNE 30, 1917.

060-004

MAURY COUNTY, TENN.

OFFICE OF CHIEF ENGINEER
 LOUISVILLE, KY.

