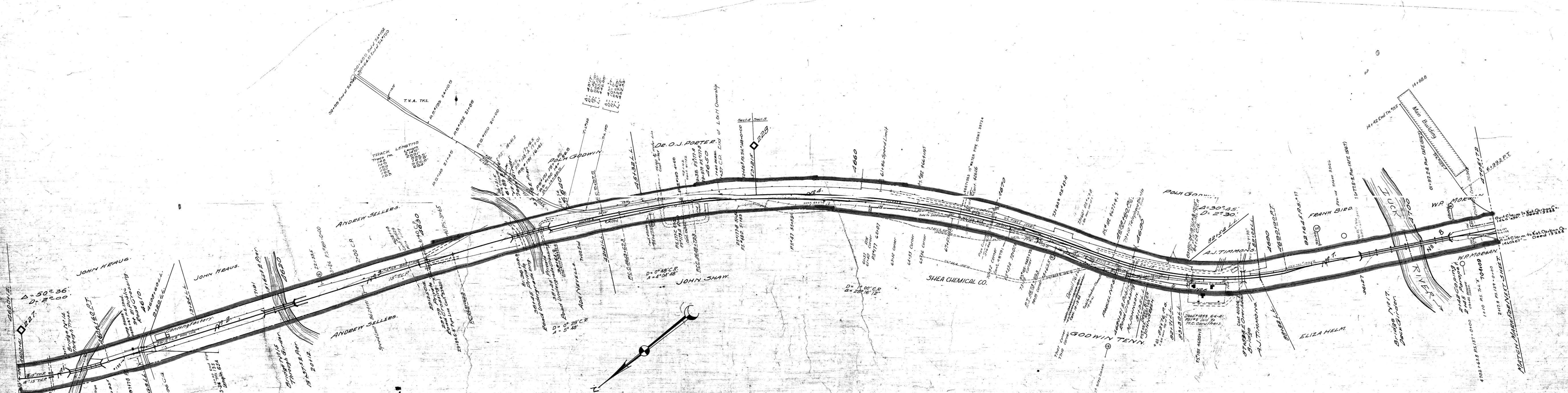


File No.	Date Comp.	Description of Change
1396	12-17-37	Br. #16 Rebuilt
20871	6-24-36	Replacement of 4 Deck Under Spans and 2 truss bents Bridge No. 17
22165	1-18-38	Alteration of ends of 2 Under Spans and 2 Abutments
27027	1-18-38	Const. of Trk. 135 PS-CR 147 C.R. Retn. sp. beyond A18'
27411	6-11-41	Const. of Trk. 137 #139
29644	4-23-42	Const. of Trk. 155
24181	8-28-38	Rel. of capst. etc.
25068	5-21-39	Stockpile
31853	4-19-46	Const. of Trk. #69
33394	5-24-45	Replace 2x8x8 OS guard rails and place galv. iron between ties Br. #14
40312	6-30-51	Const. Trks. W A B B. Ext. & shift portion of Trk. #137 for National Carbon.
42238	5-12-53	Const. Trks. #27 to #28, #28 to #29, and #29 to #30 for Shear Chemical Co.
45035	6-7-54	Const. Trk. #18 for Amstar & Co. Sta. 4664+19.5
48101	12-23-57	Const. Trk. #185



Fence on east side from Sta. 4600+12 to Sta. 4600+50
 from Sta. 4600+12 to Sta. 4600+31 from Sta. 4600+32 to Sta. 4600+50
 from Sta. 4702+14 to Sta. 4702+28 200' on 1935' side from Sta. 4600+12 to Sta. 4600+50 and from Sta. 4600+50 to Sta. 4600+12
 and from Sta. 4702+14 to Sta. 4702+28
 Fence on both sides from Sta. 4600+12 to Sta. 4600+27.

- 39558 48791 12-30-65 Hooker Chemical Corp. - Lease of 500' of Trk. #7 Sta. 4664+97 to 4671+97.
- 39559 48791 12-30-65 Hooker Chemical Corp. - Lease of 500' of Trk. #7 Sta. 4664+97 to 4671+97.
- 39560 48791 12-30-65 Hooker Chemical Corp. - Lease of 500' of Trk. #7 Sta. 4664+97 to 4671+97.
- 39561 48791 12-30-65 Hooker Chemical Corp. - Lease of 500' of Trk. #7 Sta. 4664+97 to 4671+97.
- 39562 48791 12-30-65 Hooker Chemical Corp. - Lease of 500' of Trk. #7 Sta. 4664+97 to 4671+97.
- 39563 48791 12-30-65 Hooker Chemical Corp. - Lease of 500' of Trk. #7 Sta. 4664+97 to 4671+97.
- 39564 48791 12-30-65 Hooker Chemical Corp. - Lease of 500' of Trk. #7 Sta. 4664+97 to 4671+97.
- 39565 48791 12-30-65 Hooker Chemical Corp. - Lease of 500' of Trk. #7 Sta. 4664+97 to 4671+97.
- 39566 48791 12-30-65 Hooker Chemical Corp. - Lease of 500' of Trk. #7 Sta. 4664+97 to 4671+97.
- 39567 48791 12-30-65 Hooker Chemical Corp. - Lease of 500' of Trk. #7 Sta. 4664+97 to 4671+97.
- 39568 48791 12-30-65 Hooker Chemical Corp. - Lease of 500' of Trk. #7 Sta. 4664+97 to 4671+97.
- 39569 48791 12-30-65 Hooker Chemical Corp. - Lease of 500' of Trk. #7 Sta. 4664+97 to 4671+97.
- 39570 48791 12-30-65 Hooker Chemical Corp. - Lease of 500' of Trk. #7 Sta. 4664+97 to 4671+97.
- 39571 48791 12-30-65 Hooker Chemical Corp. - Lease of 500' of Trk. #7 Sta. 4664+97 to 4671+97.
- 39572 48791 12-30-65 Hooker Chemical Corp. - Lease of 500' of Trk. #7 Sta. 4664+97 to 4671+97.
- 39573 48791 12-30-65 Hooker Chemical Corp. - Lease of 500' of Trk. #7 Sta. 4664+97 to 4671+97.
- 39574 48791 12-30-65 Hooker Chemical Corp. - Lease of 500' of Trk. #7 Sta. 4664+97 to 4671+97.
- 39575 48791 12-30-65 Hooker Chemical Corp. - Lease of 500' of Trk. #7 Sta. 4664+97 to 4671+97.
- 39576 48791 12-30-65 Hooker Chemical Corp. - Lease of 500' of Trk. #7 Sta. 4664+97 to 4671+97.
- 39577 48791 12-30-65 Hooker Chemical Corp. - Lease of 500' of Trk. #7 Sta. 4664+97 to 4671+97.
- 39578 48791 12-30-65 Hooker Chemical Corp. - Lease of 500' of Trk. #7 Sta. 4664+97 to 4671+97.
- 39579 48791 12-30-65 Hooker Chemical Corp. - Lease of 500' of Trk. #7 Sta. 4664+97 to 4671+97.
- 39580 48791 12-30-65 Hooker Chemical Corp. - Lease of 500' of Trk. #7 Sta. 4664+97 to 4671+97.
- 39581 48791 12-30-65 Hooker Chemical Corp. - Lease of 500' of Trk. #7 Sta. 4664+97 to 4671+97.
- 39582 48791 12-30-65 Hooker Chemical Corp. - Lease of 500' of Trk. #7 Sta. 4664+97 to 4671+97.
- 39583 48791 12-30-65 Hooker Chemical Corp. - Lease of 500' of Trk. #7 Sta. 4664+97 to 4671+97.
- 39584 48791 12-30-65 Hooker Chemical Corp. - Lease of 500' of Trk. #7 Sta. 4664+97 to 4671+97.
- 39585 48791 12-30-65 Hooker Chemical Corp. - Lease of 500' of Trk. #7 Sta. 4664+97 to 4671+97.
- 39586 48791 12-30-65 Hooker Chemical Corp. - Lease of 500' of Trk. #7 Sta. 4664+97 to 4671+97.
- 39587 48791 12-30-65 Hooker Chemical Corp. - Lease of 500' of Trk. #7 Sta. 4664+97 to 4671+97.
- 39588 48791 12-30-65 Hooker Chemical Corp. - Lease of 500' of Trk. #7 Sta. 4664+97 to 4671+97.
- 39589 48791 12-30-65 Hooker Chemical Corp. - Lease of 500' of Trk. #7 Sta. 4664+97 to 4671+97.
- 39590 48791 12-30-65 Hooker Chemical Corp. - Lease of 500' of Trk. #7 Sta. 4664+97 to 4671+97.
- 39591 48791 12-30-65 Hooker Chemical Corp. - Lease of 500' of Trk. #7 Sta. 4664+97 to 4671+97.
- 39592 48791 12-30-65 Hooker Chemical Corp. - Lease of 500' of Trk. #7 Sta. 4664+97 to 4671+97.
- 39593 48791 12-30-65 Hooker Chemical Corp. - Lease of 500' of Trk. #7 Sta. 4664+97 to 4671+97.
- 39594 48791 12-30-65 Hooker Chemical Corp. - Lease of 500' of Trk. #7 Sta. 4664+97 to 4671+97.
- 39595 48791 12-30-65 Hooker Chemical Corp. - Lease of 500' of Trk. #7 Sta. 4664+97 to 4671+97.
- 39596 48791 12-30-65 Hooker Chemical Corp. - Lease of 500' of Trk. #7 Sta. 4664+97 to 4671+97.
- 39597 48791 12-30-65 Hooker Chemical Corp. - Lease of 500' of Trk. #7 Sta. 4664+97 to 4671+97.
- 39598 48791 12-30-65 Hooker Chemical Corp. - Lease of 500' of Trk. #7 Sta. 4664+97 to 4671+97.
- 39599 48791 12-30-65 Hooker Chemical Corp. - Lease of 500' of Trk. #7 Sta. 4664+97 to 4671+97.
- 39600 48791 12-30-65 Hooker Chemical Corp. - Lease of 500' of Trk. #7 Sta. 4664+97 to 4671+97.

RIGHT OF WAY AND TRACK MAP
 NASHVILLE AND DECATUR R. R. CO.
 OPERATED BY
 LOUISVILLE AND NASHVILLE R. R. CO.
 STATION 4600+12 TO STATION 4705+72
 SCALE: 1" = 200 FT. JUNE 30, 1917

660-007