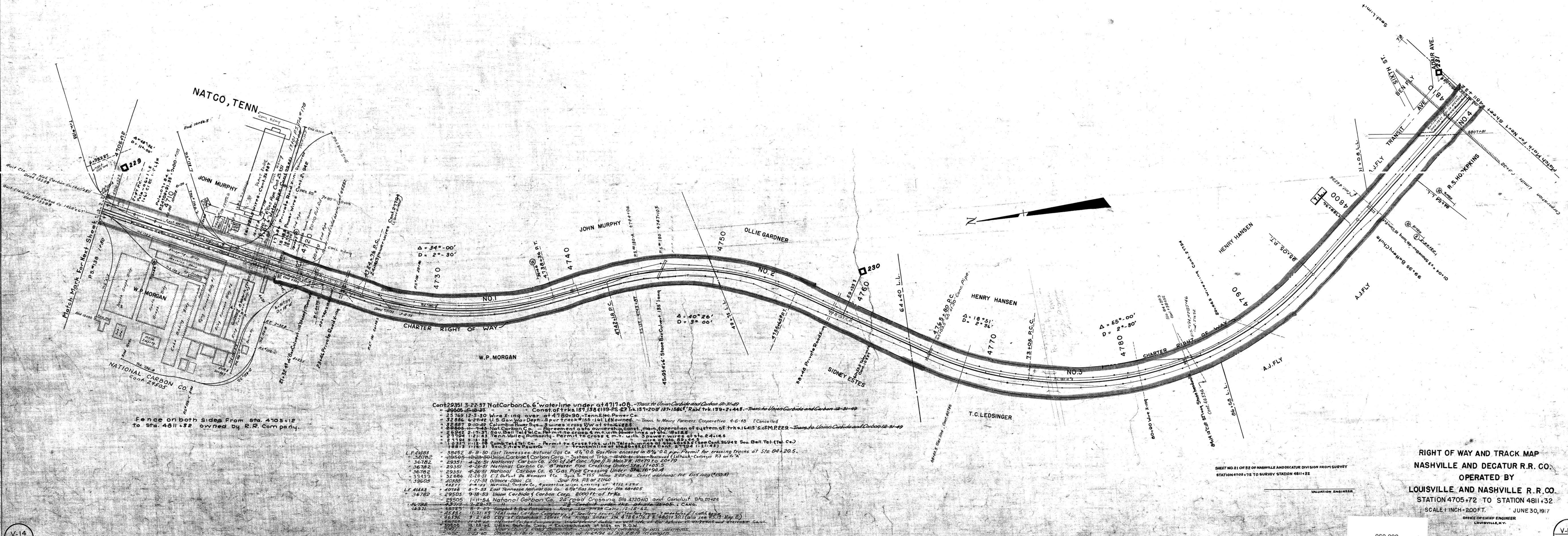


A.F.E.	DATE	DESCRIPTION OF CHANGE
22165	1-18-38	Const of trk. #137, 138, 139, P.S. C.P. #137+200' R.O.W. #139+2+44'
26444	5-3-42	Inst. turnout for trk. #155-161 owned by L&N.
29512	8-14-42	Trk. #151 shifted 4' ext. 431' New P.S. 23+371 Const. of trk. 166 at P.S. #74. Const. trk. #156-4
34017	1-17-46	Inst. 60' of 30" conc. pipe at Sta. 4765+93.5'
40300	12-20-50	Rel. of O.H. Bridge
40243	6-30-50	Rel. of P.S. #2
40312	6-30-51	Const. Trk. #137 & 138. Ext. shifting portion of Trk. #137 for National Carbon.
43544	2-20-53	Const. Trk. #178 for National Carbon Co.
44186	10-6-53	Const. Trk. #178 for National Carbon Co.
43665	9-21-53	Const. Trks. #180 and #181 for National Carbon Co.
48141	11-24-54	Extend Trk. #137 2000' to Sta. 4743+87
54722	12-4-63	Const. Trk. #180A
58764	3-31-66	Construction Trk. #184



Cont. 29351 3-22-37 NatCarbon Co. 6" waterline under at 4711+08. -Trans to Union Carbide and Carbon 12-31-49  
 29965 5-10-38 Const. of trks. 137, 138, 139 P.S. C.P. #137+200' R.O.W. #139+2+44' -Trans to Union Carbide and Carbon 12-31-49  
 32789 12-5-50 Wire X-ing over at 4780+90 -Tennessee Power Co.  
 32886 6-27-42 U.S. Gov. War Dept. -Spur track #155-161 L&N owned. -Trans. to Mary Farmers Cooperative 4-6-48 (Cancelled)  
 32887 9-10-49 Columbia River Sys. -3 wires cross RW at sta. 4782+88  
 36605 11-1-43 Nat. Carbon Co. -Agreement on ownership Const. main operation of system of trks. 1415's of MP 229 -Trans. to Union Carbide and Carbon 12-31-49  
 36942 2-17-31 So. Bell Tel. Co. -Permit to cross 4 m. with power lines of sta. 18+18.5  
 37104 1-21-43 Tenn. Valley Ry. -Permit to cross 4 m. with 3 power wires of sta. 24+14.8  
 21194 9-13-38 So. Bell Tel. Co. -Permit to cross trks. with 3 power wires of sta. 28+45.5  
 18813 1-18-31 So. Cities Power Co. -Transmission line at sta. 68+85 (See Cont. 27794 1-21-43)  
 39452 8-9-50 East Tennessee Natural Gas Co. 4" O.D. Gas Main encased in 8" O.D. pipe. Permit for crossing tracks at Sta. 68+20.5  
 40743 8-7-51 East Tennessee Natural Gas Co. 6" Gas line under Sta. 68+40.5  
 29351 4-26-51 National Carbon Co. 200' of 24" Conc. Pipe // to Main Trk. 18+79 to 20+75  
 29351 4-26-51 National Carbon Co. 8" Water Pipe Crossing Under Sta. 17+05.5  
 29351 4-26-51 National Carbon Co. 6" Gas Pipe Crossing Under Sta. 16+90.4  
 33403 12-20-51 C.T. De Haven & Co. -Spur to 155' Main 359+56 Const. additional Trk. 215 long (4155-A)  
 39603 1-27-53 Gilmore-Olson Co. -Spur Trk. R3 at 2260  
 40877 2-4-53 Marconi Carbon Co. 4" power line with crossing at 4712+27.6  
 40743 8-7-51 East Tennessee Natural Gas Co. 6" Gas line under Sta. 68+40.5  
 29505 9-18-53 Union Carbide & Carbon Corp. 8000' of Trks.  
 29505 1-11-54 National Carbon Co. 28' road crossing Sta. 4720+10 and Conduit Sta. 20+25  
 44782 8-29-51 -Construction under 748' -at Sta. 36+05.5 & 36+06.5  
 45245 6-7-53 Campbell & Co. -Construction of Trk. #178 -at Sta. 18+62  
 45882 11-21-53 National Carbon Company -Construction of 15' x 15' x 15' concrete pile caps at Sta. 4743+87  
 46196 8-27-60 City of Louisville Sewer Line -Crossing under Trk. 4734+16.7 & 4801+30.1 (also see 5516 May 2)  
 46196 11-21-53 National Carbon Company -Construction of 15' x 15' x 15' concrete pile caps at Sta. 4743+87  
 50650 12-20-62 Union Carbide Corp. Encroachment of bldg. on R.O.W.  
 51652 11-23-65 Charles E. Price -Construction of Trk. #184 at 913 26' ft. length

RIGHT OF WAY AND TRACK MAP  
 NASHVILLE AND DECATUR R.R. CO.  
 OPERATED BY  
 LOUISVILLE AND NASHVILLE R.R. CO.  
 STATION 4705+72 TO STATION 4811+32  
 SCALE 1 INCH=200 FT. JUNE 30, 1917  
 OFFICE OF CHIEF ENGINEER  
 LOUISVILLE, KY.

VALUATION ENGINEER

060-008

V-14  
21

MAURY COUNTY, TENN.

V-14  
21