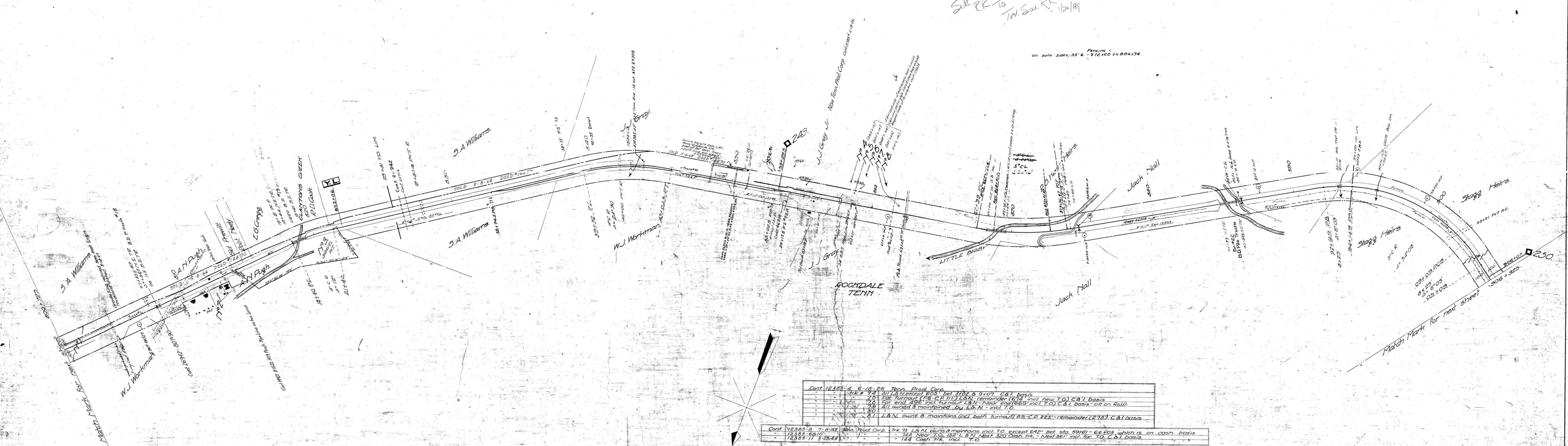


A.F.E. No.	Date Comp.	Description of Change.
12177	2-2-22	Relaying Port of TK*72 and TK*73 with 60' rail
2165	2-2-22	Relaying Port of TK*72 and TK*73 with 60' rail
15253	8-31-31	Constr of TK 72A-C.G.I. Sewer- HB at 21956 in TK 72
19583	9-30-36	Sold par 2
28171	4-18-41	Constr of TK 139 MS from PS to CIP. Sh. HB on TK*78
28924	9-25-41	Ret. TK 73 ps moved N. from 4317-38+35
29308	4-2	Form of TK 139
31294	8-43	Cont. N.T.O. to TK 74
31488	8-31-43	PS. in HB moved back from Sta. 17+07 to 16+62
34100	7-29-43	Inst. service from Sta. 39+34.5
35078	9-26-44	Constr spur TK 142 - Tenn. Prods. Corp. L. TK 73 at 847+08.5 (300' long)
40108	12-29-50	Ret. trks * 74-A, 144, 74, 78, 76-A, 75, 80, 79, 81, 138, Tenn. Products & Chemical Corp.
40553	7-51	Rebuild Br #22
41185	7-11-51	Ret. main cross, sig. & mast. 35+574
49017	7-31-57	Ret. Trk #73 & Depot
45734	4-26-54	RET. 3174' 5" Pipe (in place), 50,000 GAL. WATER TANK
45733	4-26-54	RET. 66,000 GAL. TANK, CHEMICAL. VAT & HOUSE, ELEC. MOTOR & PUMP

Date	By	Checked	Approved
Oct. 20, 1929	J. H. ...	J. H. ...	J. H. ...
Nov. 1, 1929	J. H. ...	J. H. ...	J. H. ...
Nov. 1, 1929	J. H. ...	J. H. ...	J. H. ...
Nov. 1, 1929	J. H. ...	J. H. ...	J. H. ...
Nov. 1, 1929	J. H. ...	J. H. ...	J. H. ...



Cont.	Date	Description
12383-4	6-18-26	Tenn. Prod. Corp. Trk # 74 All L&N except 605' bet 3102 & 3107 C&I basis
12383-5	7-1	Ret. turnout PS-C.P. 1113 L&N remainder (617' incl. new T.O.) C&I basis
12383-6	7-1	Ret. end 438' incl turnout PS-C.P. 1113 L&N next end (660' incl. T.O.) C&I basis - all on Roll
12383-7	3-25-43	All owned & maintained by L&N - incl. T.O.
12383-8	7-1-26	L&N owns & maintains (incl. both turnout) PS-C.P. 225 - remainder (278') C&I basis
12383-9	7-1-26	Trk 73 L&N owns & maintains incl. T.O. except 642' bet sta. 59161 - 66+03 which is on cash basis
12383-10	7-1-26	741 Near T.O. 132' L & N NEXT 320' C&I trk - Next 361' incl. for T.O. C&I basis
12383-11	3-25-43	144 Cash trk incl. T.O.

Cont.	Date	Description
12399	10-17-38	City of Mt. Pleasant water line on Roll, M.P. 248-253 Crossing under on miles 251 & 253
12399-1	10-17-38	City of Mt. Pleasant water line on Roll, M.P. 248-253 Crossing under on miles 251 & 253
12399-2	10-17-38	City of Mt. Pleasant water line on Roll, M.P. 248-253 Crossing under on miles 251 & 253
12399-3	10-17-38	City of Mt. Pleasant water line on Roll, M.P. 248-253 Crossing under on miles 251 & 253
12399-4	10-17-38	City of Mt. Pleasant water line on Roll, M.P. 248-253 Crossing under on miles 251 & 253
12399-5	10-17-38	City of Mt. Pleasant water line on Roll, M.P. 248-253 Crossing under on miles 251 & 253
12399-6	10-17-38	City of Mt. Pleasant water line on Roll, M.P. 248-253 Crossing under on miles 251 & 253
12399-7	10-17-38	City of Mt. Pleasant water line on Roll, M.P. 248-253 Crossing under on miles 251 & 253
12399-8	10-17-38	City of Mt. Pleasant water line on Roll, M.P. 248-253 Crossing under on miles 251 & 253
12399-9	10-17-38	City of Mt. Pleasant water line on Roll, M.P. 248-253 Crossing under on miles 251 & 253
12399-10	10-17-38	City of Mt. Pleasant water line on Roll, M.P. 248-253 Crossing under on miles 251 & 253
12399-11	10-17-38	City of Mt. Pleasant water line on Roll, M.P. 248-253 Crossing under on miles 251 & 253
12399-12	10-17-38	City of Mt. Pleasant water line on Roll, M.P. 248-253 Crossing under on miles 251 & 253
12399-13	10-17-38	City of Mt. Pleasant water line on Roll, M.P. 248-253 Crossing under on miles 251 & 253
12399-14	10-17-38	City of Mt. Pleasant water line on Roll, M.P. 248-253 Crossing under on miles 251 & 253
12399-15	10-17-38	City of Mt. Pleasant water line on Roll, M.P. 248-253 Crossing under on miles 251 & 253
12399-16	10-17-38	City of Mt. Pleasant water line on Roll, M.P. 248-253 Crossing under on miles 251 & 253
12399-17	10-17-38	City of Mt. Pleasant water line on Roll, M.P. 248-253 Crossing under on miles 251 & 253
12399-18	10-17-38	City of Mt. Pleasant water line on Roll, M.P. 248-253 Crossing under on miles 251 & 253
12399-19	10-17-38	City of Mt. Pleasant water line on Roll, M.P. 248-253 Crossing under on miles 251 & 253
12399-20	10-17-38	City of Mt. Pleasant water line on Roll, M.P. 248-253 Crossing under on miles 251 & 253
12399-21	10-17-38	City of Mt. Pleasant water line on Roll, M.P. 248-253 Crossing under on miles 251 & 253
12399-22	10-17-38	City of Mt. Pleasant water line on Roll, M.P. 248-253 Crossing under on miles 251 & 253
12399-23	10-17-38	City of Mt. Pleasant water line on Roll, M.P. 248-253 Crossing under on miles 251 & 253
12399-24	10-17-38	City of Mt. Pleasant water line on Roll, M.P. 248-253 Crossing under on miles 251 & 253
12399-25	10-17-38	City of Mt. Pleasant water line on Roll, M.P. 248-253 Crossing under on miles 251 & 253
12399-26	10-17-38	City of Mt. Pleasant water line on Roll, M.P. 248-253 Crossing under on miles 251 & 253
12399-27	10-17-38	City of Mt. Pleasant water line on Roll, M.P. 248-253 Crossing under on miles 251 & 253
12399-28	10-17-38	City of Mt. Pleasant water line on Roll, M.P. 248-253 Crossing under on miles 251 & 253
12399-29	10-17-38	City of Mt. Pleasant water line on Roll, M.P. 248-253 Crossing under on miles 251 & 253
12399-30	10-17-38	City of Mt. Pleasant water line on Roll, M.P. 248-253 Crossing under on miles 251 & 253
12399-31	10-17-38	City of Mt. Pleasant water line on Roll, M.P. 248-253 Crossing under on miles 251 & 253
12399-32	10-17-38	City of Mt. Pleasant water line on Roll, M.P. 248-253 Crossing under on miles 251 & 253
12399-33	10-17-38	City of Mt. Pleasant water line on Roll, M.P. 248-253 Crossing under on miles 251 & 253
12399-34	10-17-38	City of Mt. Pleasant water line on Roll, M.P. 248-253 Crossing under on miles 251 & 253
12399-35	10-17-38	City of Mt. Pleasant water line on Roll, M.P. 248-253 Crossing under on miles 251 & 253
12399-36	10-17-38	City of Mt. Pleasant water line on Roll, M.P. 248-253 Crossing under on miles 251 & 253
12399-37	10-17-38	City of Mt. Pleasant water line on Roll, M.P. 248-253 Crossing under on miles 251 & 253
12399-38	10-17-38	City of Mt. Pleasant water line on Roll, M.P. 248-253 Crossing under on miles 251 & 253
12399-39	10-17-38	City of Mt. Pleasant water line on Roll, M.P. 248-253 Crossing under on miles 251 & 253
12399-40	10-17-38	City of Mt. Pleasant water line on Roll, M.P. 248-253 Crossing under on miles 251 & 253
12399-41	10-17-38	City of Mt. Pleasant water line on Roll, M.P. 248-253 Crossing under on miles 251 & 253
12399-42	10-17-38	City of Mt. Pleasant water line on Roll, M.P. 248-253 Crossing under on miles 251 & 253
12399-43	10-17-38	City of Mt. Pleasant water line on Roll, M.P. 248-253 Crossing under on miles 251 & 253
12399-44	10-17-38	City of Mt. Pleasant water line on Roll, M.P. 248-253 Crossing under on miles 251 & 253
12399-45	10-17-38	City of Mt. Pleasant water line on Roll, M.P. 248-253 Crossing under on miles 251 & 253
12399-46	10-17-38	City of Mt. Pleasant water line on Roll, M.P. 248-253 Crossing under on miles 251 & 253
12399-47	10-17-38	City of Mt. Pleasant water line on Roll, M.P. 248-253 Crossing under on miles 251 & 253
12399-48	10-17-38	City of Mt. Pleasant water line on Roll, M.P. 248-253 Crossing under on miles 251 & 253
12399-49	10-17-38	City of Mt. Pleasant water line on Roll, M.P. 248-253 Crossing under on miles 251 & 253
12399-50	10-17-38	City of Mt. Pleasant water line on Roll, M.P. 248-253 Crossing under on miles 251 & 253
12399-51	10-17-38	City of Mt. Pleasant water line on Roll, M.P. 248-253 Crossing under on miles 251 & 253
12399-52	10-17-38	City of Mt. Pleasant water line on Roll, M.P. 248-253 Crossing under on miles 251 & 253
12399-53	10-17-38	City of Mt. Pleasant water line on Roll, M.P. 248-253 Crossing under on miles 251 & 253
12399-54	10-17-38	City of Mt. Pleasant water line on Roll, M.P. 248-253 Crossing under on miles 251 & 253
12399-55	10-17-38	City of Mt. Pleasant water line on Roll, M.P. 248-253 Crossing under on miles 251 & 253
12399-56	10-17-38	City of Mt. Pleasant water line on Roll, M.P. 248-253 Crossing under on miles 251 & 253
12399-57	10-17-38	City of Mt. Pleasant water line on Roll, M.P. 248-253 Crossing under on miles 251 & 253
12399-58	10-17-38	City of Mt. Pleasant water line on Roll, M.P. 248-253 Crossing under on miles 251 & 253
12399-59	10-17-38	City of Mt. Pleasant water line on Roll, M.P. 248-253 Crossing under on miles 251 & 253
12399-60	10-17-38	City of Mt. Pleasant water line on Roll, M.P. 248-253 Crossing under on miles 251 & 253
12399-61	10-17-38	City of Mt. Pleasant water line on Roll, M.P. 248-253 Crossing under on miles 251 & 253
12399-62	10-17-38	City of Mt. Pleasant water line on Roll, M.P. 248-253 Crossing under on miles 251 & 253
12399-63	10-17-38	City of Mt. Pleasant water line on Roll, M.P. 248-253 Crossing under on miles 251 & 253
12399-64	10-17-38	City of Mt. Pleasant water line on Roll, M.P. 248-253 Crossing under on miles 251 & 253
12399-65	10-17-38	City of Mt. Pleasant water line on Roll, M.P. 248-253 Crossing under on miles 251 & 253
12399-66	10-17-38	City of Mt. Pleasant water line on Roll, M.P. 248-253 Crossing under on miles 251 & 253
12399-67	10-17-38	City of Mt. Pleasant water line on Roll, M.P. 248-253 Crossing under on miles 251 & 253
12399-68	10-17-38	City of Mt. Pleasant water line on Roll, M.P. 248-253 Crossing under on miles 251 & 253
12399-69	10-17-38	City of Mt. Pleasant water line on Roll, M.P. 248-253 Crossing under on miles 251 & 253
12399-70	10-17-38	City of Mt. Pleasant water line on Roll, M.P. 248-253 Crossing under on miles 251 & 253
12399-71	10-17-38	City of Mt. Pleasant water line on Roll, M.P. 248-253 Crossing under on miles 251 & 253
12399-72	10-17-38	City of Mt. Pleasant water line on Roll, M.P. 248-253 Crossing under on miles 251 & 253
12399-73	10-17-38	City of Mt. Pleasant water line on Roll, M.P. 248-253 Crossing under on miles 251 & 253
12399-74	10-17-38	City of Mt. Pleasant water line on Roll, M.P. 248-253 Crossing under on miles 251 & 253
12399-75	10-17-38	City of Mt. Pleasant water line on Roll, M.P. 248-253 Crossing under on miles 251 & 253
12399-76	10-17-38	City of Mt. Pleasant water line on Roll, M.P. 248-253 Crossing under on miles 251 & 253
12399-77	10-17-38	City of Mt. Pleasant water line on Roll, M.P. 248-253 Crossing under on miles 251 & 253
12399-78	10-17-38	City of Mt. Pleasant water line on Roll, M.P. 248-253 Crossing under on miles 251 & 253
12399-79	10-17-38	City of Mt. Pleasant water line on Roll, M.P. 248-253 Crossing under on miles 251 & 253
12399-80	10-17-38	City of Mt. Pleasant water line on Roll, M.P. 248-253 Crossing under on miles 251 & 253
12399-81	10-17-38	City of Mt. Pleasant water line on Roll, M.P. 248-253 Crossing under on miles 251 & 253
12399-82	10-17-38	City of Mt. Pleasant water line on Roll, M.P. 248-253 Crossing under on miles 251 & 253
12399-83	10-17-38	City of Mt. Pleasant water line on Roll, M.P. 248-253 Crossing under on miles 251 & 253
12399-84	10-17-38	City of Mt. Pleasant water line on Roll, M.P. 248-253 Crossing under on miles 251 & 253
12399-85	10-17-38	City of Mt. Pleasant water line on Roll, M.P. 248-253 Crossing under on miles 251 & 253
12399-86	10-17-38	City of Mt. Pleasant water line on Roll, M.P. 248-253 Crossing under on miles 251 & 253
12399-87	10-17-38	City of Mt. Pleasant water line on Roll, M.P. 248-253 Crossing under on miles 251 & 253
12399-88	10-17-38	City of Mt. Pleasant water line on Roll, M.P. 248-253 Crossing under on miles 251 & 253
12399-89	10-17-38	City of Mt. Pleasant water line on Roll, M.P. 248-253 Crossing under on miles 251 & 253
12399-90	10-17-38	City of Mt. Pleasant water line on Roll, M.P. 248-253 Crossing under on miles 251 & 253
12399-91	10-17-38	City of Mt. Pleasant water line on Roll, M.P. 248-253 Crossing under on miles 251 & 253
12399-92	10-17-38	City of Mt. Pleasant water line on Roll, M.P. 248-253 Crossing under on miles 251 & 253
12399-93	10-17-38	City of Mt. Pleasant water line on Roll, M.P. 248-253 Crossing under on miles 251 & 253
12399-94	10-17-38	City of Mt. Pleasant water line on Roll, M.P. 248-253 Crossing under on miles 251 & 253
12399-95	10-17-38	City of Mt. Pleasant water line on Roll, M.P. 248-253 Crossing under on miles 251 & 253
12399-96	10-17-38	City of Mt. Pleasant water line on Roll, M.P. 248-253 Crossing under on miles 251 & 253
12399-97	10-17-38	City of Mt. Pleasant water line on Roll, M.P. 248-253 Crossing under on miles 251 & 253
12399-98	10-17-38	City of Mt. Pleasant water line on Roll, M.P. 248-253 Crossing under on miles 251 & 253
12399-99	10-17-38	City of Mt. Pleasant water line on Roll, M.P. 248-253 Crossing under on miles 251 & 253
12399-100	10-17-38	City of Mt. Pleasant water line on Roll, M.P. 248-253 Crossing under on miles 251 & 253

RIGHT OF WAY AND TRACK MAP
 LOUISVILLE AND NASHVILLE R. R. CO.
 NASHVILLE, FLORENCE AND SHEFFIELD DIVISION
 STATION 800+72.5 TO STATION 906+32.5
 SCALE 1 INCH = 300 FT.
 JUNE 30 1917.

MAURY CO., TENN.

060-034

1917