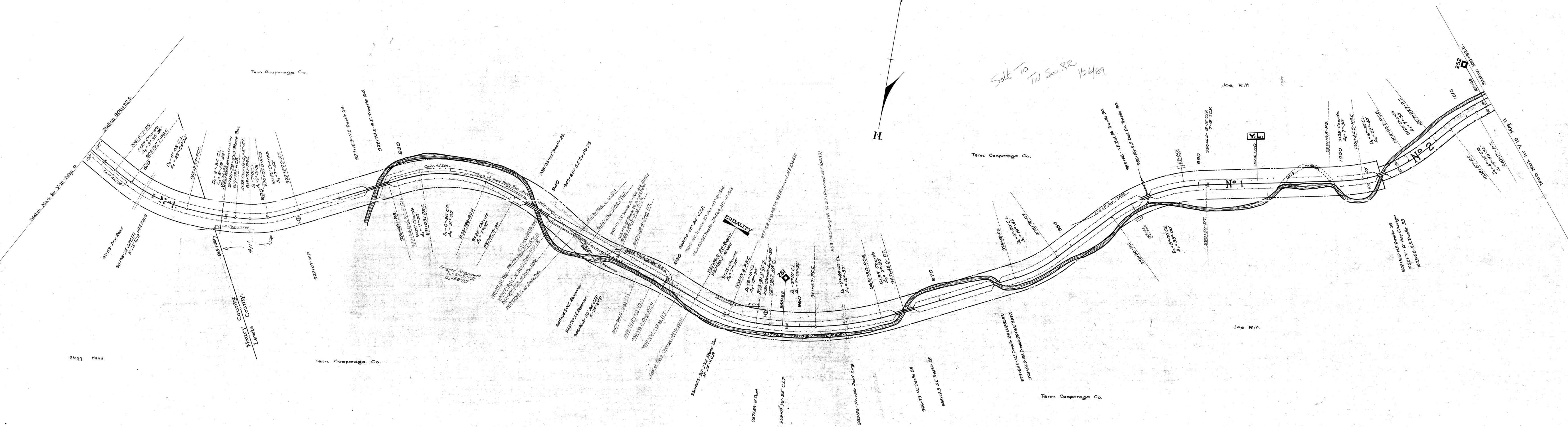


AFE No.	Date Comp.	Description of Change
D-1514	11-25-17	Revision in Alignment of Main Tr. (Includes rel of Trestles 26 and 27)
3019	7-17-22	Inst. of 24-25 and 5-24 T.C.P. at Sta. 911+78
5337	12-8-24	Reconstructing Trestle 29 with 60' Bal. Deck (Cree)
10229	3-23-26	Removal of Track 402
16673	3-8-30	Inst. of Trestle 26 between Sta. 911+78 to 911+84
40854	10-30-51	Rel. Br. #31 Sta. 995+48 to 996+21 & Br. #32 Sta. 998+84 to 999+45.5 B Channel change between Sta. 995+84 to 999+32
49630	-50	Rebuild Br. #30
45194	4-26-54	Rel. 3174' of 6" Water Line (in Place) Sta. 834+02 to 945+76

No.	Grantor	Grantee	Instrument	Date	Record	Cost No.	Area	AFE	Remarks
1	No deed covering	Charles Wirth	Claimed						
2	Nancy J. Wood et al.	N.T.S. R.R. Co.	Court Order	Oct. 1885			59		No record shown.



Cont. 13599 10-17-38 City of Mt. Pleasant Water line on R/W bet P.P. 240 & 253 crossing under on miles 257 & 253
 L.F. 41483 " 30455 8-4-50 East Tennessee Natural Gas Co. 6" O.D. Pipe Line (Gas) crossing R/W at Sta. 916+82.
 4454 46208 2-1-60 City of Mt. Pleasant - Sale of 9174'-E" Water Line (in Place) Sta. 834+02 to 945+76

RIGHT OF WAY AND TRACK MAP
 LOUISVILLE AND NASHVILLE R. R. CO.
 NASHVILLE FLORENCE AND SHEFFIELD DIVISION
 STATION 906+32.5 TO STATION 1011+92.5

SCALE 1 INCH = 200 FT. JUNE 30 1917.
 OFFICE OF CHIEF ENGINEER
 LOUISVILLE, KY.

VALUATION ENGINEER