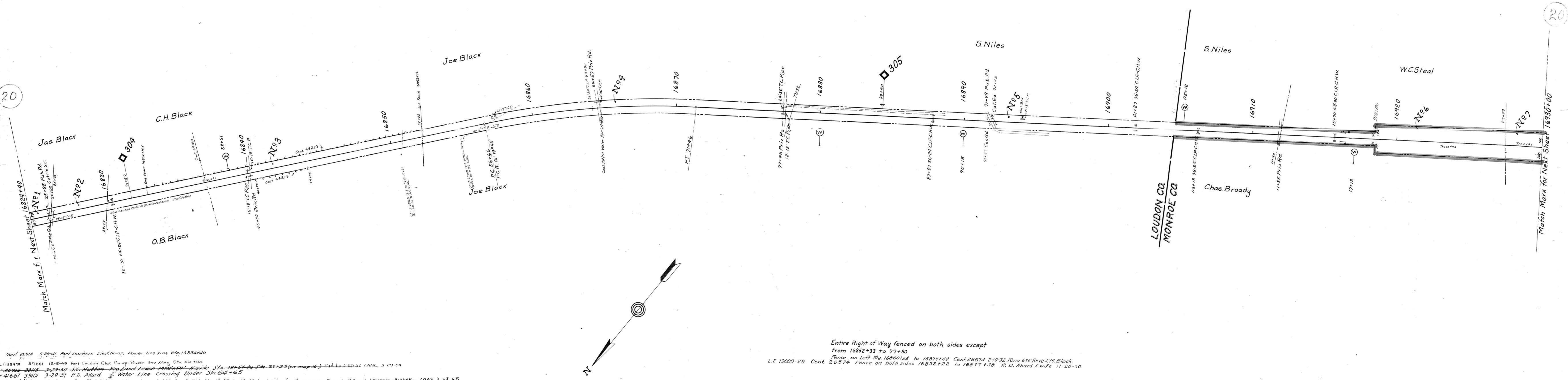


20

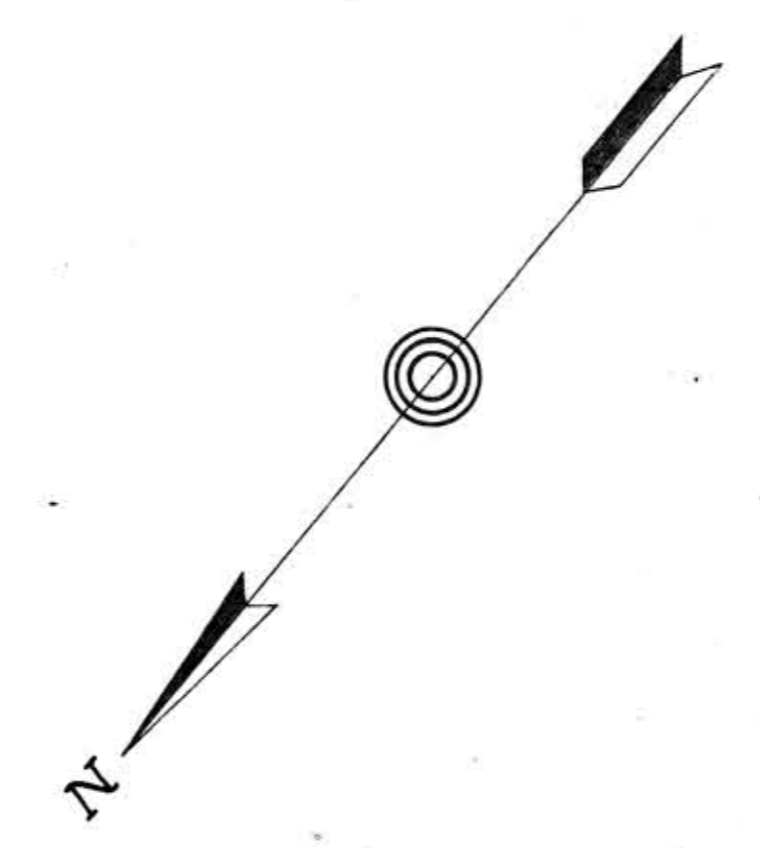
Cont. 32314 5-29-41 Port Loudoun Elec. Gen. Power Line Xing Sta. 16884+00
 L.F. 35479 37881 12-5-49 Fort Loudon Elec. Co-op Power Line Xing Sta. 34+80
 40766 38115 3-29-50 J.C. Hutton Pro Land Lease 1472+00 N. Side Sta. 18+52 to Sta. 23+22 (on map 16)
 41667 39101 3-29-51 R.D. Akard Water Line Crossing Under Sta. 64+65
 42103 3-29-51 Three 500000 Volt Station Lines of 1699 ft. of Sta. 18+52 to Sta. 23+22 on both sides for 500000 Volt Station Lines to Billy L. Hesterman 41-68 - CANC 3-28-65
 44219 2-17-58 Eugene Black Partnership Fence Sta. 32175 to 52124 South Side 40124 to 44104 North
 1900-29 46904 8-19-60 Ames M. Shufeldt Fence - needs at Sta. 16829175 to 16830141

29-15

LOUDON CO. TENN.



Entire Right of Way fenced on both sides except
 from 16852+33 to 77+80
 Fence on Left Sta. 16860+24 to 16877+40 Cont. 26574 2-10-32 Form 635 Rev'd J.M. Black.
 L.F. 19000-29 Cont. 26374 Fence on both sides 16852+22 to 16877+38 R. D. Akard & wife 11-20-50



RIGHT OF WAY AND TRACK MAP
 LOUISVILLE AND NASHVILLE R. R. CO.
 KNOXVILLE DIVISION
 STATION 16824+40 TO STATION 16930+00

SCALE: 1 INCH = 200 FT. JUNE 30 1917.
 OFFICE OF CHIEF ENGINEER, LOUISVILLE, KY.

SHEET NO. 15 OF 71 OF KNOXVILLE DIVISION FROM SURVEY
 STATION 16824+40 TO SURVEY STATION 16930+00.
 S. Williams
 SURVEYOR
 MONROE CO. TENN.
 062-008

20

V-29
 15

11-1