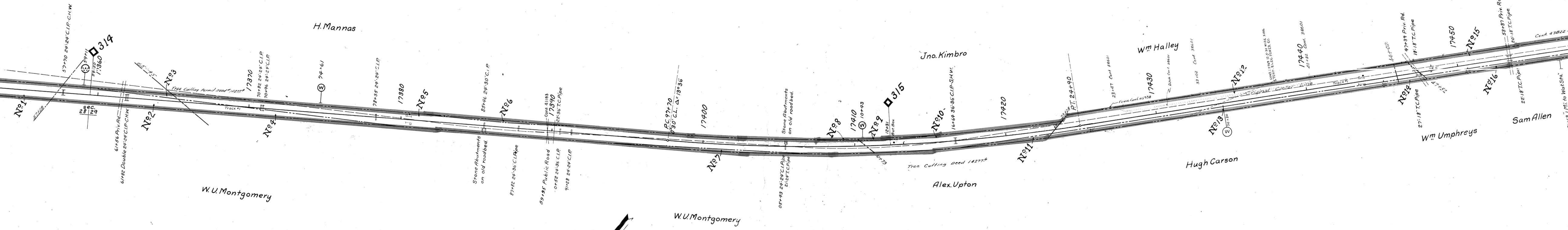
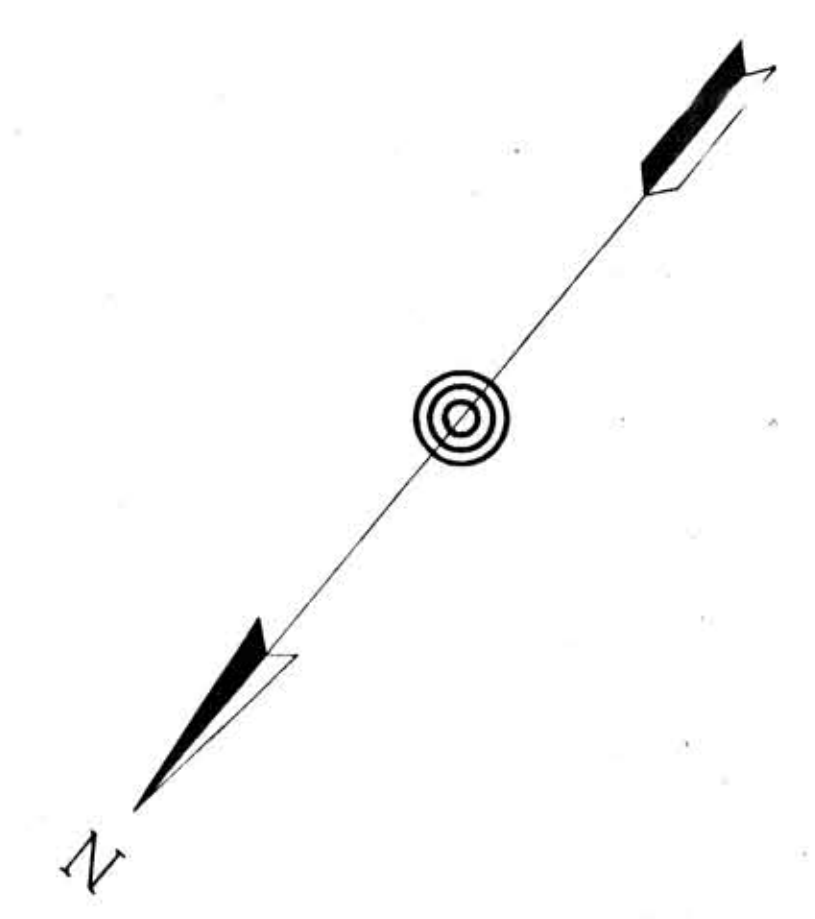


28

Match Mark for Next Sheet 17352+40

L.F. 40800 Cont # 38601 5-29-50 W.T. Smith open drainage ditch and 2.5" tile drains on S.R.W. Stas 17427+47, 17433+02, 17440+32. (transferred to L.E. Hugler Memo 2-10-54)
 L.F. 3129 Cont # 2141 8-18-52 Monroe Co, Tenn. Elevation 40' wide for Highway purposes only. Sta 389+06
 * 35418 Cont 41183 2-26-54 Fort Loudoun Elec. Coop. Power line x'ing over Sta 389+31
 * 19000-21 " 43822 B-B-57 Roy Hyder Fence from Sta. 17447+30 to Sta. 17443+10
 45938 12-14-59 Ernest J. Jones & John Howard Jones - Fence between Sta. 42467 and 42478



28

Match Mark for Next Sheet 17458+00

RIGHT OF WAY AND TRACK MAP
LOUISVILLE AND NASHVILLE R. R. CO.
 KNOXVILLE DIVISION
 STATION 17352+40 TO STATION 17458+00

SHEET NO. 20 OF 71 OF KNOXVILLE DIVISION FROM SURVEY
 STATION 17352+40 TO SURVEY STATION 17458+00
 SCALE - 1 INCH = 200 FT. JUNE 30 1917.
 OFFICE OF CHIEF ENGINEER,
 LOUISVILLE, KY.

N. B. Williams
 VALUATION ENGINEER