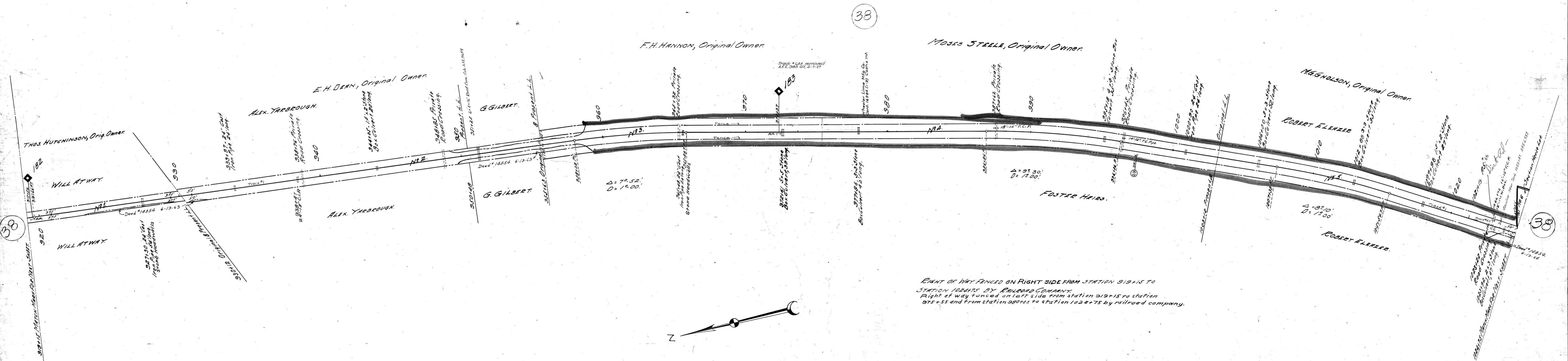


AFE No.	Date Compl.	Description of Change
3185	4-7-27	Removal of track #654
6337	11-9-25	Tral of baseline between Sta. 919+15 to Sta. 1024+75
5659	10-22-25	Rebaseline 31.3 culvert sta. 991+25 with 18" 6" dia. corr. conc. culvert.
36775	Oct. 1947	Ref. Trk. #66

No.	Grantor	Grantee	Inst.	Date	Record	Cust. No.	AFE	Area	Remarks
1	Thos. Hutchinson	M.C. & L.R.R.	Cond'n.	May 9, 1860					
1	"	"	Agmt.	1867	M.B. 575				
2	E.H. Dean	"	Cond'n.	Sept. 16, 1859					
3	No record of deed, charter width claimed								
4	Moses Steele	M.C. & L.R.R.	Deed	Mar. 16, 1854					
5	M.G. Gholson	"	"	"					
6	J.R. & C.E. Steel	"	"	Aug. 16, 1850 D.B. 19, P-135					
6	J.R. Steel	L.E.N.R.R.	"	May 12, 1903 D.B. 39, P-7					



RIGHT OF WAY FENCED ON RIGHT SIDE FROM STATION 919+15 TO STATION 1024+75 BY RAILROAD COMPANY.
 Right of way fenced on left side from station 919+15 to station 975+55 and from station 980+00 to station 1024+75 by railroad company.

Sheet No. 10 of 111 of Memphis Line from survey station 919+15 to survey station 1024+75
 Valuation Engineer

RIGHT OF WAY AND TRACK MAP
 LOUISVILLE AND NASHVILLE R. R. CO.
 MEMPHIS LINE
 STATION 919-15 TO STATION 1024-75
 SCALE 1 INCH = 200 FT.
 OFFICE OF CHIEF ENGINEER
 LOUISVILLE, KY.

063-015