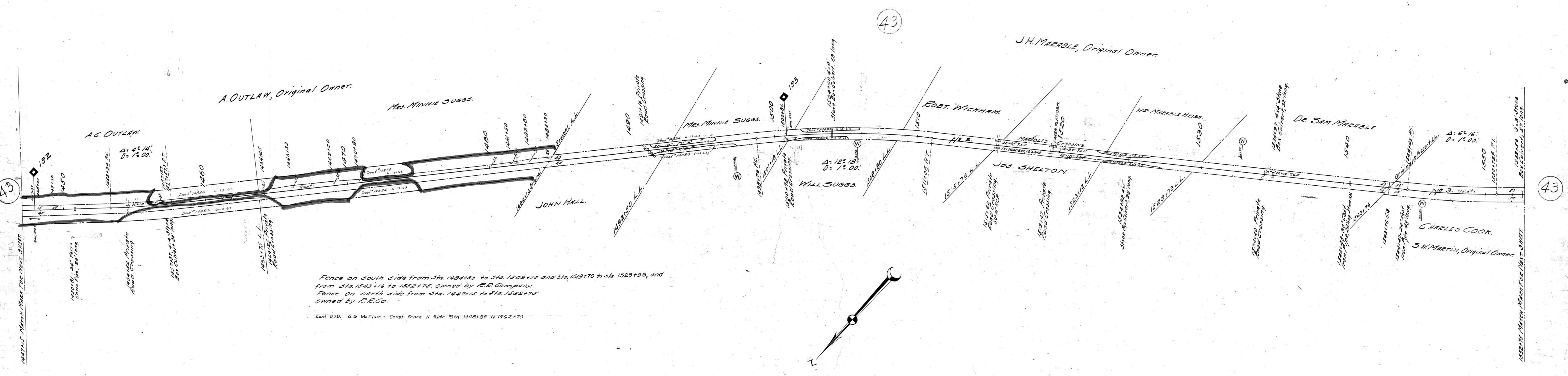


A.F.E. No. Date Comp. Description of Change  
 12887 2-11-30 Inv. of 30' x 40' platform at sta. 1457+57  
 14919 6-15-37 Rev. screening platform at sta. 1519+56  
 55358 10-12-44 Ret. stone Arch Culvert. 1495+35

No.	Grantor	Grantee	Inst.	Date	Record	Cust. No.	AFE	Area	Remarks
1	A. Outlaw	M.C. & L. R.R.	Dead	Mar. 23, 1854					
2	J.H. Marable	"	Con'd'n.	Aug. 20, 1867	M.B. 572				
3	S.W. Martin et al	L. & N.	"	May 19, 1880					



Fence on south side from Sta. 1484+30 to Sta. 1509+10 and Sta. 1519+70 to Sta. 1529+95, and  
 from Sta. 1543+16 to 1552+75, owned by R.R. Company.  
 Fence on north side from Sta. 1447+15 to Sta. 1552+75  
 owned by R.R. Co.

Cont. 0701 G.G. McClure - Const. Fence N. Side Sta. 1408+88 to 1462+79

Sheet No. 15 of 111 of Memphis Line from survey station  
 1447+15 to survey station 1552+75  
 Valuation Engineer

RIGHT OF WAY AND TRACK MAP  
 LOUISVILLE AND NASHVILLE R. R. CO.  
 MEMPHIS LINE  
 STATION 1447+15 TO STATION 1552+75

SCALE 1 INCH = 200 FT.  
 OFFICE OF CHIEF ENGINEER  
 LOUISVILLE, KY.

063-020