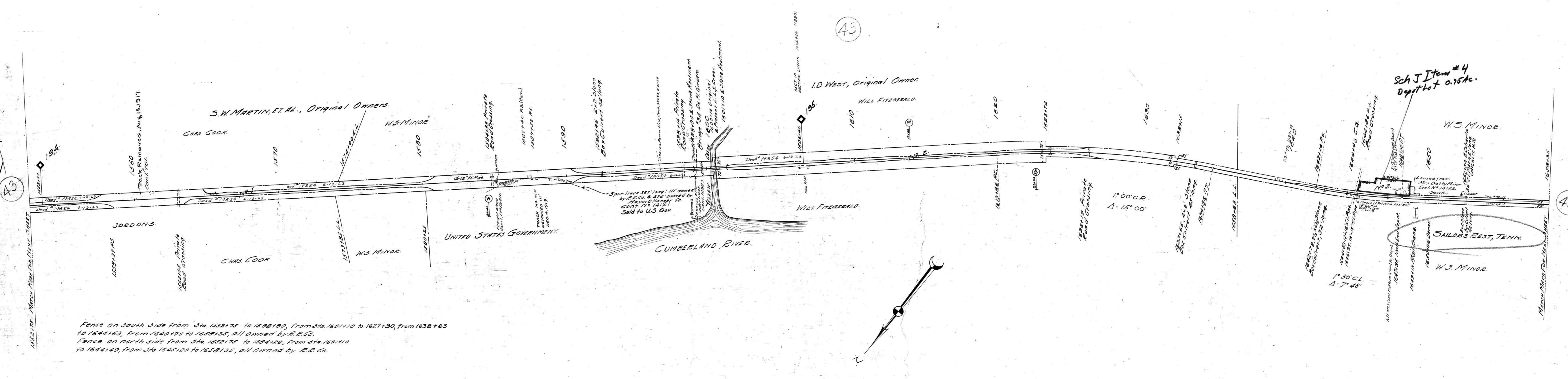


AFENo.	Date Comp.	Description of change.
4227	10-4-23	Const. of tobacco loading platform and shed addition to Depot.
22909	10-30-37	Ret. of stack pens
23284	2-16-38	Comb Station at Sailors Rest.
24411	8-13-39	North turn-out (U.S.P.) of the track. New L. 3110
30220	-42	Extn. to Trk # 72 - Ret. of Trk # 73
46810	6-15-37	Ret. Screening platform at sta. 1647+13.
53338	10-24-63	Ret. Stone box at Sta. 1563+10
53356	7-1-63	Work on Br. # 154.5

No.	Grantor	Grantee	Inst.	Date	Record	Cust. No.	AFE	Area	Remarks
1	S.W. Martin et al	L. & N.	Condn.	May 19, 1880					
2	I. D. West	M. C. & L. R.R.	"	Aug. 20, 1867	M.B. 259				
3	John Minor	L. & N.	Deed	Mar. 3, 1883					



Fence on South side from Sta. 1552+75 to 1598+90, from Sta. 1601+10 to 1627+90, from 1638+63 to 1644+63, from 1649+70 to 1658+35, all owned by R.R. Co.
 Fence on North side from Sta. 1552+75 to 1584+20, from Sta. 1601+10 to 1644+49, from Sta. 1645+20 to 1658+35, all owned by R.R. Co.

Sheet No. 16 of 111 of Memphis Line from survey station 1552+75 to survey station 1658+35
 Valuation Engineer

RIGHT OF WAY AND TRACK MAP
 LOUISVILLE AND NASHVILLE R. R. CO.
 MEMPHIS LINE
 STATION 1552+75 TO STATION 1658+35
 SCALE 1 INCH = 200 FT.
 OFFICE OF CHIEF ENGINEER
 LOUISVILLE, KY.

063-021

MONTGOMERY COUNTY, TENN.