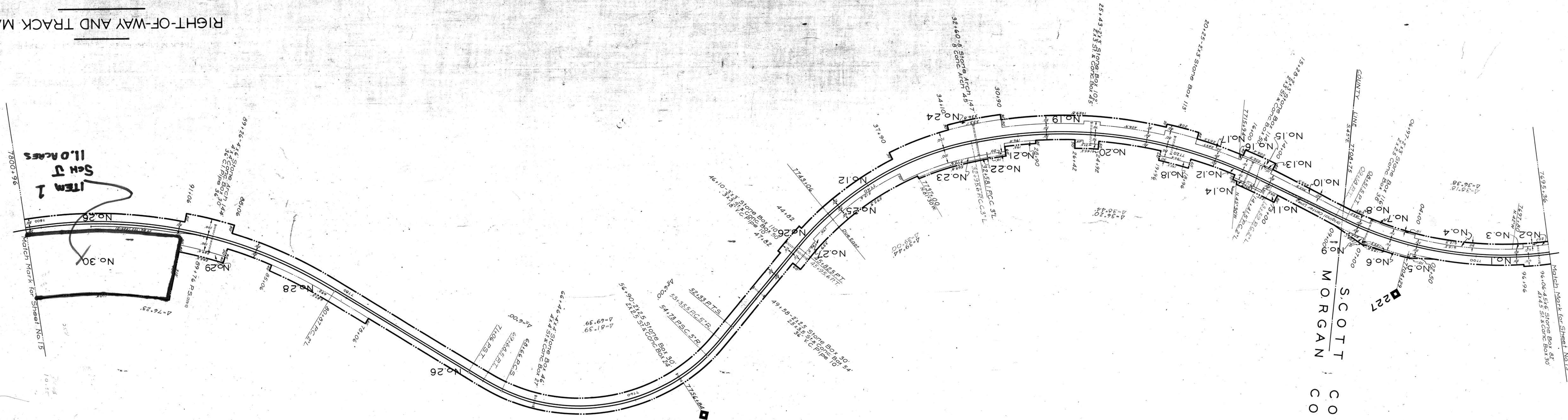


SCOTT COUNTY, TENN.  
MORGAN COUNTY, TENN.



HUFFMAN, TENN.

**RIGHT-OF-WAY AND TRACK MAP**  
**CINCINNATI SOUTHERN RAILWAY**  
Operated by  
**THE CINCINNATI, NEW ORLEANS & TEXAS PACIFIC RY. CO.**

STATION 7695+36 TO STATION 7800+96  
SCALE: 1"=200 FT. DECEMBER 31, 1927  
Office of Engineers  
Washington, D. C.

THIS MAP WAS NOT PREPARED OR INTENDED FOR USE AS A REAL ESTATE TITLE MAP. THE RAILWAY COMPANY DOES NOT REPRESENT OR SUGGEST THAT THE PROPERTY LINES AND RIGHT-OF-WAY LINES SHOWN ON THE MAP ARE ACCURATE, OR THAT ANY OTHER INFORMATION ON THE MAP IS CORRECT. THE COMPANY DOES NOT REPRESENT THAT IT HAS CHECKED THIS MAP FOR ACCURACY.

065-001

14  
W-TENN.