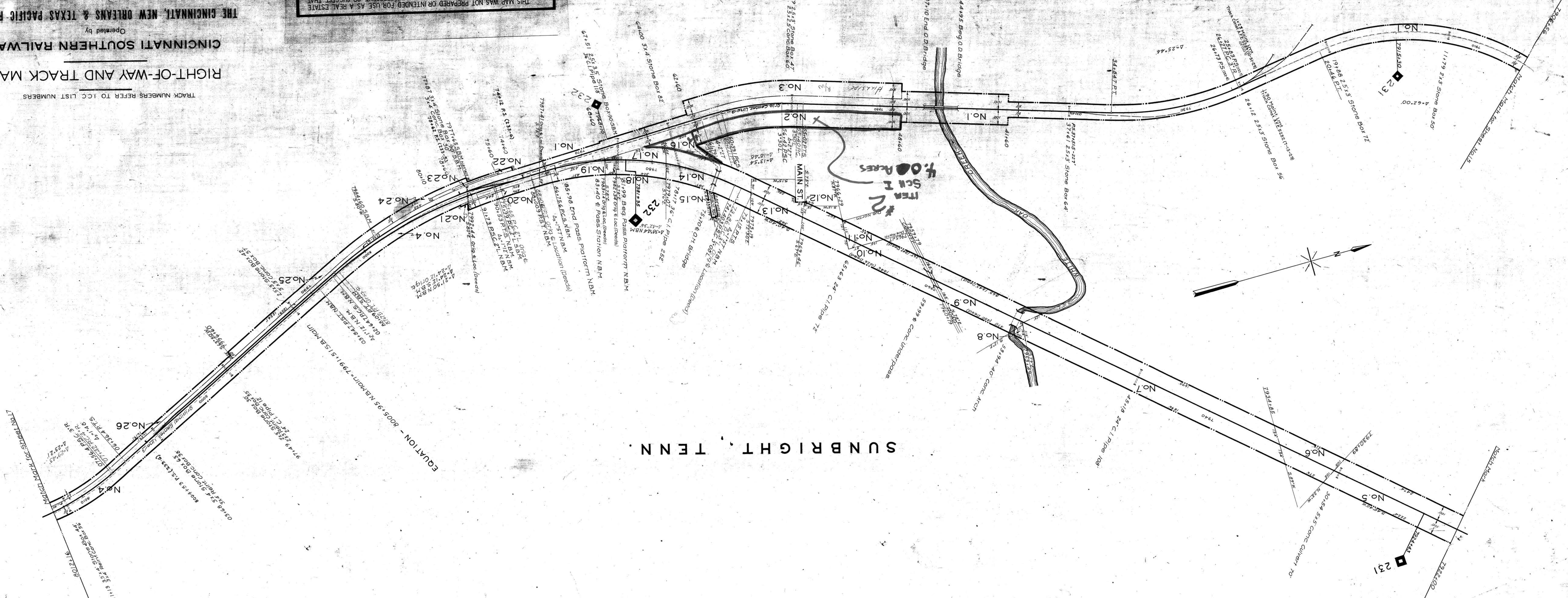


MORGAN COUNTY, TENN.

SUNBRIGHT, TENN.



THIS MAP WAS NOT PREPARED OR INTENDED FOR USE AS A REAL ESTATE TITLE MAP. THE RAILWAY COMPANY DOES NOT REPRESENT OR SUGGEST THAT THE PROPERTY LINES AND RIGHT-OF-WAY LINES SHOWN ON THE MAP ARE ACCURATE, OR THAT ANY OTHER INFORMATION ON THE MAP IS CORRECT. THE COMPANY DOES NOT REPRESENT THAT IT HAS CHECKED THIS MAP FOR ACCURACY.

TRACK NUMBERS REFER TO I.C.C. LIST NUMBERS
RIGHT-OF-WAY AND TRACK MAP
 Operated by
CINCINNATI SOUTHERN RAILWAY
 THE CINCINNATI, NEW ORLEANS & TEXAS PACIFIC RY. CO.
 Station 7906+56 TO Station 8012+16
 SCALE: 1 IN. = 200 FT. DECEMBER 31, 1927
 Office of Special Engineer
 Washington, D. C.

ADDITIONAL MAIN TRACK (HUEFMAN TO LANCING) CONST. A-F-E. NO. 29-NOV. 1920

065-002



STATIONING REFERS TO I.C.C. INVENTORY CHAINAGE-1918
 Tracks correct to Dec. 31, 1927