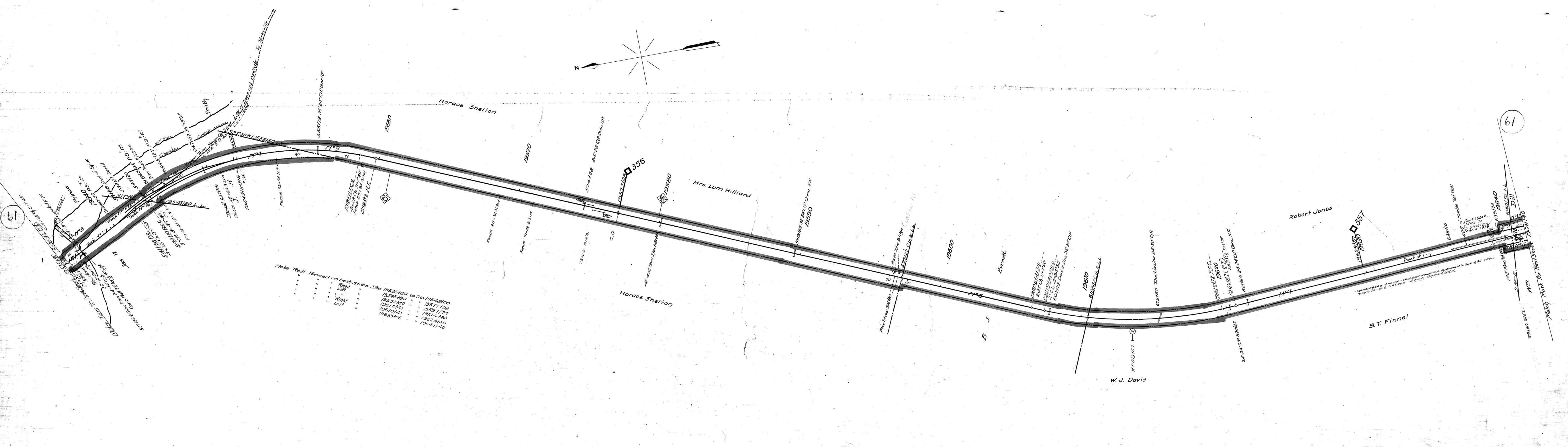


A.F.E. No.	Date Completed	Description of Change
4674	1-12-34	Cost of three sections of R/W fence (1320') M&S 386
17392	7-31-37	Ret. 104' incl. so T.O. of track "126"
22637	7-31-37	Inst. of so T.O. of T&N#126



Note: R/W Fenced on both sides Sta 19535+80 to Sta 19641+40

Right	Left
19535+80	19535+80
19545+80	19545+80
19571+00	19571+00
19610+41	19610+41
19633+95	19633+95

**RIGHT OF WAY AND TRACK MAP
LOUISVILLE AND NASHVILLE R. R. CO.
ATLANTA DIVISION "NEW LINE"**

SHEET NO. 41 OF 71 OF ATLANTA DIVISION - NEW LINE FROM SURVEY
STATION 19535+80 TO SURVEY STATION 19641+40
SCALE - 1 INCH = 200 FT. JUNE 30 1937.

N. C. Williams
VALUATION ENGINEER

OFFICE OF CHIEF ENGINEER
LOUISVILLE, KY.

070-012

Folk County Tenn.

V29
41