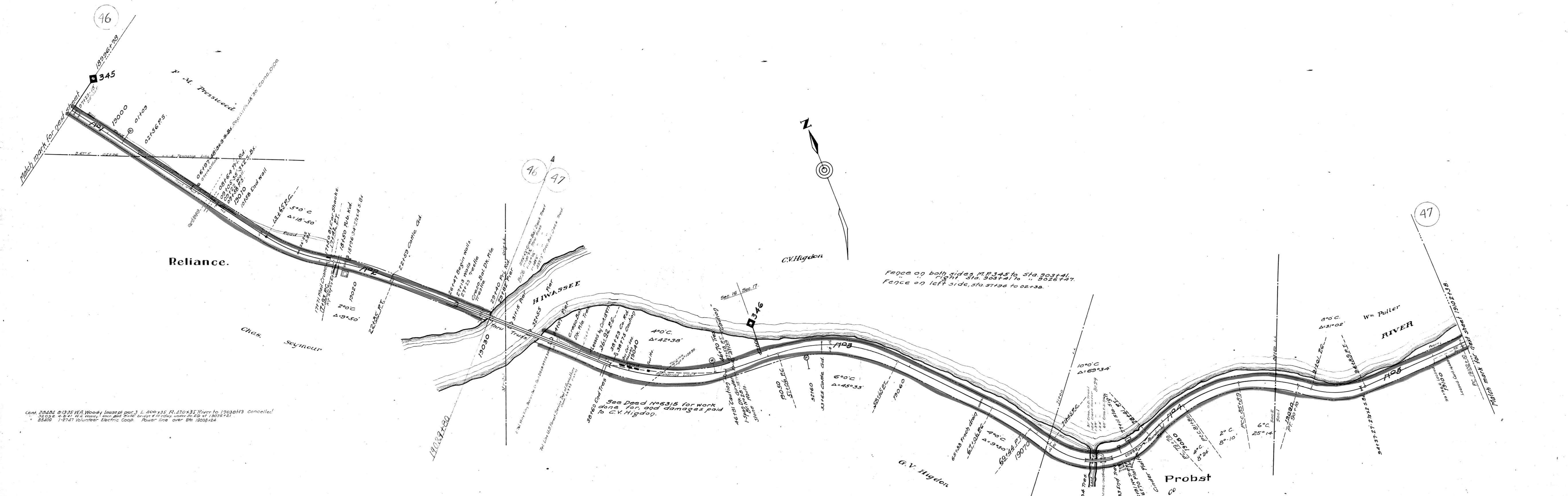


AFE No.	Date comp.	Description of change
11386	11-15-28	Replacing 48' x 3' stone box cul with 48' x 30" conc. pipe Sta. 19006+79
31372	10-19-43	Repair tool house at Sta. 78+93.
46789	12-19-35	Repair box car body dead
41934	3-24-54	Install Guard Rail 5' x 2 1/2"
42626	3-23-53	Install Raising Pieces Br#26
25184		Work done on B.#26



Cont. 29424 5-13-35 W.A. Woody lease part 3 L. 400 x 15' R. 170 x 35' River to 19036+13 Cancelled
 35408 4-8-41 W.A. Woody lease part 3 L. 400 x 15' R. 170 x 35' River to 19036+13
 35409 1-27-47 Volunteer Electric Coop. Power line over B# 19006+78

See Dead No. 6315 for work done for, and damages paid to G.V. Higdon.

Fence on both sides M.P. 345 to Sta. 903+41. Right Sta. 903+41 to 9026+47. Fence on left side, sta. 971+36 to 02+38.

RIGHT OF WAY AND TRACK MAP
 LOUISVILLE AND NASHVILLE R. R. CO.
 ATLANTA DIVISION "OLD LINE"
 STATION 18996+78 TO STATION 19102+38
 SCALE - 1 INCH = 200 FT. JUNE 30 1917.

SHEET NO. 31E OF 71 OF ATLANTA DIVISION - OLD LINE FROM SURVEY STATION 18996+78 TO SURVEY STATION 19102+38

070-020

W. H. Williams
 CHIEF ENGINEER
 VALUATION ENGINEER

OFFICE OF CHIEF ENGINEER
 LOUISVILLE, KY.

V29
 31E

FOLK CO. TENN.