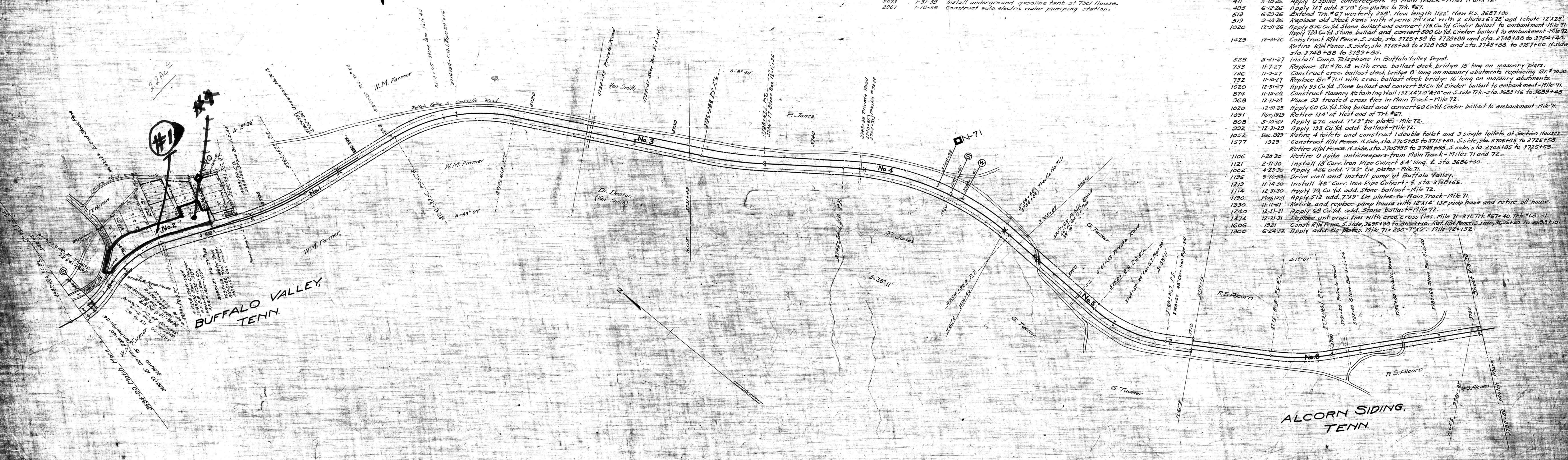


A.F.E. No.	DATE	DESCRIPTION
1467	12-31-33	Retire and replace R/W fence, S. side, sta. 3730+89.5 to sta. 3755+15.
1449	2-28-34	Apply add. 7"x10" tie plates, Mile 71+80. Mile 72+16.
1561	4-7-34	Install 18" corr. iron pipe culvert 60' long, \pm sta. 3685+73.
1546	5-22-34	Lay 90# rail, Main Track - sta. 3634+90 to 3693+90. Apply 532 90# rail anchors to Main Track - Mile 72.
1563	Apr. 1935	Apply add. 7"x10" tie plates, Mile 71+71, Mile 72+1224.
1562	35	Lay 80# rail in 905' of Track # 67, 1193' of Track # 68.
1662	12-35	Place 203 C.Y. stone ballast in M.T. Mile 72.
1666	12-31-35	Place tie plates in M.T. Mile 71.
1698	7-27-36	Lay 90# new rail in M.T. Sta. 3693+90 to Sta. 3694+86.5 & 100' relay rail Sta. 3694+86.5 to Sta. 3790+50, and 98' of Track # 68 at West T.O. & 11' of East T.O. & shorten track at East end 103'.
1736	12-36	Place 339 C.Y. stone ballast in M.T. Miles 71 & 34 C.Y. in Mile 72.
1737	12-31-36	Place tie plates in M.T. Miles 71 & 72.
1879	1-37	Replace stone box at Sta. 3714+05 with a 24" C.G.I. Pipe at Sta. 3714+94.
2073	1-31-39	Install underground gasoline tank at Tool House.
2067	1-18-39	Construct auto. electric water pumping station.

A.F.E. No.	DATE	DESCRIPTION
374	2-3-19	Lay 80# rail, Main Track - sta. 3684+90 to 3780+50, Trk. #67-154' N. end - Trk. #68-154' N. end and 154' E. end.
369	4-25-19	Apply add. 7"x10" tie plates to Main Track, Mile 71=3400, Mile 72=3254.
371	4-30-19	Replace 60" angle bars with 60" 24" Cont. Jts. Mile 71=352, Mile 72=352.
701	1-31-22	Retire all roadway property by sale to T.C. Ry. Co.
53	2-1-22	Addition of all roadway property by purchase from T.C. R.R. Co.
22	6-22-23	Apply add. 7"x9" tie plates, Mile 71=7-5'x8", Trk. #68=172-7'x9".
242	12-13-23	Apply add. tie plates, Mile 71=7-5'x8", Trk. #68=172-7'x9".
1424	12-31-23	Retire and replace R/W fence, S. side, sta. 3758+10 to 3785+00.
321	3-7-24	Apply fourth chords to Brs. #70-18 and 71-11.
345	11-20-24	Apply tie plates, Mile 71=327, Trk. #67=896-7'x9" and 23-5 1/2'x8", Trk. #68=928.
1020	12-31-24	Apply 171 Cu. Yd. slag ballast and convert 29 Cu. Yd. cinder ballast to embankment - Mile 72.
372	1-5-25	Install fire extinguisher in Buffalo Valley Depot.
1366	1925	Retire cross ties from Main Track, Mile 71=168, Mile 72=246.
411	5-18-26	Apply U spike anticreepers to Main Track - Miles 71 and 72.
495	6-12-26	Apply 127 add. 5"x8" tie plates to Trk. #67.
513	6-29-26	Extend Trk. #67 westerly 258'. New length 1122'. New R.S. 3687+00.
519	9-18-26	Replace old Stack Pens with 3 pens 24'x32' with 2 chutes 6'x28' and 1 chute 12'x28'.
1020	12-31-26	Apply 836 Cu. Yd. Stone ballast and convert 175 Cu. Yd. Cinder ballast to embankment - Mile 71.
1429	12-31-26	Apply 728 Cu. Yd. Stone ballast and convert 300 Cu. Yd. Cinder ballast to embankment - Mile 72.
		Construct R/W fence, S. side, sta. 3725+58 to 3728+88 and sta. 3748+88 to 3754+40. Retire R/W fence, S. side, sta. 3725+58 to 3728+88 and sta. 3748+88 to 3757+60. N. side, sta. 3748+88 to 3789+85.
528	5-21-27	Install Comp. Telephone in Buffalo Valley Depot.
733	11-7-27	Replace Br. #70-18 with creo. ballast deck bridge 15' long on masonry piers.
736	11-9-27	Construct creo. ballast deck bridge 8' long on masonry abutments replacing Br. #70-30.
732	11-10-27	Replace Br. #71-11 with creo. ballast deck bridge 16' long on masonry abutments.
1020	12-31-27	Apply 93 Cu. Yd. Stone ballast and convert 93 Cu. Yd. Cinder ballast to embankment - Mile 71.
874	11-15-28	Construct Masonry Retaining Wall 132'x4'x21'x30" on S. side Trk. - sta. 3689+16 to 3689+48.
968	12-31-28	Place 93 treated cross ties in Main Track - Mile 72.
1020	12-31-28	Apply 60 Cu. Yd. Slag ballast and convert 60 Cu. Yd. Cinder ballast to embankment - Mile 71.
1091	Apr. 1929	Retire 134' of West end of Trk. #67.
808	5-10-29	Apply 676 add. 7"x9" tie plates - Mile 72.
992	12-31-29	Apply 193 Cu. Yd. add. ballast - Mile 72.
1052	Dec. 1929	Retire 4 toilets and construct double toilet and 3 single toilets at Section House.
1577	1929	Construct R/W fence, N. side, sta. 3705+85 to 3748+88, S. side, sta. 3705+85 to 3725+58. Retire R/W fence, N. side, sta. 3705+85 to 3748+88, S. side, sta. 3705+85 to 3725+58.
1106	1-28-30	Retire U spike anticreepers from Main Track - Miles 71 and 72.
1121	2-11-30	Install 18" corr. iron pipe culvert 54' long, \pm sta. 3686+00.
1002	4-23-30	Apply 426 add. 7"x9" tie plates - Mile 71.
1196	9-10-30	Drive well and install pump at Buffalo Valley.
1219	11-14-30	Install 48" corr. iron pipe culvert - \pm sta. 3768+65.
1114	12-31-30	Apply 78 Cu. Yd. add. stone ballast - Mile 72.
1190	May 1931	Apply 512 add. 7"x9" tie plates to Main Track - Mile 71.
1330	11-11-31	Retire and replace pump house with 12'x14' 15F pump house and retire oil house.
1240	12-31-31	Apply 68 Cu. Yd. add. Stone ballast - Mile 72.
1474	12-31-31	Replace unt. cross ties with creo. cross ties, Mile 71=371, Trk. #67=40, Trk. #68=31.
1606	1931	Const. R/W fence, S. side, 3695+90 to 3698+10. Ret. R/W fence, S. side, 3696+20 to 3698+10.
1300	6-24-32	Apply add. tie plates, Mile 71=200-7'x9", Mile 72=132.



RIGHT-OF-WAY AND TRACK MAP
 EASTERN DIVISION
 TENNESSEE CENTRAL RAILROAD
 STATION 3684+90 TO STATION 3790+50
 200 FT. JUNE 30, 1918