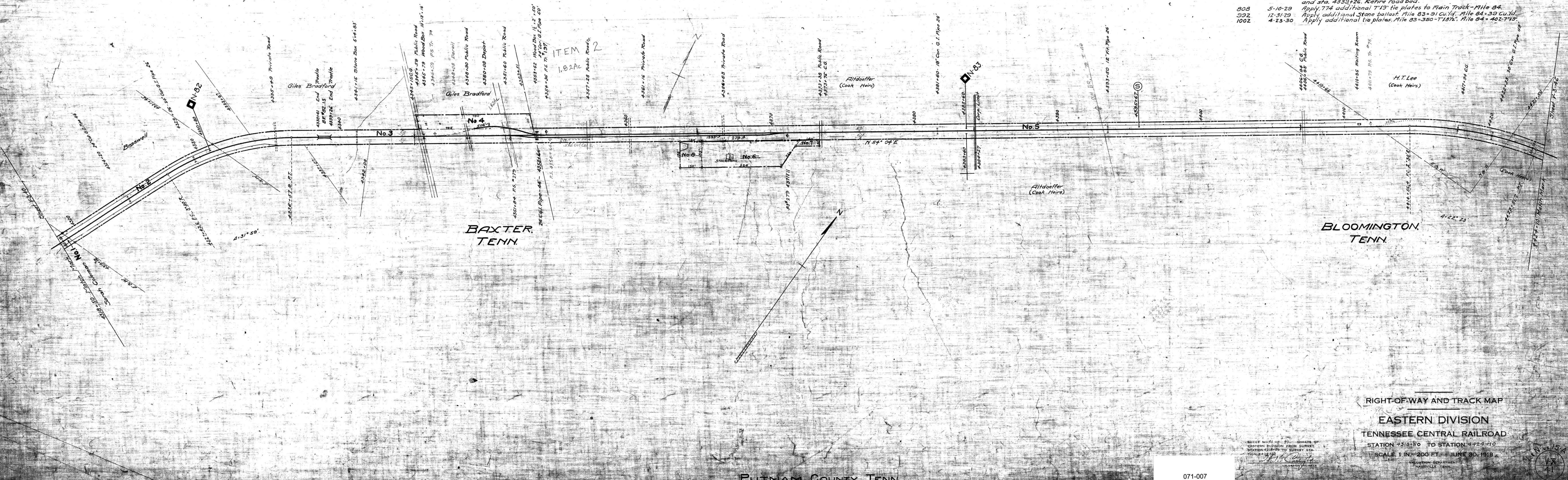


PROPERTY CHANGES - CONT.

A.F.E. No.	DATE	DESCRIPTION
1114	12-31-30	Apply 231 Cu.Yd. Stone ballast and 33 Cu.Yd. Screenings - Mile 83. Apply 116 Cu.Yd. Stone ballast and 163 Cu.Yd. Screenings - Mile 84.
1190	May, 1931	Apply additional 7" x 9" tie plates to Main Track Mile 83-332. Mile 84-736.
1474	12-31-31	Replace uncross ties with cross ties in Main Track Mile 83-166. Mile 84-214.
1300	6-24-32	Apply 444 additional 7" x 10" tie plates on Main Track - Mile 84.
1353	12-31-32	Apply additional Stone ballast to Main Track. Mile 83-36 Cu.Yd. Mile 84-70 Cu.Yd.
1573	4-21-34	Retire spur track, 272' long, serving Standard Oil Co. Const. A.F.E. #352.
1516	7-20-34	Install 24" Cor. G.I. Pipe Culvert 44' long. & sta. 4353+66.
1563	Apr. 1935	Apply add. tie plates. Mile 83-306-7" x 9". Mile 84-314-7" x 10".
1666	12-31-35	Place tie plates in M.T. Miles 83 & 84.
1780	5-29-36	Replace 18" x 52" C.G.I. Pipe with 30" x 48" C.G.I. Pipe at Sta. 4420+33.
1736	12-31-36	Place tie plates in M.T. Mile 83.
1737	12-31-36	Place tie plates in M.T. Mile 83.
2040	7-38	Retire 470' Bloomington Spur Track # 76.
2006	12-31-38	Place tie plates in M.T. Miles 82 & 83.

PROPERTY CHANGES SINCE JUNE 30, 1918

A.F.E. No.	DATE	DESCRIPTION
564	4-30-21	Replace 60" Angle Bars with 60" x 24" Continuous Joints. Mile 83-248. Mile 84-352.
701	1-31-22	Retire all roadway property by sale to T.C.Ry. Co.
53	2-1-22	Addition of all roadway property by purchase from T.C.R.R. Co.
22	6-22-23	Apply 924 7" x 9" tie plates to Main Track - Mile 83.
242	12-13-23	Apply additional tie plates. Mile 83-266-7" x 9". Trk. #74-33-5 1/2" x 8".
253	12-31-23	Lay 80' rail, Main Track - sta. 4318+50 to 4424+10. Trk. #74-137' of E. and W. ends. Trk. #75-138' W. end and 155' E. end.
352	10-11-24	Construct spur track, 272' long, to serve Standard Oil Co. P.S. opp. 4354+64 on Trk. #75
345	11-20-24	Place additional tie plates. Mile 84-462. Trk. #75-22-5 1/2" x 8".
363	11-22-24	Retire 283' of west end of Trk. #74. New length 506'.
342	11-26-24	Construct Loading Track 1398' long. P.S. on Trk. #75 opp. sta. 4357+58.
372	1-6-25	Install fire extinguisher in Baxter depot.
396	2-28-25	Construct double stack pan 32' x 48' and Loading Chute 16' x 12' long.
1325	1925	Retire cross ties from Main Track. Mile 83-295. Mile 84-463.
562	10-20-26	Apply additional 7" x 9" tie plates. Trk. #74-164. Trk. #75-362. Trk. #76-78. Loading Trk. #264.
1020	12-31-27	Apply 47 Cu.Yd. additional Stone ballast and convert 8 Cu.Yd. Cinder ballast to embankment - Mile 84.
1430	12-31-27	Construct R/W Fence, S. side, sta. 4353+51 to 4356+00 and sta. 4374+10 to 4375+00. Retire R/W Fence, S. side, sta. 4335+49 to 4345+15 and sta. 4373+75 to 4383+60. N. side, sta. 4330+80 to 4345+15 and sta. 4373+75 to 4383+60.
634	7-24-28	Apply add. 7" x 9" tie plates. Mile 83-874 and 282-7" x 8 1/2".
849	10-20-28	Widen fills on Mile 83.
968	12-31-28	Place treated cross ties in Main Track. Mile 83-685. Mile 84-89.
1020	12-31-28	Apply 233 Cu.Yd. add. Stone ballast and convert 50 Cu.Yd. Cinders to embankment - Mile 83. Apply 120 Cu.Yd. Slag ballast and convert 20 Cu.Yd. Cinders to embankment - Mile 84.
1605	1928	Construct R/W Fence - S. side, sta. 4384+10 to 4393+50. Retire R/W Fence, S. side, sta. 4383+60 to sta. 4393+50.
893	2-20-29	Construct 81' x 82.15' area, ballasted deck trash 85' long. B.H. sta. 4339+41 and sta. 4339+26. Retire road bed.
808	5-10-29	Apply 774 additional 7" x 9" tie plates to Main Track - Mile 84.
992	12-31-29	Apply additional Stone ballast. Mile 83-91 Cu.Yd. Mile 84-33 Cu.Yd.
1002	4-23-30	Apply additional tie plates. Mile 83-350-7" x 8 1/2". Mile 84-402-7" x 9".



RIGHT-OF-WAY AND TRACK MAP
 EASTERN DIVISION
 TENNESSEE CENTRAL RAILROAD
 STATION 4318+50 TO STATION 4424+10
 SCALE 1 IN. = 200 FT. - JUNE 30, 1918