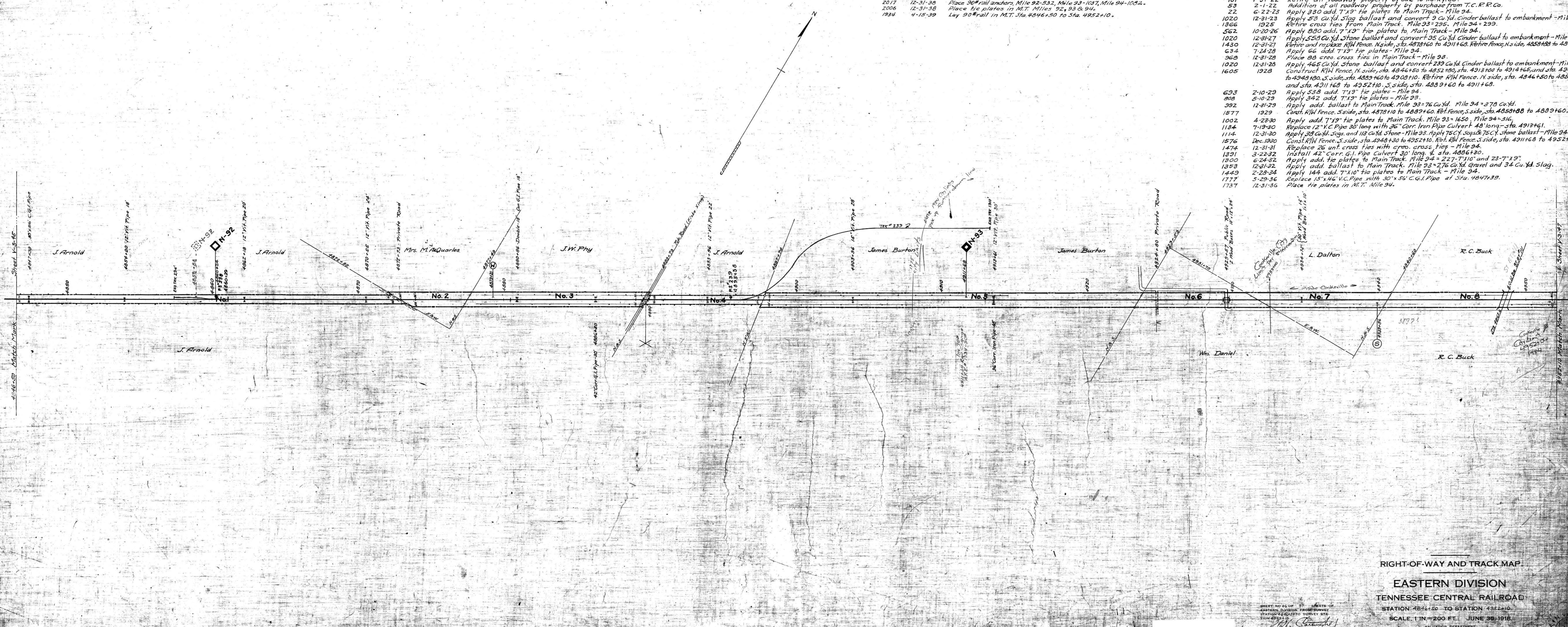


PROPERTY CHANGES cont.

1873 F	12-31-37	Place tie plates in M.T. Mile 94.
2017	12-31-38	Place 90# rail anchors, Mile 92-93.2, Mile 93-1037, Mile 94-1082.
2006	12-31-38	Place tie plates in M.T. Miles 92, 93 & 94.
1934	4-15-39	Lay 90# rail in M.T. Sta. 4846+50 to Sta. 4952+10.

PROPERTY CHANGES SINCE JUNE 30, 1918.

A.F.E. No.	DATE	DESCRIPTION
701	1-31-22	Retire all roadway property by sale to T.C.R.R. Co.
53	2-1-22	Addition of all roadway property by purchase from T.C.R.R. Co.
22	6-22-23	Apply 330 add. 7"x9" tie plates to Main Track - Mile 94.
1020	12-31-23	Apply 53 Cu.Yd. Slag ballast and convert 9 Cu.Yd. Cinder ballast to embankment - Mile 93.
1366	1925	Retire cross ties from Main Track. Mile 93-295. Mile 94-299.
562	10-20-26	Apply 830 add. 7"x9" tie plates to Main Track - Mile 94.
1020	12-31-27	Apply 558 Cu.Yd. Stone ballast and convert 9 Cu.Yd. Cinder ballast to embankment - Mile 93.
1430	12-31-27	Retire and replace R/W Fence. N side, sta. 4878+60 to 4911+68. Retire Fence, N side, sta. 4858+88 to 4948+80. S side, sta. 4889+60 to 4908+10. Retire R/W Fence. N side, sta. 4846+50 to 4858+88 and sta. 4911+68 to 4952+10. S side, sta. 4889+60 to 4911+68.
634	7-24-28	Apply 66 add. 7"x9" tie plates - Mile 94.
963	12-31-28	Place 88 creos. cross ties in Main Track - Mile 93.
1020	12-31-28	Apply 465 Cu.Yd. Stone ballast and convert 239 Cu.Yd. Cinder ballast to embankment - Mile 94.
1605	1928	Construct R/W Fence, N side, sta. 4846+50 to 4852+80, sta. 4913+00 to 4914+65, and sta. 4946+00 to 4948+80. S side, sta. 4889+60 to 4908+10. Retire R/W Fence. N side, sta. 4846+50 to 4858+88 and sta. 4911+68 to 4952+10. S side, sta. 4889+60 to 4911+68.
693	2-10-29	Apply 538 add. 7"x9" tie plates - Mile 94.
808	5-10-29	Apply 342 add. 7"x9" tie plates - Mile 93.
392	12-31-29	Apply add. ballast to Main Track. Mile 93-76 Cu.Yd. Mile 94-378 Cu.Yd.
1577	1929	Const. R/W Fence. S side, sta. 4878+10 to 4889+60. Ret. Fence, S side, sta. 4858+88 to 4889+60.
1002	4-23-30	Apply add. 7"x9" tie plates to Main Track. Mile 93-1650. Mile 94-316.
1134	7-19-30	Replace 12" V.C. Pipe 30' long with 26" Corr. Iron Pipe Culvert 48' long - sta. 4913+61.
1114	12-31-30	Apply 38 Cu.Yd. Slags and 118 Cu.Yd. Stone - Mile 93. Apply 75 C.Y. Slags & 75 C.Y. Stone ballast - Mile 94.
1576	Dec. 1930	Const. R/W Fence. S side, sta. 4948+30 to 4952+10. Ret. R/W Fence. S side, sta. 4911+68 to 4952+10.
1474	12-31-31	Replace 26 unt. cross ties with creos. cross ties - Mile 94.
1391	3-22-32	Install 42" Corr. G.I. Pipe Culvert 30' long. E. sta. 4886+30.
1300	6-24-32	Apply add. tie plates to Main Track. Mile 94-227-7'11" and 23-7'11" 19".
1353	12-31-32	Apply add. ballast to Main Track. Mile 93-276 Cu.Yd. Gravel and 34 Cu.Yd. Slag.
1449	2-28-34	Apply 144 add. 7"x10" tie plates to Main Track - Mile 94.
1777	5-29-36	Replace 15"x46" V.C. Pipe with 30"x56" C.G.I. Pipe at Sta. 4847+39.
1737	12-31-36	Place Tie plates in M.T. Mile 94.



POTNAM COUNTY, TENN.

071-013

SHEET NO. 2 OF 37 SHEETS OF
EASTERN DIVISION TRACK SURVEY
STATION 4846+50 TO STATION 4952+10
T.C.R.R. CO.
J. H. [Signature]
VALUATION ENGINEER

RIGHT-OF-WAY AND TRACK MAP
EASTERN DIVISION
TENNESSEE CENTRAL RAILROAD
STATION 4846+50 TO STATION 4952+10
SCALE 1 IN. = 200 FT. JUNE 30, 1918
VALUATION DEPARTMENT
NASHVILLE, TENN.

15
V-2
46