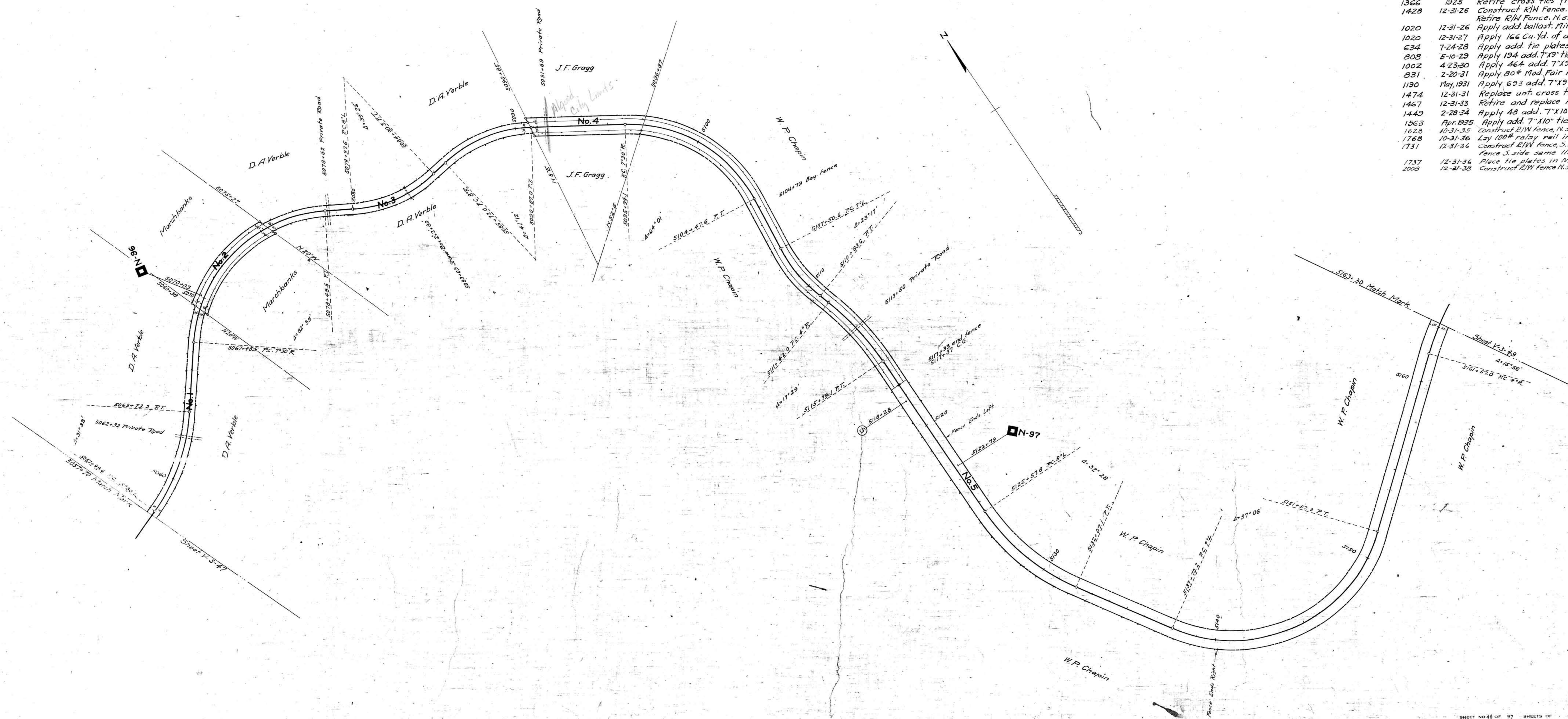


PROPERTY CHANGES SINCE JUNE 30, 1918.

A.F.E.No.	DATE	DESCRIPTION
701	1-31-22	Retire all roadway property by sale to T.C.R. Co.
53	2-1-22	Addition of all roadway property by purchase from T.C.R. Co.
22	6-22-23	Apply add. 7"x9" tie plates to Main Track. Mile 97-3795. Mile 98-2423.
1020	12-31-23	Apply add. Slag ballast to Main Track. Mile 97-46 Cu.Yd. Mile 98-91 Cu.Yd.
345	11-20-24	Apply add. 7"x9" tie plates to Main Track. Mile 97-1427. Mile 98-1910.
1020	12-31-24	Apply add. Slag ballast to Main Track. Mile 97-130 Cu.Yd. Mile 98-100 Cu.Yd.
1020	12-31-25	Apply add. Slag ballast to Main Track. Mile 97-169 Cu.Yd. Mile 98-148 Cu.Yd.
1366	1925	Retire cross ties from Main Track. Mile 97-75. Mile 98-9.
1428	12-31-25	Construct R/W Fence. N. side, sta. 5057+70 to 5069+38. S. side, sta. 5122+79 to 5140+10. Retire R/W Fence. N. side, sta. 5057+70 to 5069+38. S. side, sta. 5122+79 to 5140+10.
1020	12-31-26	Apply add. ballast. Mile 97-572 Cu.Yd. Stone. Mile 98-86 Cu.Yd. Stone and 94 Cu.Yd. Slag.
1020	12-31-27	Apply 166 Cu.Yd. of add. Stone ballast to Main Track- Mile 98.
634	7-24-28	Apply add. tie plates to Main Track. Mile 98-600-7"x9" and 97-7"x8 1/2".
808	5-10-29	Apply 194 add. 7"x9" tie plates- Mile 97. Retire 1246-5"x8" tie plates- Mile 97.
1002	4-23-30	Apply 464 add. 7"x9" tie plates- Mile 97.
831	2-20-31	Apply 80# Mod. Fair Rail Anchors to Main Track. Mile 97-1268. Mile 98-1254.
1190	May, 1931	Apply 693 add. 7"x9" tie plates- Mile 98.
1474	12-31-31	Replace unt. cross ties with creos. cross ties in Main Track. Mile 97-68. Mile 98-537.
1467	12-31-33	Retire and replace R/W Fence. N. side, sta. 5083+53 to sta. 5091+45.
1443	2-28-34	Apply 48 add. 7"x10" tie plates to Main Track- Mile 97.
1563	Apr. 1935	Apply add. 7"x10" tie plates. Mile 97-35. Mile 98-130.
1628	10-31-35	Construct R/W Fence. N. side Sta. 5104+79 to Sta. 5117+33 & retire fence same limits.
1768	10-31-36	Lay 100# relay rail in M.T. Sta. 5057+70 to Sta. 5163+30
1731	12-31-36	Construct R/W fence, S. side Sta. 5057+70 to Sta. 5070+03, N. side Sta. 5061+78 to Sta. 5070+03, retire fence S. side same limits, N. side Sta. 5061+78 to Sta. 5063+38.
1737	12-31-36	Place tie plates in M.T. Miles 96, 97 & 98.
2006	12-31-38	Construct R/W Fence N. side Sta. 5061+03 to Sta. 5083+19, retire Sta. 5070+03 to Sta. 5083+33.



RIGHT-OF-WAY AND TRACK MAP  
 EASTERN DIVISION  
 TENNESSEE CENTRAL RAILROAD  
 STATION 5057+70 TO STATION 5163+30  
 SCALE, 1 IN. = 200 FT. JUNE 30, 1918

SHEET NO 48 OF 97 SHEETS OF  
 EASTERN DIVISION FROM SURVEY  
 STATION 5057+70 TO SURVEY STA-  
 TION 5163+30  
 VALUATION DEPARTMENT  
 KANSAS CITY, MO.