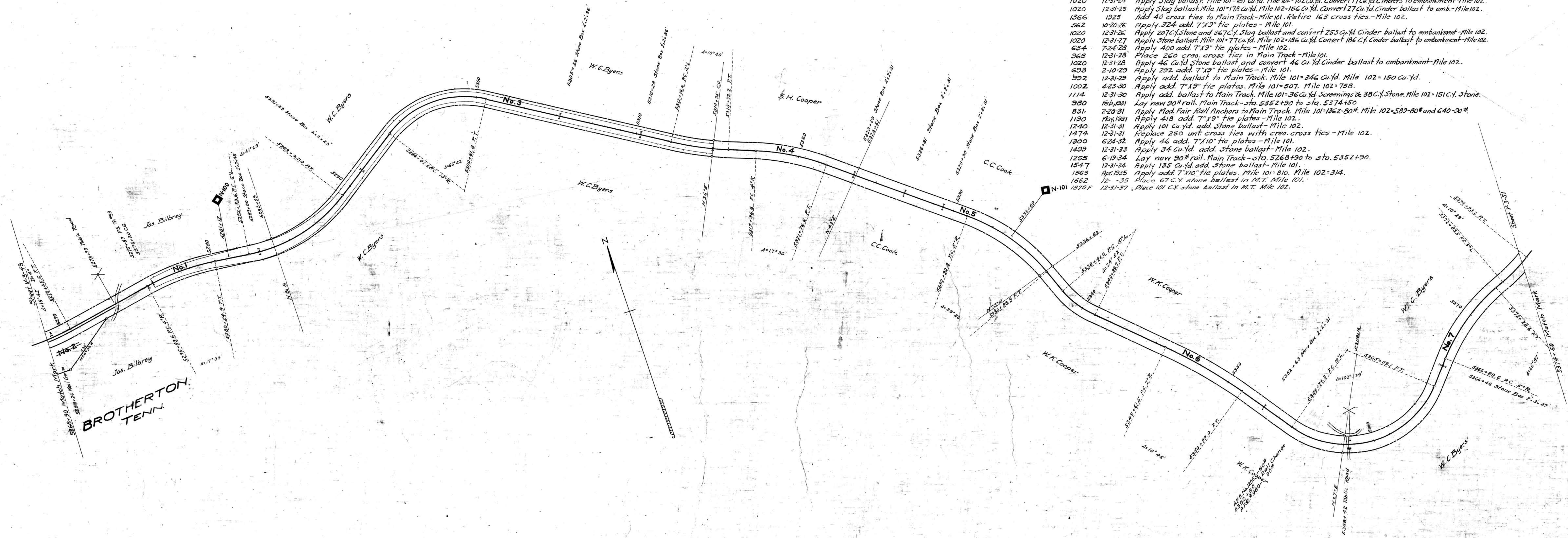


PROPERTY CHANGES SINCE JUNE 30, 1918.

A.F.E. No.	DATE	DESCRIPTION
701	1-31-22	Retire all roadway property by sale to T.C. Ry. Co.
53	2-1-22	Addition of all roadway property by purchase from T.C. R.R. Co.
242	12-31-22	Retire 96-5"x8" tie plates from Main Track - Mile 101.
22	6-22-23	Apply add. 7"x9" tie plates to Main Track. Mile 101=3136. Mile 102=3719.
15	12-31-23	Lay new 80# rail. Main Track - sta. 5268+90 to sta. 5275+00.
345	11-20-24	Apply add. 7"x9" tie plates. Mile 101=733. Mile 102=863.
1020	12-31-24	Apply Slag ballast. Mile 101=181 Cu.Yd. Mile 102=102 Cu.Yd. Convert 17 Cu.Yd. Cinders to embankment - Mile 102.
1020	12-31-25	Apply Slag ballast. Mile 101=178 Cu.Yd. Mile 102=156 Cu.Yd. Convert 27 Cu.Yd. Cinder ballast to emb. - Mile 102.
1366	1925	Add 40 cross ties to Main Track - Mile 101. Retire 163 cross ties - Mile 102.
562	10-20-26	Apply 324 add. 7"x9" tie plates - Mile 101.
1020	12-31-26	Apply 207 Cu.Yd. Stone and 367 Cu.Yd. Slag ballast and convert 253 Cu.Yd. Cinder ballast to embankment - Mile 102.
1020	12-31-27	Apply Stone ballast. Mile 101=77 Cu.Yd. Mile 102=186 Cu.Yd. Convert 186 Cu.Yd. Cinder ballast to embankment - Mile 102.
634	7-24-28	Apply 400 add. 7"x9" tie plates - Mile 102.
968	12-31-28	Place 260 cross ties in Main Track - Mile 101.
1020	12-31-28	Apply 46 Cu.Yd. Stone ballast and convert 46 Cu.Yd. Cinder ballast to embankment - Mile 102.
693	2-10-29	Apply 292 add. 7"x9" tie plates - Mile 101.
592	12-31-29	Apply add. ballast to Main Track. Mile 101=346 Cu.Yd. Mile 102=150 Cu.Yd.
1002	4-23-30	Apply add. 7"x9" tie plates. Mile 101=507. Mile 102=753.
1114	12-31-30	Apply add. ballast to Main Track. Mile 101=36 Cu.Yd. Screenings & 38 C.Y. Stone. Mile 102=151 C.Y. Stone.
980	184/1931	Lay new 90# rail. Main Track - sta. 5352+90 to sta. 5374+50.
831	2-20-31	Apply Mod. Fair Rail Anchors to Main Track. Mile 101=1262-80# & 640-90#.
1190	10/1/1931	Apply 418 add. 7"x9" tie plates - Mile 102.
1240	12-31-31	Apply 101 Cu.Yd. add. Stone ballast - Mile 102.
1474	12-31-31	Replace 250 unit cross ties with cross ties - Mile 102.
1300	6-24-32	Apply 46 add. 7"x10" tie plates - Mile 101.
1439	12-31-33	Apply 34 Cu.Yd. add. Stone ballast - Mile 102.
1255	6-19-34	Lay new 90# rail. Main Track - sta. 5268+90 to sta. 5352+90.
1547	12-31-34	Apply 135 Cu.Yd. add. Stone ballast - Mile 101.
1563	Apr. 1935	Apply add. 7"x10" tie plates. Mile 101=810. Mile 102=314.
1662	12-31-35	Place 67 C.Y. stone ballast in M.T. Mile 101.
1670	12-31-37	Place 101 C.Y. stone ballast in M.T. Mile 102.



RIGHT-OF-WAY AND TRACK MAP  
EASTERN DIVISION  
TENNESSEE CENTRAL RAILROAD

SHEET NO 50 OF 57 SHEETS OF  
EASTERN DIVISION FROM SURVEY  
STATION 5268+90 TO SURVEY STA  
TION 5374+50  
J. H. COOPER  
VALUATION ENGINEER

STATION 5268+90 TO STATION 5374+50  
SCALE 1 IN. = 200 FT. JUNE 30, 1918  
VALUATION DEPARTMENT  
NASHVILLE, TENN.