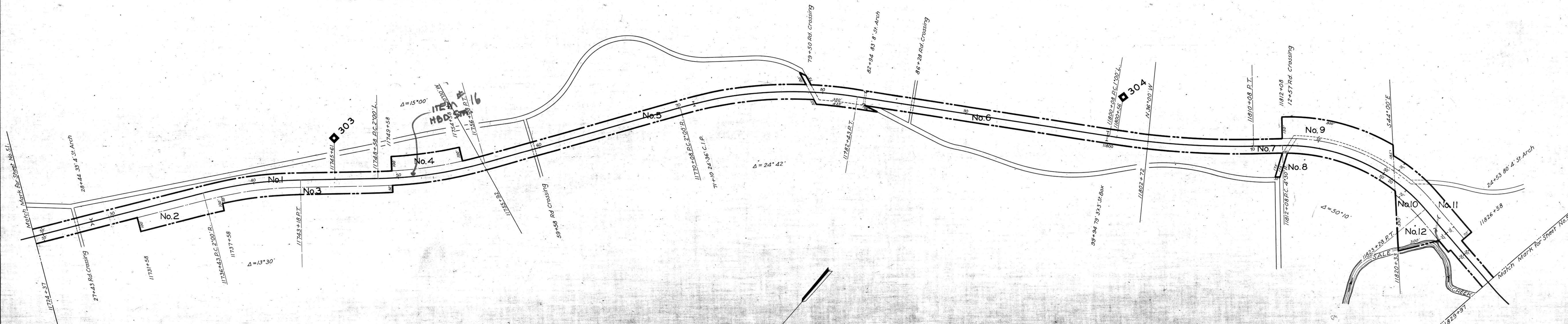


RHEA COUNTY, TENN.



THIS MAP WAS NOT PREPARED OR INTENDED FOR USE AS A REAL ESTATE TITLE MAP. THE RAILWAY COMPANY DOES NOT REPRESENT OR SUGGEST THAT THE PROPERTY LINES AND RIGHT-OF-WAY LINES SHOWN ON THE MAP ARE ACCURATE, OR THAT ANY OTHER INFORMATION ON THE MAP IS CORRECT. THE COMPANY DOES NOT REPRESENT THAT IT HAS CHECKED THIS MAP FOR ACCURACY.

TRACK NUMBERS REFER TO I.C.C. LIST NUMBERS  
**RIGHT-OF-WAY AND TRACK MAP**  
**CINCINNATI SOUTHERN RAILWAY**

Operated by  
**THE CINCINNATI, NEW ORLEANS & TEXAS PACIFIC RY. CO.**

STATION 11724+37 TO STATION 11829+97  
 SCALE: 1" IN. = 200 FT. DECEMBER 31, 1927

Office of Special Engineer  
 Washington, D. C.

STATIONING REFERS TO I.C.C. INVENTORY CHAINAGE - 1918  
 Tracks Correct to Dec. 31, 1933

072-015