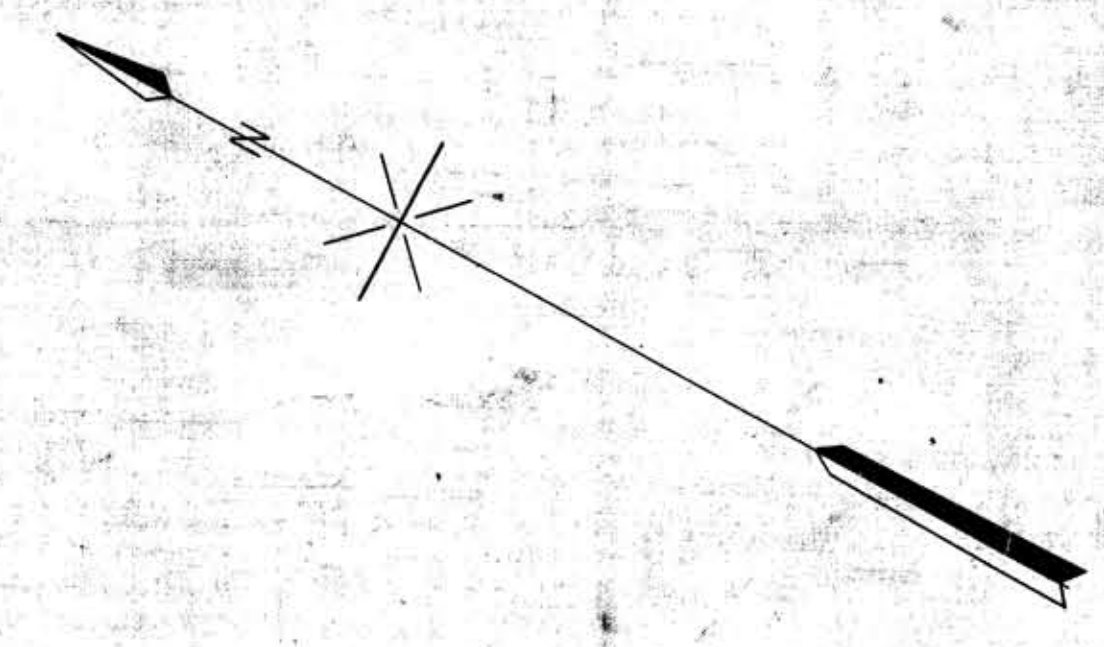
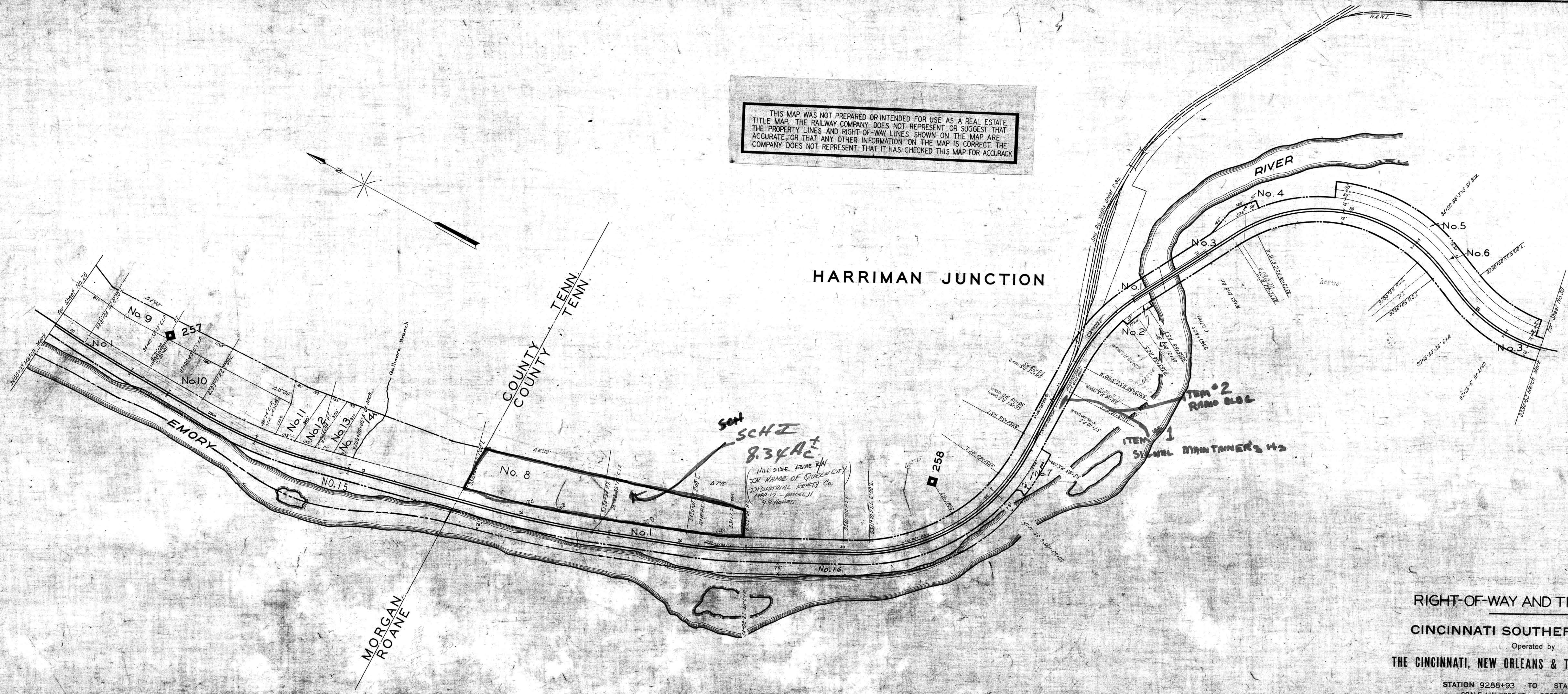


THIS MAP WAS NOT PREPARED OR INTENDED FOR USE AS A REAL ESTATE TITLE MAP. THE RAILWAY COMPANY DOES NOT REPRESENT OR SUGGEST THAT THE PROPERTY LINES AND RIGHT-OF-WAY LINES SHOWN ON THE MAP ARE ACCURATE, OR THAT ANY OTHER INFORMATION ON THE MAP IS CORRECT. THE COMPANY DOES NOT REPRESENT THAT IT HAS CHECKED THIS MAP FOR ACCURACY.



HARRIMAN JUNCTION



RIGHT-OF-WAY AND TRACK MAP
 CINCINNATI SOUTHERN RAILWAY
 Operated by
 THE CINCINNATI, NEW ORLEANS & TEXAS PACIFIC RY. CO.

STATION 9288+93 TO STATION 9394+53
 SCALE: 1 IN. = 200 FT. DECEMBER 31, 1927.

Office of Chief Engineer
 Washington, D. C.

073-001