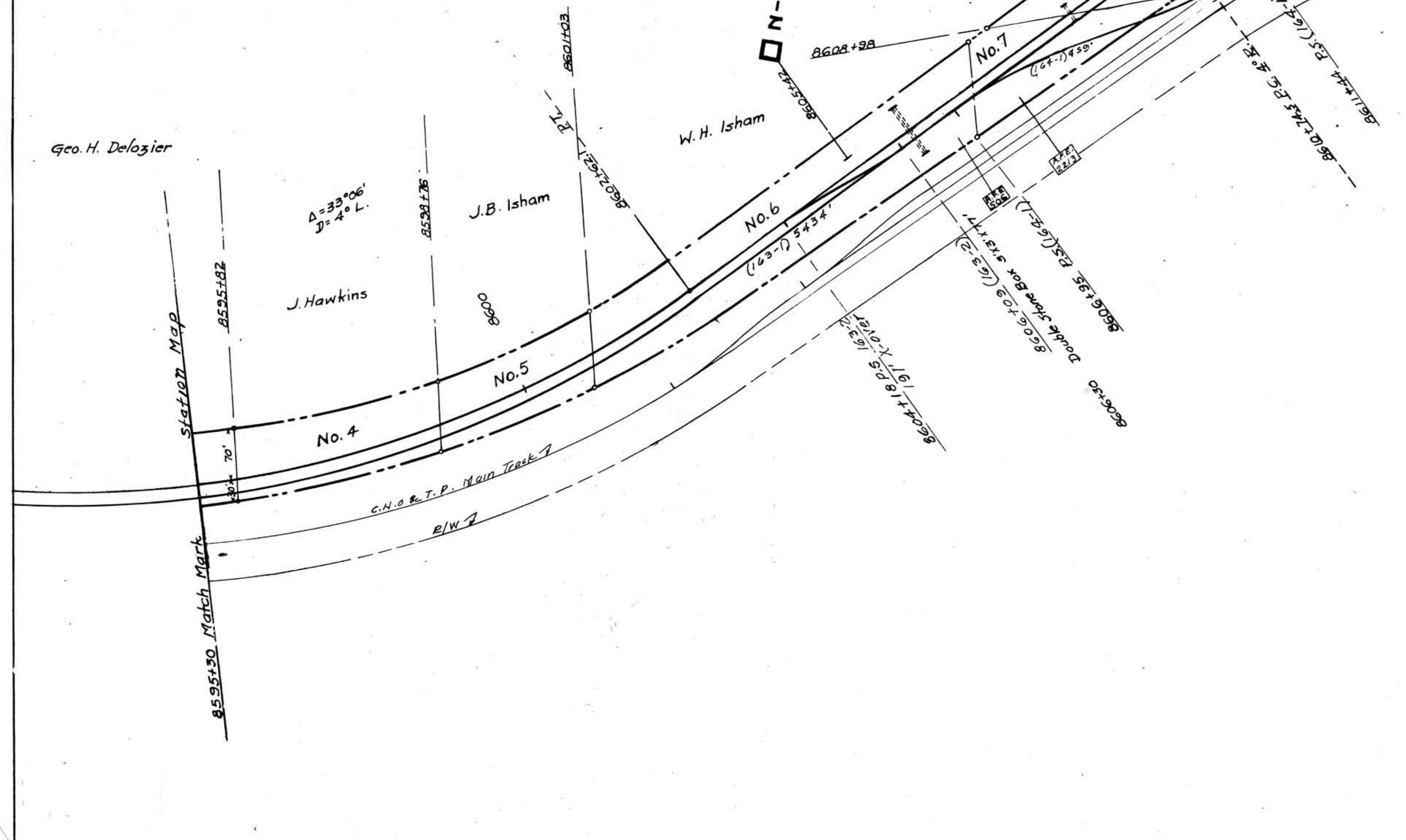


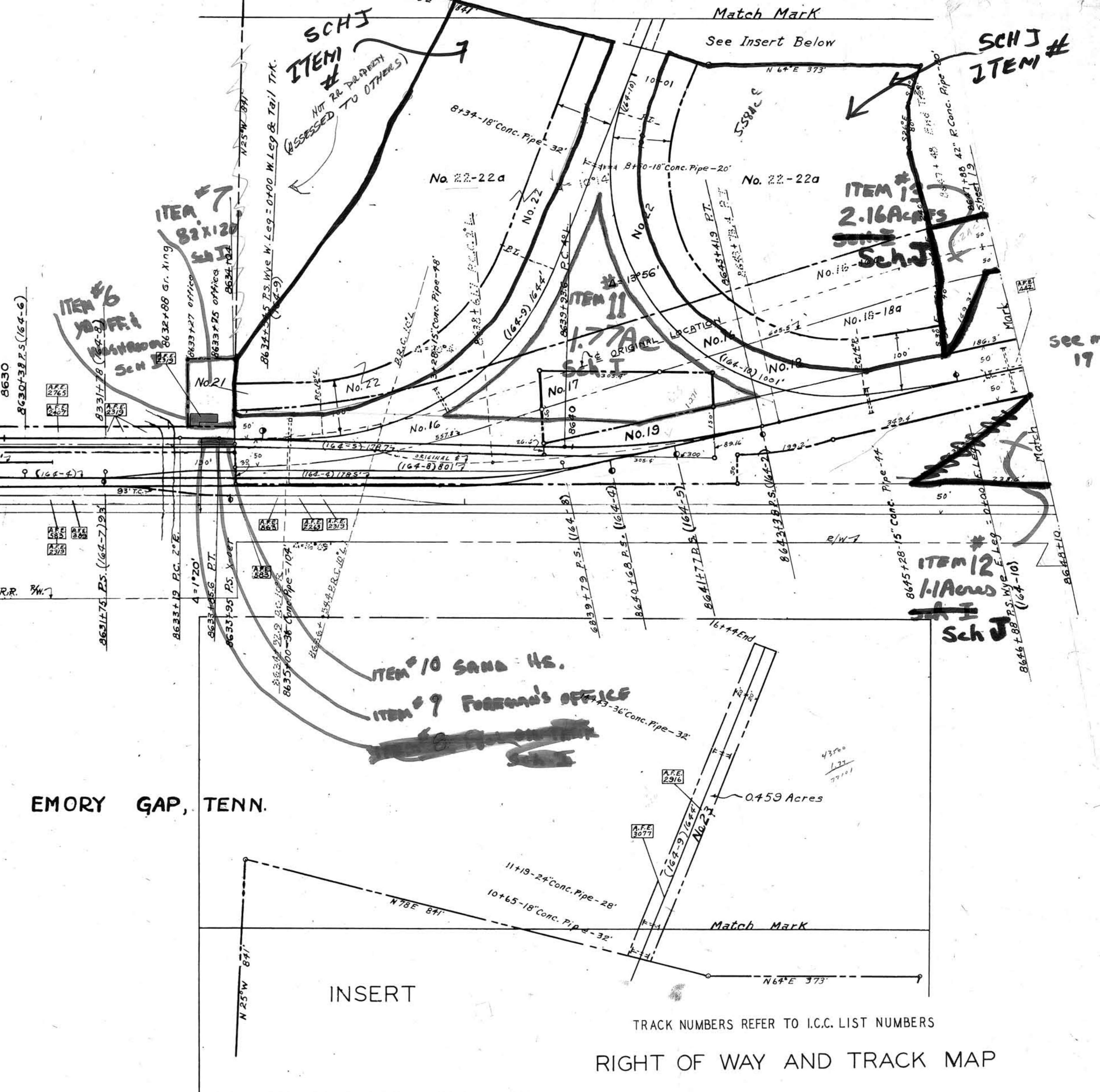
A.F.E. No.	DATE	DESCRIPTION
378	2-26-19	Replace 40' 60 ton track scale with a 40' 80 ton track scale in concrete pit.
383	4-25-19	Apply 284' add. 7"x8 1/2" tie plates - Mile 164.
383	4-7-20	Retire Cooling Station at Emory Gap.
547	5-13-20	Construct spur track, 549' long, to serve Emory Gap Coal Mining Co. P.S. sta. 8641+95.
583	6-9-20	Retire Oil House at Emory Gap.
582	6-19-20	Construct box car body Supply House.
588	11-6-20	Construct 1532' Pull-In Track. P.S. 8623+34 on Trk #176 and 8608+04 on Trk #174.
591	3-16-21	Fill 90' of E. end of Br #63.82. New length = 119'.
701	1-31-22	Retire all roadway property by sale to T.C.R.R. Co.
53	2-1-22	Addition of all roadway property by purchase from T.C.R.R. Co.
22	6-22-23	Apply 646' add. 7"x9" tie plates - Mile 164.
249	10-2-23	Relay 1246' of Trk #183 and 882' of Trk #184 with 70' rail and ext. Trk #184.
242	12-13-23	Apply add. tie plates. Mile 164=2681. Trk #177-12. Trk #178-326. Trk #179-175. Trk #181-499. Trk #182-426. Trk #183-431. Trk #184-280. Trk #186-110.
389	12-18-24	Install electric lights in Scale Shelter, For. Off. & Supply House, Repair Shop, Wash Room, Sand House, Oil House, and in Yards.
1020	12-31-24	Apply 204' C.Y. Slag ballast and convert 35 C.Y. Cinder ballast to embankment - Mile 164.
443	8-26-25	Retire Main Line and construct in new location - sta. 8635+45 to 8643+20. Extend Trk #175 east 186' by trans. 30' to Trk #182, absorbing 186' of old Main and const. 30'. Extend Trk #182 east 536' by absorbing 506' of Main Track and 30' of Trk #175. Change turnout of Trk #181 from Trk #175 to Trk #182 and extend 162' by retiring 120' and constructing 282'.
1366	1925	Retire 110 cross ties from Main Track - Mile 164.
517	2-5-26	Retire 549' spur track serving Emory Gap Coal Mining Co.
399	2-10-26	Apply 573' add. 7"x9" tie plates - Mile 164.
442	3-9-26	Replace Br. #163.82 with fill and 42" rainf. conc. pipe culvert 80' long.
522	4-14-26	Lay 80' rail. Trk #175-100' W. end. Trk #176-447'. Trk #179-93'. Trk #180-19' W. end. Lay 80' rail. Trk #175-100' W. end. Trk #176-447'. Trk #179-93'. Trk #180-19' W. end. Move W. end of Trk #175 from Main Track to Trk #176 and shorten 279'. Extend Trk #176 1377' west by retiring 128' W. end and conn. to and absorbing Pull-In Trk. 1505' long. Retire E. frog and switch of Pull-In Track.
495	6-12-26	Apply tie plates. Pull-In Trk. #566. Trk #174-315. Trk #177-163. Old Main Trk = 432. Retire 284' tie plates - Mile 164.
583	6-19-26	Retire and replace Blacksmith and Repair Shop. New bldg. 16' x . . .
566	7-12-26	Lay 80' rail. Trk #175-252'. Trk #176-947'. Trk #180-105'. Trk #182-110'.
461	7-19-26	Construct 347' Crossover, 469' Transfer Trk., 8'x89' Trans. Plat. and 8'x8' Office.
506	7-20-26	Ext. Trk. #174 W. 172'. P.S. 8605+44. Ext. Trk. #176 W. 30'. P.S. 3+46 on Trk. #174.
538	9-16-26	Construct 1189' Pull-In Track. P.S. 1+34 on Trk. #174 and on Trk. #176.
578	10-1-26	Rebuild Tool House with 12' x 15' frame. Tool House.
618	10-26-26	Construct 12' x 24' wood frame galy. metal siding shelter for Mtl. Storage Platform.
1020	12-31-26	Apply 627' C.Y. Slag L. last and convert 97 C.Y. Cinders to emb. - Mile 164.
694	7-30-27	Ext. Transfer Plk. form 96' westerly. Total length = 192'.
631	8-31-27	Apply tie plates on Trks. #174, 175, 176, 180, Transfer Trk., and Pull-In Trk.
302	5-29-40	Constructing 12 toilets of various locations replacing old toilets. Work done by W.R.A.

PARCEL	GRANTOR	GRANTEE	INSTR.	DATE	CONSID.	AREA ACRES	RECORDED BOOK	RECORDED PAGE	RECORDED DATE	CUSTOD.	REMARKS
4 to 23	A. Battle Rodes Trust, T.C. Ry. Co.	H. & N.E. R.R. Co.	deed	3-20-69						858-83	
All	H. & N.E. R.R. Co.	C.N.O. & T.P. R.R. Co.	Finance	Docket No. 2501	Service Date	3-14-70				#2	With recapture clause.
16 to 22	C.N.O. & T.P. Ry. Co.	Emory Gap & Country Club Inc.	Ease.	9-22-70	#1795.00	13.27					



A.F.E. No.	DATE	DESCRIPTION
766	Nov. 1927	Replace plain beam with type registering beam on Track Scales.
503	12-20-28	Lay 90' rail, Main Track - sta. 8595+50 to 8648+10. Trk #174 = 120'. Trk #175 = 158'. Trk #182 = 175'.
268	12-31-28	Place 131' add. cross ties - Mile 164.
693	2-10-29	Apply 222' add. 7"x9" tie plates - Mile 164.
982	7-20-29	Install 600' of 1 1/2" G.I. pipe air line in yards. Begin 14 1/2' E. For. House and 20' S. A.T. and ext. N.
1025	Dec. 1929	Retire Cattle Guards of sta. 8615+88 and 8641+34.
1474	12-31-31	Replace unit cross ties with cross ties. Mile 164 = 502. Trk #176 = 10.
1009	1931	Apply 398' add. 7"x9" tie plates - Mile 164.
1583	10-25-34	Ext. Trk. #178 west 107' by absorbing 97' of Trk. #177 and const. 10'. Ext. Trk. #177 west 480' by retiring 97' and const. 108' and absorbing 463' of Transfer Trk. Lay 80' rail in Trks. #175, 176, 178, 181, and 182.
1547	12-31-34	Apply 203' C.Y. add. Stone ballast - Mile 164.
1298	Apr. 1935	Apply add. tie plates. Mile 164 = 293. Trk #178 = 103.
1822	4- -37	Lay 90' relay rail in 343' of Trk #174, 544' of Trk #176 & retire 96' of East T.O. of #2 Pull-In Track.
1919	6-30-37	Retire transfer platform and office.
2005	12-31-38	Place tie plates in Tracks 174, 175 & 176.
2073	1-31-39	Install underground gasoline tank at Tool House.
2044	2- -39	Lay 602' tr. ft. of 80' rail in Delivery Track #176 (4' Pull-In).
2213	10-11-39	Retiring 1103' Ft. Pull-In Track #2. Addition of Cross Ties Etc. in Delivery Track #174.
2306	9- -40	Extending Delivery Trk. #176 easterly 33' by retiring 96' & constructing 129' of T.O. Extending Coach Trk. #182 easterly 57' by retiring 735' & constructing 792' of Trk. & Laying 449' of remaining portion of Trk. with 70' material. Retiring 616' Pit Trk. #181 & constructing 529' Engine Pit Trk. at new location. Constructing 630' Tank Trk. & 183' X-over from Tank Trk. to Engine Pit Trk.
2286	3-25-41	Constructing Concrete Engine Pit, Cinder Conveyor, Coal Conveyor & Sand Station replacing timber engine pit & old Sand House.
2263	2-9-40	Replacing 24' x 123' C.G.I. Pipe Culvert At Sta. 8635+00 With 36' x 104' Reinf. Concrete Pipe Culvert.
2248	10-28-40	Constructing a 5,000,000 gal. Water Storage Reservoir, 27,600 gal. Water Tank & Automatic Elec. Pumping Plant. Old Gasoline Pumping Plant & Water Tank Kept in Service for Auxiliary Use.
2319	12-18-40	Retiring air pipe line, shelter shed, blacksmith & repair shop, machinist's supply house, engine men's wash room, gasoline house & oil box, platform & Foreman's office & supply house. Constructing shop building & office, storeroom & washroom building.
2407	11-1-40	Retiring 17 tr. ft. of tail end of Repair Track #177 (Transfer Track)
2529	10- -41	Constructing woven wire fence around water storage reservoir. (Emory Gap)
2765	4-28-43	Extending Coach Trk. #182 westerly 371' by retiring 175' & constructing 546' including turnout. Addition & retirement of cross ties etc. in M.T. account turnout moved. Laying 299 tr. ft. of 90' & 389 tr. ft. of 80' replacing 70' in track #182. Laying 321 tr. ft. of 90' & 14 tr. ft. of 80' in track #177, replacing 60' & extend 12 ft. Adjustment of cross ties in M.T.

ROANE COUNTY, TENN.



THIS MAP WAS NOT PREPARED OR INTENDED FOR USE AS A REAL ESTATE TITLE MAP. THE RAILWAY COMPANY DOES NOT REPRESENT OR SUGGEST THAT THE PROPERTY LINES AND RIGHT-OF-WAY LINES SHOWN ON THE MAP ARE ACCURATE, OR THAT ANY OTHER INFORMATION ON THE MAP IS CORRECT. THE COMPANY DOES NOT REPRESENT THAT IT HAS CHECKED THIS MAP FOR ACCU

RIGHT OF WAY AND TRACK MAP
HARRIMAN & NORTHEASTERN R.R. CO.
OPERATED BY THE
HARRIMAN & NORTHEASTERN R.R. CO.
STATION 8595 + 30 TO STATION 8648 + 10
SCALE: 1 IN. = 100 FT. REVISED MAY 1969
OFFICE OF CHIEF ENGINEER ATLANTA GA.
STATIONING REFERS TO I.C.C. INVENTORY CHAINAGE - 1918



073-025