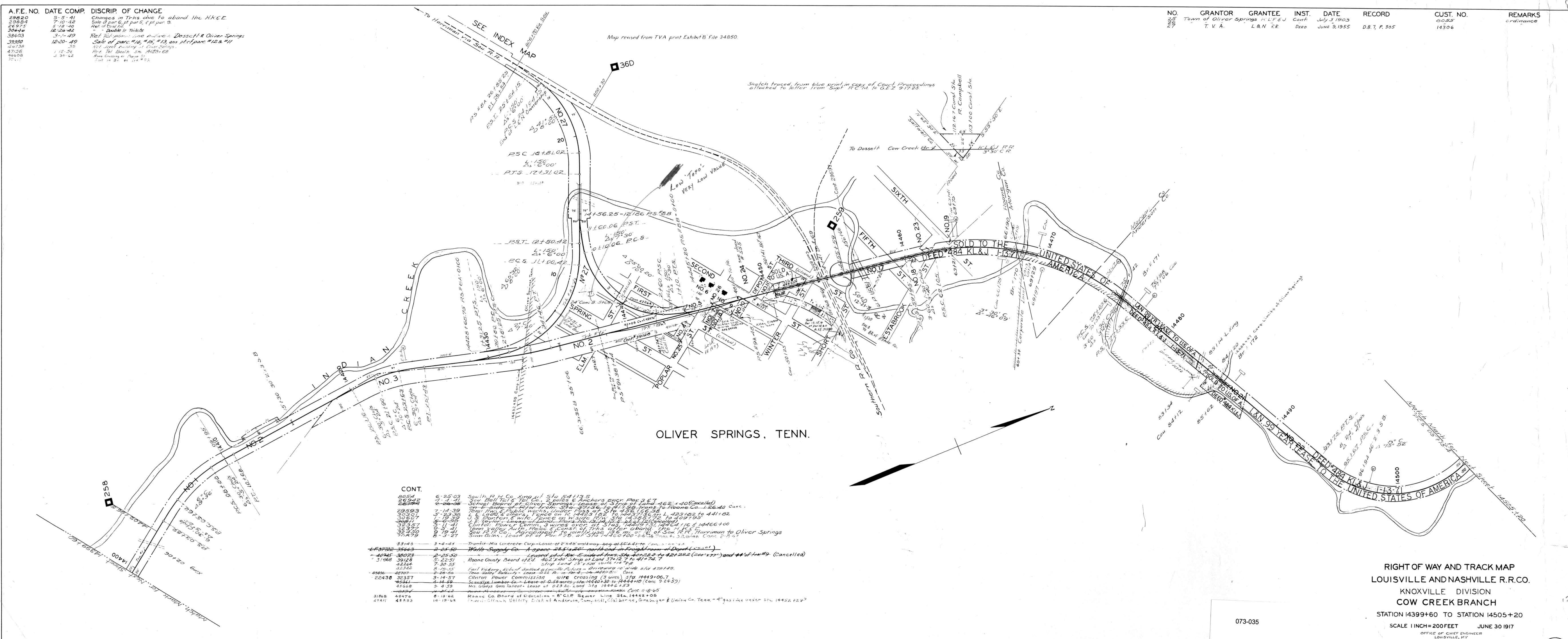


| A.F.E. NO. | DATE COMP. | DISCRIP. OF CHANGE |
|------------|------------|--|
| 29820 | 9-3-41 | Changes in TRHS give to aband the H.K.E. |
| 29824 | 7-10-42 | Sale of part 6, pt par 5, of pt par 9. |
| 26975 | 5-18-40 | Ref of local rd. |
| 30644 | 12-24-42 | " " Double to Thibbs |
| 39403 | 3-1-49 | Ref 2nd parcel line between Dosselt & Over Springs |
| 39380 | 12-20-49 | Sale of part #16, #15, #13 and pt par #12 & #11 |
| 46738 | 5-5 | Ref report drawing of Over Springs |
| 47156 | 1-12-56 | Ref Tel Death Sm 14425-68 |
| 46408 | 3-30-62 | Ref Drawing of Point St |
| 30117 | | Ref to Sm 21 121 #33 |

| NO. | GRANTOR | GRANTEE | INST. | DATE | RECORD | CUST. NO. | REMARKS |
|-----|------------------------|--------------|-------|--------------|----------------|-----------|-----------|
| 25 | Town of Oliver Springs | R.L.F. & J. | Conf | July 3 1903 | | 0555 | |
| 26 | T.V.A. | L. & N. R.R. | Deed | JUNE 9, 1955 | D.B. 7, P. 305 | 14306 | Ordinance |
| 27 | | | | | | | |



Map reissued from TVA print Exhibit B File 34850

Sketches traced from blue print in copy of Court Proceedings attached to letter from Supl. R.C.M. to G.E.Z. 9/17/25

OLIVER SPRINGS, TENN.

CONT.

| | | |
|-------|---------|--|
| 8054 | 6-25-03 | South Fork Co. Xing at Sta 54113.5 |
| 26942 | 4-1-41 | Ch. Bell Tel. & Tel. Co., 2 poles & Anchors engr. Par 3 & 7 |
| 26943 | 4-1-41 | Sch. Board of Oliver Springs - Lease of Strip of Land 462 x 40 (Cancelled) |
| 29593 | 7-14-39 | Lease of land from Sta 37713.6 to Sta 42611.8 to Moore Co. 1.26.40 Canc. |
| 30301 | 5-23-36 | Lease of land from Sta 42611.8 to Sta 4411.82 |
| 30302 | 5-23-36 | Lease of land from Sta 4411.82 to Sta 4411.82 |
| 30303 | 5-23-36 | Lease of land from Sta 4411.82 to Sta 4411.82 |
| 30304 | 5-23-36 | Lease of land from Sta 4411.82 to Sta 4411.82 |
| 30305 | 5-23-36 | Lease of land from Sta 4411.82 to Sta 4411.82 |
| 30306 | 5-23-36 | Lease of land from Sta 4411.82 to Sta 4411.82 |
| 30307 | 5-23-36 | Lease of land from Sta 4411.82 to Sta 4411.82 |
| 30308 | 5-23-36 | Lease of land from Sta 4411.82 to Sta 4411.82 |
| 30309 | 5-23-36 | Lease of land from Sta 4411.82 to Sta 4411.82 |
| 30310 | 5-23-36 | Lease of land from Sta 4411.82 to Sta 4411.82 |
| 30311 | 5-23-36 | Lease of land from Sta 4411.82 to Sta 4411.82 |
| 30312 | 5-23-36 | Lease of land from Sta 4411.82 to Sta 4411.82 |
| 30313 | 5-23-36 | Lease of land from Sta 4411.82 to Sta 4411.82 |
| 30314 | 5-23-36 | Lease of land from Sta 4411.82 to Sta 4411.82 |
| 30315 | 5-23-36 | Lease of land from Sta 4411.82 to Sta 4411.82 |
| 30316 | 5-23-36 | Lease of land from Sta 4411.82 to Sta 4411.82 |
| 30317 | 5-23-36 | Lease of land from Sta 4411.82 to Sta 4411.82 |
| 30318 | 5-23-36 | Lease of land from Sta 4411.82 to Sta 4411.82 |
| 30319 | 5-23-36 | Lease of land from Sta 4411.82 to Sta 4411.82 |
| 30320 | 5-23-36 | Lease of land from Sta 4411.82 to Sta 4411.82 |
| 30321 | 5-23-36 | Lease of land from Sta 4411.82 to Sta 4411.82 |
| 30322 | 5-23-36 | Lease of land from Sta 4411.82 to Sta 4411.82 |
| 30323 | 5-23-36 | Lease of land from Sta 4411.82 to Sta 4411.82 |
| 30324 | 5-23-36 | Lease of land from Sta 4411.82 to Sta 4411.82 |
| 30325 | 5-23-36 | Lease of land from Sta 4411.82 to Sta 4411.82 |
| 30326 | 5-23-36 | Lease of land from Sta 4411.82 to Sta 4411.82 |
| 30327 | 5-23-36 | Lease of land from Sta 4411.82 to Sta 4411.82 |
| 30328 | 5-23-36 | Lease of land from Sta 4411.82 to Sta 4411.82 |
| 30329 | 5-23-36 | Lease of land from Sta 4411.82 to Sta 4411.82 |
| 30330 | 5-23-36 | Lease of land from Sta 4411.82 to Sta 4411.82 |
| 30331 | 5-23-36 | Lease of land from Sta 4411.82 to Sta 4411.82 |
| 30332 | 5-23-36 | Lease of land from Sta 4411.82 to Sta 4411.82 |
| 30333 | 5-23-36 | Lease of land from Sta 4411.82 to Sta 4411.82 |
| 30334 | 5-23-36 | Lease of land from Sta 4411.82 to Sta 4411.82 |
| 30335 | 5-23-36 | Lease of land from Sta 4411.82 to Sta 4411.82 |
| 30336 | 5-23-36 | Lease of land from Sta 4411.82 to Sta 4411.82 |
| 30337 | 5-23-36 | Lease of land from Sta 4411.82 to Sta 4411.82 |
| 30338 | 5-23-36 | Lease of land from Sta 4411.82 to Sta 4411.82 |
| 30339 | 5-23-36 | Lease of land from Sta 4411.82 to Sta 4411.82 |
| 30340 | 5-23-36 | Lease of land from Sta 4411.82 to Sta 4411.82 |
| 30341 | 5-23-36 | Lease of land from Sta 4411.82 to Sta 4411.82 |
| 30342 | 5-23-36 | Lease of land from Sta 4411.82 to Sta 4411.82 |
| 30343 | 5-23-36 | Lease of land from Sta 4411.82 to Sta 4411.82 |
| 30344 | 5-23-36 | Lease of land from Sta 4411.82 to Sta 4411.82 |
| 30345 | 5-23-36 | Lease of land from Sta 4411.82 to Sta 4411.82 |
| 30346 | 5-23-36 | Lease of land from Sta 4411.82 to Sta 4411.82 |
| 30347 | 5-23-36 | Lease of land from Sta 4411.82 to Sta 4411.82 |
| 30348 | 5-23-36 | Lease of land from Sta 4411.82 to Sta 4411.82 |
| 30349 | 5-23-36 | Lease of land from Sta 4411.82 to Sta 4411.82 |
| 30350 | 5-23-36 | Lease of land from Sta 4411.82 to Sta 4411.82 |
| 30351 | 5-23-36 | Lease of land from Sta 4411.82 to Sta 4411.82 |
| 30352 | 5-23-36 | Lease of land from Sta 4411.82 to Sta 4411.82 |
| 30353 | 5-23-36 | Lease of land from Sta 4411.82 to Sta 4411.82 |
| 30354 | 5-23-36 | Lease of land from Sta 4411.82 to Sta 4411.82 |
| 30355 | 5-23-36 | Lease of land from Sta 4411.82 to Sta 4411.82 |
| 30356 | 5-23-36 | Lease of land from Sta 4411.82 to Sta 4411.82 |
| 30357 | 5-23-36 | Lease of land from Sta 4411.82 to Sta 4411.82 |
| 30358 | 5-23-36 | Lease of land from Sta 4411.82 to Sta 4411.82 |
| 30359 | 5-23-36 | Lease of land from Sta 4411.82 to Sta 4411.82 |
| 30360 | 5-23-36 | Lease of land from Sta 4411.82 to Sta 4411.82 |
| 30361 | 5-23-36 | Lease of land from Sta 4411.82 to Sta 4411.82 |
| 30362 | 5-23-36 | Lease of land from Sta 4411.82 to Sta 4411.82 |
| 30363 | 5-23-36 | Lease of land from Sta 4411.82 to Sta 4411.82 |
| 30364 | 5-23-36 | Lease of land from Sta 4411.82 to Sta 4411.82 |
| 30365 | 5-23-36 | Lease of land from Sta 4411.82 to Sta 4411.82 |
| 30366 | 5-23-36 | Lease of land from Sta 4411.82 to Sta 4411.82 |
| 30367 | 5-23-36 | Lease of land from Sta 4411.82 to Sta 4411.82 |
| 30368 | 5-23-36 | Lease of land from Sta 4411.82 to Sta 4411.82 |
| 30369 | 5-23-36 | Lease of land from Sta 4411.82 to Sta 4411.82 |
| 30370 | 5-23-36 | Lease of land from Sta 4411.82 to Sta 4411.82 |
| 30371 | 5-23-36 | Lease of land from Sta 4411.82 to Sta 4411.82 |
| 30372 | 5-23-36 | Lease of land from Sta 4411.82 to Sta 4411.82 |
| 30373 | 5-23-36 | Lease of land from Sta 4411.82 to Sta 4411.82 |
| 30374 | 5-23-36 | Lease of land from Sta 4411.82 to Sta 4411.82 |
| 30375 | 5-23-36 | Lease of land from Sta 4411.82 to Sta 4411.82 |
| 30376 | 5-23-36 | Lease of land from Sta 4411.82 to Sta 4411.82 |
| 30377 | 5-23-36 | Lease of land from Sta 4411.82 to Sta 4411.82 |
| 30378 | 5-23-36 | Lease of land from Sta 4411.82 to Sta 4411.82 |
| 30379 | 5-23-36 | Lease of land from Sta 4411.82 to Sta 4411.82 |
| 30380 | 5-23-36 | Lease of land from Sta 4411.82 to Sta 4411.82 |
| 30381 | 5-23-36 | Lease of land from Sta 4411.82 to Sta 4411.82 |
| 30382 | 5-23-36 | Lease of land from Sta 4411.82 to Sta 4411.82 |
| 30383 | 5-23-36 | Lease of land from Sta 4411.82 to Sta 4411.82 |
| 30384 | 5-23-36 | Lease of land from Sta 4411.82 to Sta 4411.82 |
| 30385 | 5-23-36 | Lease of land from Sta 4411.82 to Sta 4411.82 |
| 30386 | 5-23-36 | Lease of land from Sta 4411.82 to Sta 4411.82 |
| 30387 | 5-23-36 | Lease of land from Sta 4411.82 to Sta 4411.82 |
| 30388 | 5-23-36 | Lease of land from Sta 4411.82 to Sta 4411.82 |
| 30389 | 5-23-36 | Lease of land from Sta 4411.82 to Sta 4411.82 |
| 30390 | 5-23-36 | Lease of land from Sta 4411.82 to Sta 4411.82 |
| 30391 | 5-23-36 | Lease of land from Sta 4411.82 to Sta 4411.82 |
| 30392 | 5-23-36 | Lease of land from Sta 4411.82 to Sta 4411.82 |
| 30393 | 5-23-36 | Lease of land from Sta 4411.82 to Sta 4411.82 |
| 30394 | 5-23-36 | Lease of land from Sta 4411.82 to Sta 4411.82 |
| 30395 | 5-23-36 | Lease of land from Sta 4411.82 to Sta 4411.82 |
| 30396 | 5-23-36 | Lease of land from Sta 4411.82 to Sta 4411.82 |
| 30397 | 5-23-36 | Lease of land from Sta 4411.82 to Sta 4411.82 |
| 30398 | 5-23-36 | Lease of land from Sta 4411.82 to Sta 4411.82 |
| 30399 | 5-23-36 | Lease of land from Sta 4411.82 to Sta 4411.82 |
| 30400 | 5-23-36 | Lease of land from Sta 4411.82 to Sta 4411.82 |

073-035

RIGHT OF WAY AND TRACK MAP
LOUISVILLE AND NASHVILLE R.R. CO.
KNOXVILLE DIVISION
COW CREEK BRANCH
STATION 14399+60 TO STATION 14505+20
SCALE 1 INCH = 200 FEET JUNE 30 1917
OFFICE OF CHIEF ENGINEER
LOUISVILLE, KY