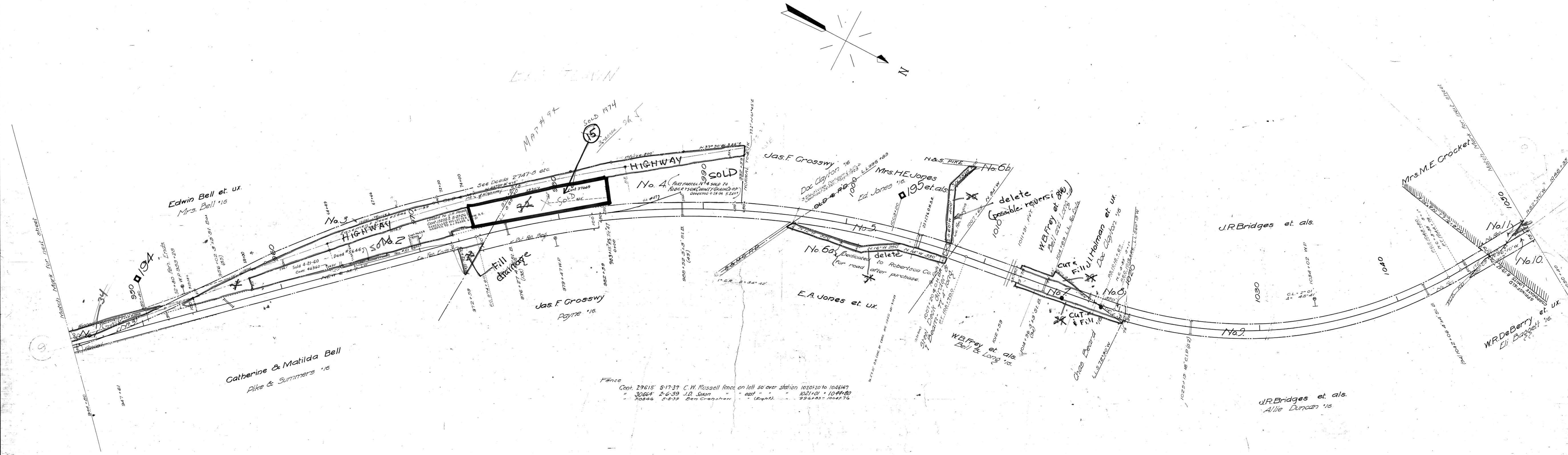
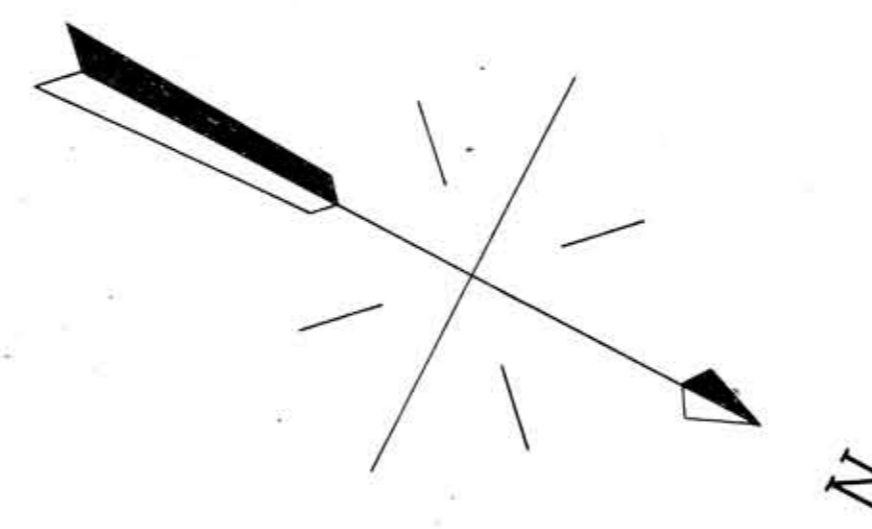


A.F.E. No.	Date Comp.	Description of change.
3865	7-31-25	Const. of O.H. Highway Br. Sta. 1005127
3954	3-31-24	Const. of F.P. #27 375, 382145-4-306, 534 Ac. Land Pl. for 4
52429	4-21-60	Sale of pt. Parcel 2
52430	3-30-60	CONSTR. TRK. #31.



- Deed 5646 - 6-1-39 Easement for Highway 1001 to County of Robertson Sta 944180-963180 and 993180-992159
- DATE 97139 10-11-50 CUMBERLAND ELEC. MEMB. CORP. - WIRE LINE STA 1005127
- L.F. 40602 - 3-24-49 Garden Club of Springfield Lease land 4.25440 on RW S.W. side Sta 777145 to 783170 - CONC. 10-25-67
- 39556 - 4-13-54 Robertson County Gravel Coop. Const. 1/2 mi. Sta 383140
- 4433 - 8-8-58 Springfield Broadcasting Co. Lease of signboard space Sta. 955+27 - CONC. 8-8-62
- 45078 - 46360 3-25-60 Robertson Farmers Cooperative 12' Circular driveway at Sta. 963+17
- 46229 3-5-65 Robertson Farmers Cooperative - Bldg. encroachment on r.o.w.
- 53471 11-27-67 Springfield Industrial Dev. Corp. - Const. track N556 - User Midland Chemical Corp. 11-27-67

Fence
 Cont. 29615 5-17-37 C.W. Russell fence on left so over station 1020+20 to 1046+67
 " 30664 2-6-39 J.D. Saxon " east " " 1021+01 to 1044+80
 " 30846 5-8-39 Ben Grayson " (Right) " 996+83 to 1004+76

Sheet No. 10 of 20 of Henderson Division from Survey Station
 944180 to Survey Station 1050+40
 Valuation Engineer

RIGHT OF WAY AND TRACK MAP
 LOUISVILLE AND NASHVILLE R. R. CO.
 HENDERSON DIVISION
 STATION 944+80 TO STATION 1050+40
 SCALE 1 INCH = 200 FT. JUNE 30, 1917.

074-005

130
10