

Table with columns: A.P. No., Date Comp., Description of Change. It contains a detailed log of engineering changes and track modifications, such as 'Install of m.w. of 5. Main St', 'Shift and extending trk # 21', and 'Relief of Main St Hwy # 11'.

L.F. Cont. No. Date Description
25178 33411 7-19-50 Draughon Bros. Oil Co., 144 sq. ft. of land, near sec. house, for driveway.

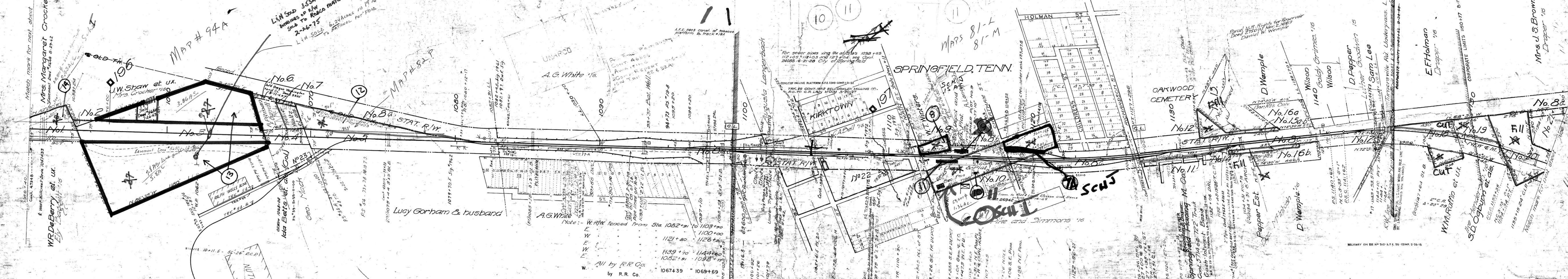


Table listing legal notices and easements, including: 'L.F. 6168 Cont. 30253 8-2-51', 'L.F. 40613 3-17-51', 'L.F. 40614 3-17-51', and 'L.F. 40615 3-17-51'. It details various land transactions and utility easements.

RIGHT OF WAY AND TRACK MAP
LOUISVILLE AND NASHVILLE R. R. CO.
HENDERSON DIVISION
STATION 1050+40 TO STATION 1156+00
SCALE 1" = 200 FT.
JUNE 30, 1917.
Includes a signature line for the Valuation Engineer and a date stamp.

074-006

Sheet 78910, 11, 12, 13, 14

SPRINGFIELD