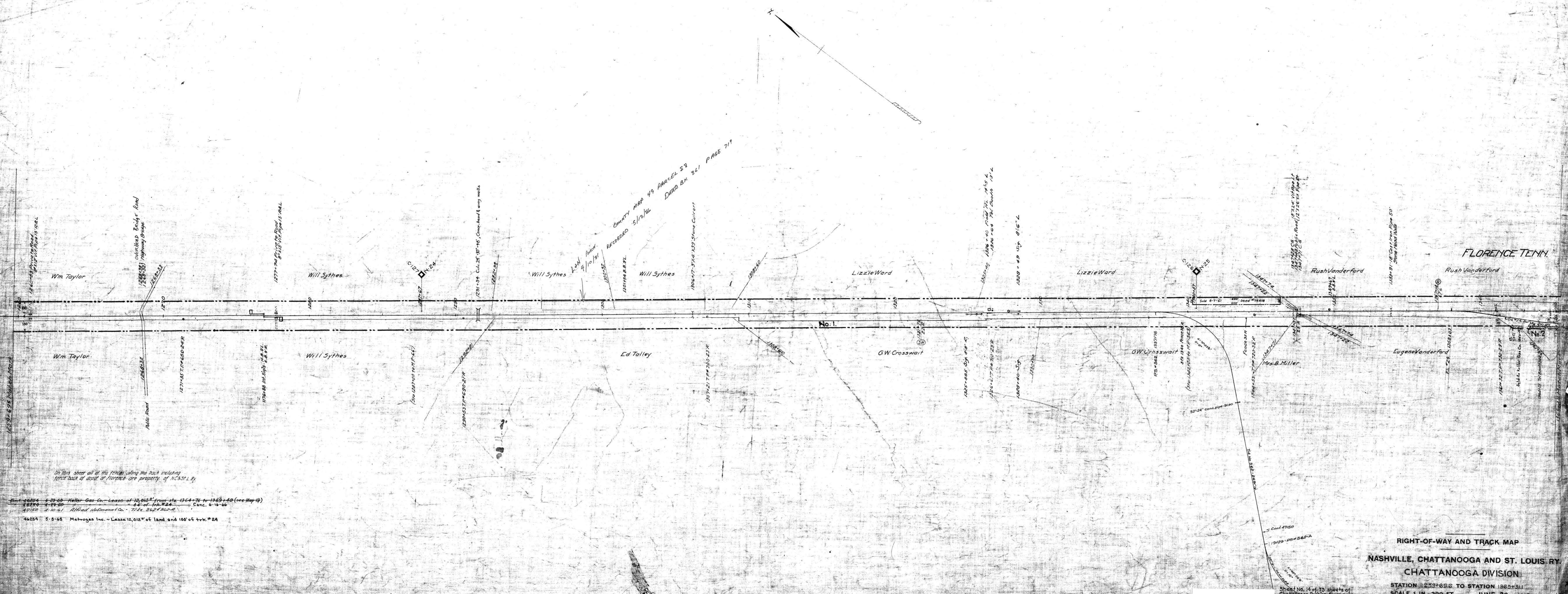


5113 9-16-29 Rat. Trk. #23 for C.T.C.
 5362 8-16-27 Cont. to 74, 96, 2
 5375 8-7-26 Sale of pt. par. #1
 5410 1-10-27 Ex. 1 & 2 (S)

NO.	GRANTOR	GRANTEE	INSTRUMENT	DATE	RECORD	COST. NO.	REMARKS
1			None				See Note 1
2			None				See Note 2

NOTE 1- Quarter width claimed under decisions of Tennessee Courts.
 NOTE 2- Title by possession.



On this sheet all of the fences along the track including fence back of wood or fences are property of N.C.S.R.R.

Cont. 46254 4-23-26 Keller Gas Co. Lease of 12,012' from Sta. 1364+76 to 1363+40 (see Map 13)
 47120 4-10-26 Alfred Hoffmann Co. Trs. 3621362-2
 46254 5-5-25 Metrolgas Inc. Lease 12,012' of land and 100' of trk. #24

RIGHT-OF-WAY AND TRACK MAP
NASHVILLE, CHATTANOOGA AND ST. LOUIS RY
CHATTANOOGA DIVISION

STATION 1253+62.6 TO STATION 1363+31.1
 SCALE 1 IN. = 200 FT. JUNE 30, 1916

Sheet No. 14 of 75 sheets of
 City and Suburban Division
 Station 1253+62.6 to Survey Station
 1363+31.1

OFFICE OF CHIEF ENGINEER
 NASHVILLE, TENN.
 J. H. [Signature]
 Chief Engineer

M.P. 235 to 255

075-006

RUTHERFORD CO. TENN.