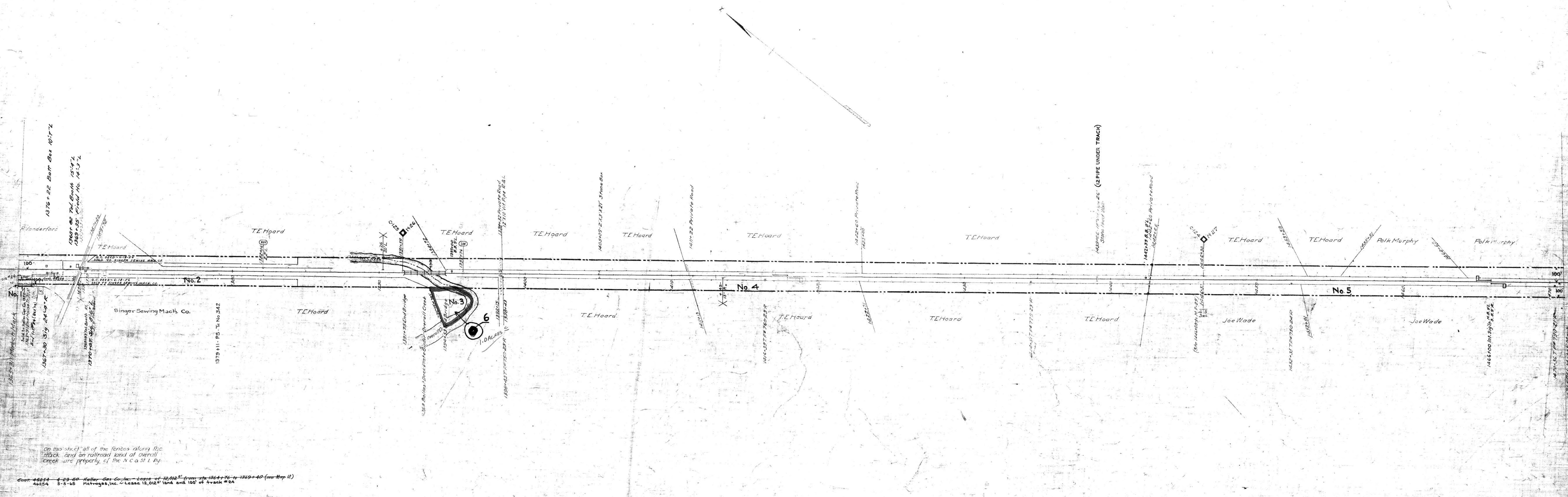


AFE	DATE	DESCRIPTION
37919 GT193	3-30-65 11-10-67	Ret. pass. sholder at FLORENCE TENN. Dist. 1/4 mi. # 24 (50')

No.	GRANTOR	GRANTEE	INSTRUMENT	DATE	RECORD	COPY NO.	REMARKS
1			None				See Note 1
2			None				See Note 1
3	Mrs. A. B. Vanzo Thos. Ford	N. C. & St. L. Ry. N. & C. R. & Co.	Deed	May 13, 1913	DB 55-515-June 20, 1913	1073	
4			Supreme Court Decree	Dec. 1893	Enrollment Book 1852-53	2692	See Note 2
5			None				See Note 2

NOTE 1- Title by possession
 Note 2- Charter with claims under decisions of Tennessee Courts.
 Note 3- Land for creek change and borrow. Grantees agree to build a stone wall along creek to prevent occur.



On this sheet all of the fences along the track and on railroad land of Overall Creek are property of the N. C. & St. L. Ry.

Cont. 46254 4-29-60 Keller Gas Co., Inc. - Lease of 12,012 sq. ft. from Sta. 1364+76 to 1369+40 (see Map 12)
 46254 5-5-65 Petrogas, Inc. - Lease 12,012 sq. ft. land and 100' of track #24

RIGHT-OF-WAY AND TRACK MAP
 NASHVILLE, CHATTANOOGA AND ST. LOUIS RY.
 CHATTANOOGA DIVISION

STATION 1365+31 TO STATION 1470+96.1
 SCALE, 1 IN. = 200 FT. JUNE 30, 1916

Sheet No. 15 of 73 sheets of
 Chattanooga Division from survey
 Station 1365+31 to Survey Station
 1470+96.1
 J. H. B. [Signature]
 Station Engineer

M.P. 25.5 to 27.5