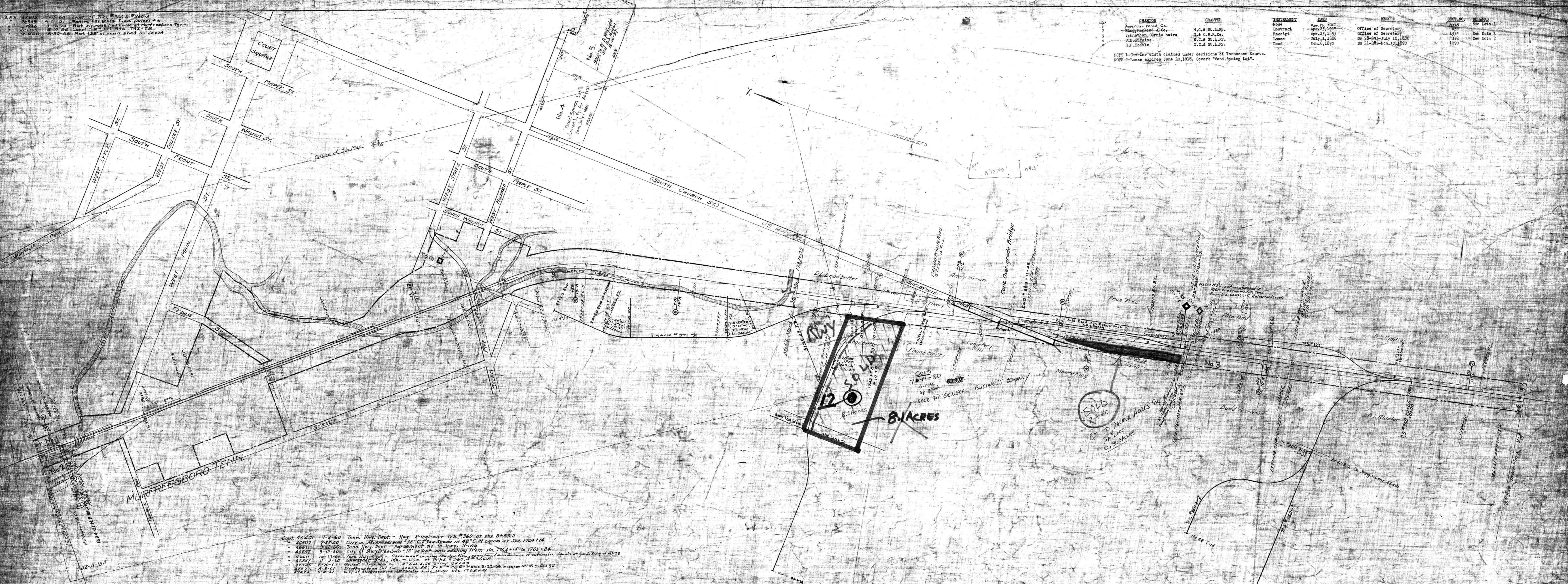


1357 7-25-60 Cont'd. Tr. #360 & #360A  
 39549 4-21-61 Ret. 51 acres from parcel #3  
 37944 3-30-61 Ret. 20 acres from parcel #3  
 62084 8-10-61 Cont'd. Tr. #360, 176 & 175  
 31022 4-30-61 Ret. 128 of train shed on depot

NO.	GRANTOR	GRANTEE	INSTRUMENT	DATE	RECORD	CURT. NO.	REMARKS
1	American Fuel Co.	N.C. & St. L. Ry.	Contract	Apr. 13, 1907	Office of Secretary	2015	See Note 1
2	Wingfield & Co.	N.C. & St. L. Ry.	Receipt	Apr. 25, 1907	Office of Secretary	1354	See Note 1
3	Johnston, Girkin heirs	N.C. & St. L. Ry.	Lease	July 1, 1906	DB 28-293-July 12, 1906	373	See Note 2
4	O. Buggins	N.C. & St. L. Ry.	Lease	Jan. 9, 1890	DB 31-382-Jan. 30, 1890	1090	

NOTE 1-Charter which claimed under decisions of Tennessee Courts.  
 NOTE 2-Lease expires June 30, 1918. Cover "Sand Spring Lot".



- Cont. 46401 7-8-60 Tenn. Hwy. Dept. - Hwy. X-ing over Tr. #360 at Sta. 8+82.2
- 46507 7-27-60 City of Murfreesboro - 12" C.I. Sewer in AB C.M. casing at Sta. 1764+14
- 46611 3-30-60 Tenn. Hwy. Dept. - Agreement, as to Hwy. X-ing
- 46887 3-12-60 City of Murfreesboro - 12" sewer sewer collecting from Sta. 1764+14 to 1765+24
- 46411 10-27-60 Tenn. Hwy. Dept. - Agreement covering construction, operation & maintenance of automatic signals at grade X-ing at MP 53
- 46887 11-3-60 Shawnee Bros., Inc. - Use of Tr. #360
- 47520 8-20-61 South-Central Ry. Co. - 6" gas line X-ing 2+12.3
- 47222 8-2-61 Earthquake on Dr. Gas House, 881 Tr. #286 - Memo 3-22-60 increase 44' at 1+88.50
- 47472 8-2-61 City of Murfreesboro - 12" sewer sewer Sta. 1764+14

See MAP 224 for fence notes from 5/8/1882 to 3/1/1911 from Sta. 1764+14 to Sta. 1787+33.4 the fence along the line is the property of the N.C. & St. L. Ry.

RIGHT-OF-WAY AND TRACK MAP  
 NASHVILLE, CHATTANOOGA AND ST. LOUIS RY.  
 CHATTANOOGA DIVISION  
 STATION 1682+183 TO STATION 1787+334  
 SCALE: 1 IN. = 200 FT. JUNE 30, 1916  
 SHEET NO. 12 OF 75 SHEETS OF CHATTANOOGA DIVISION FROM SURVEY OF 1874-75 TO SURVEY 1917-1918  
 OFFICE OF CIVIL ENGINEER NASHVILLE, TENN.  
 M.P. 31.5 to 33.5

075-010