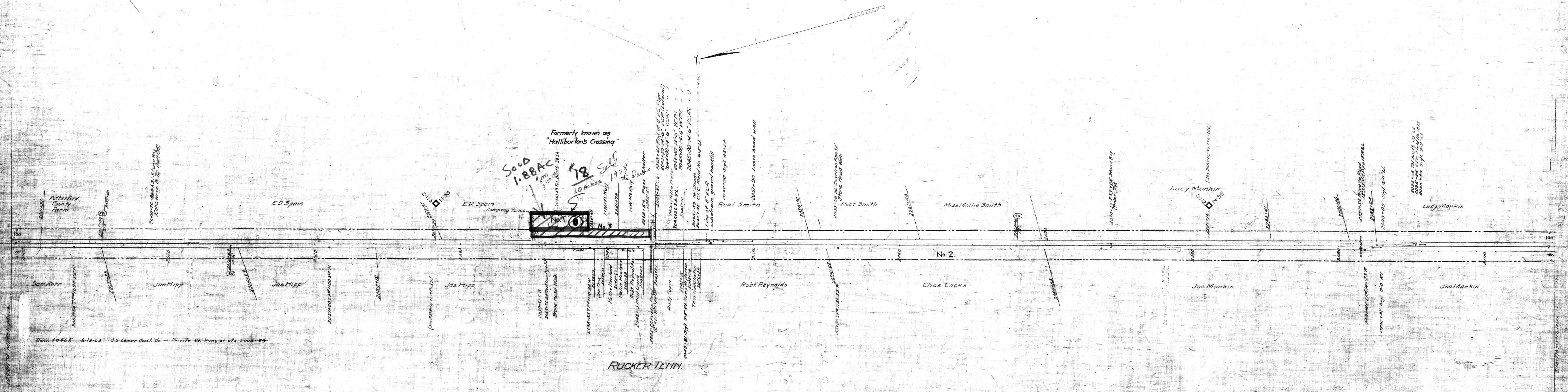


NOTE 1- Charter with claims under decisions of Tennessee Courts.



On this sheet all the fences along the track are property of the N.C. & St. L. Ry. except two short stretches on the north of Rucker from 2037+10 to 2039+17 and from 2040+67 to 2042+47

RUCKER TENN.

RUTHERFORD CO. TENN.

075-014

Sheet No. 22 of 73 sheets of Chattanooga Division from Survey Station 1999+178 to Station 2104+778

RIGHT-OF-WAY AND TRACK MAP  
NASHVILLE, CHATTANOOGA AND ST. LOUIS RY.  
CHATTANOOGA DIVISION  
STATION 1999+178 TO STATION 2104+778  
SCALE 1 IN. = 200 FT. JUNE 30, 1916  
M.P. 374 to 394