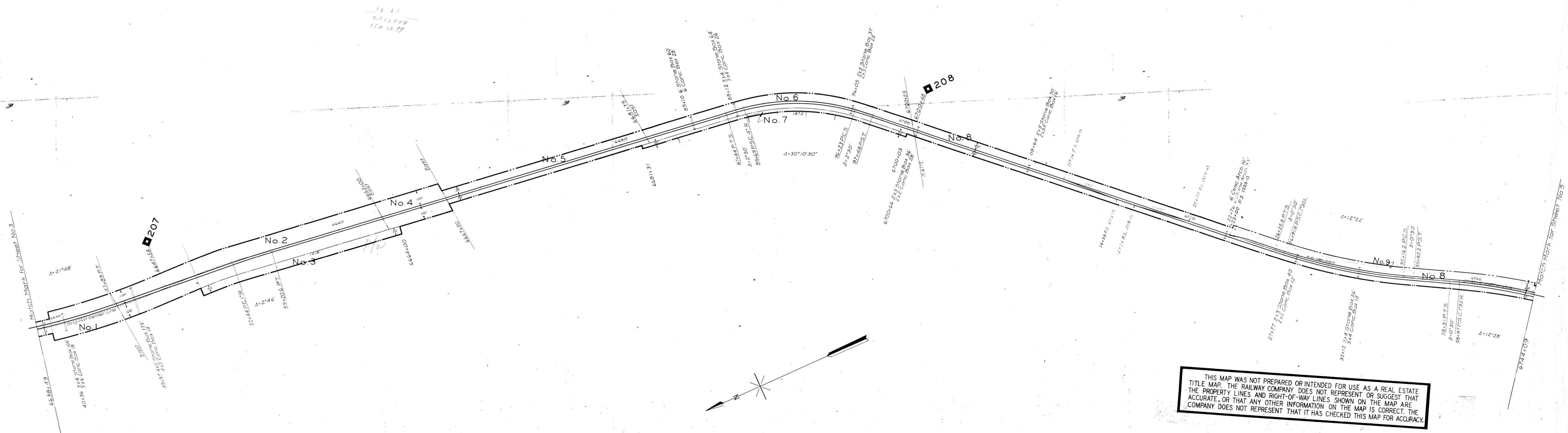


SCOTT COUNTY, TENN.



THIS MAP WAS NOT PREPARED OR INTENDED FOR USE AS A REAL ESTATE TITLE MAP. THE RAILWAY COMPANY DOES NOT REPRESENT OR SUGGEST THAT THE PROPERTY LINES AND RIGHT-OF-WAY LINES SHOWN ON THE MAP ARE ACCURATE, OR THAT ANY OTHER INFORMATION ON THE MAP IS CORRECT. THE COMPANY DOES NOT REPRESENT THAT IT HAS CHECKED THIS MAP FOR ACCURACY.

TRACK NUMBERS REFER TO I.C.C. LIST NUMBERS
RIGHT-OF-WAY AND TRACK MAP
CINCINNATI SOUTHERN RAILWAY
 Operated by
THE CINCINNATI, NEW ORLEANS & TEXAS PACIFIC RY. CO.

STATION 6638+49 TO STATION 6744+09
 SCALE: 1 IN. = 200 FT. DECEMBER 31, 1927

076-004

Office of Special Engineer
 Washington, D. C.

TAKING REFERS TO I.C.C. INVENTORY CHAINAGE - 1918
Tracks Correct to Dec. 31, 1927