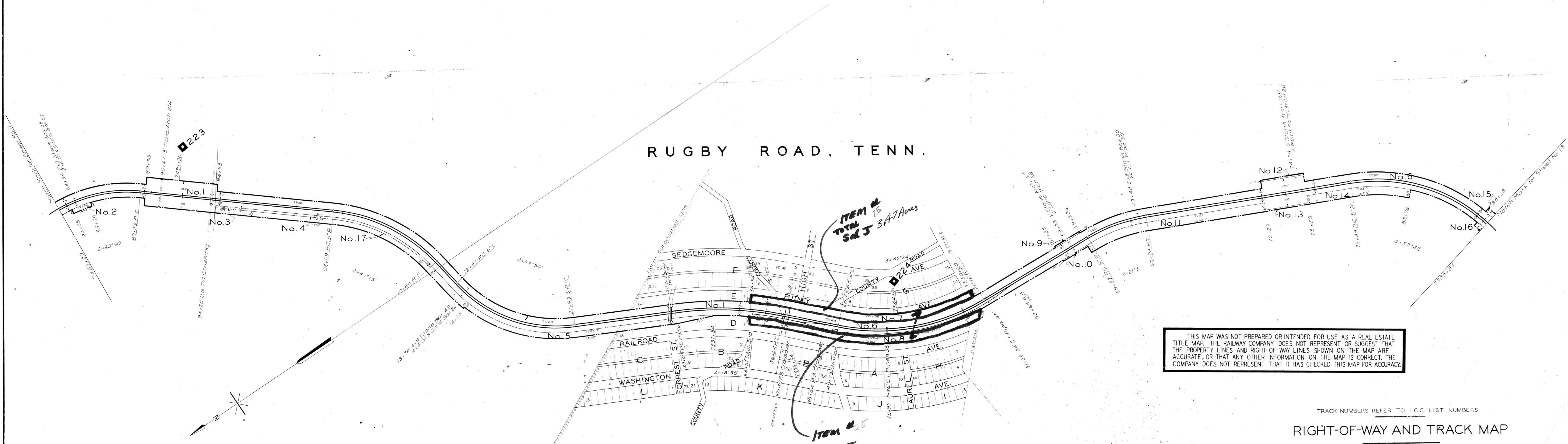


SCOTT COUNTY, TENN.

RUGBY ROAD, TENN.



THIS MAP WAS NOT PREPARED OR INTENDED FOR USE AS A REAL ESTATE TITLE MAP. THE RAILWAY COMPANY DOES NOT REPRESENT OR SUGGEST THAT THE PROPERTY LINES AND RIGHT-OF-WAY LINES SHOWN ON THE MAP ARE ACCURATE, OR THAT ANY OTHER INFORMATION ON THE MAP IS CORRECT. THE COMPANY DOES NOT REPRESENT THAT IT HAS CHECKED THIS MAP FOR ACCURACY.

TRACK NUMBERS REFER TO I.C.C. LIST NUMBERS

RIGHT-OF-WAY AND TRACK MAP

CINCINNATI SOUTHERN RAILWAY

Operated by

THE CINCINNATI, NEW ORLEANS & TEXAS PACIFIC RY. CO.

STATION 7483+29 TO STATION 7588+89
SCALE: 1 IN. = 200 FT. DECEMBER 31, 1927

Office of Special Engineer
Washington, D. C.

076-014

STATIONING REFERS TO I.C.C. INVENTORY CHAINAGE-1918

