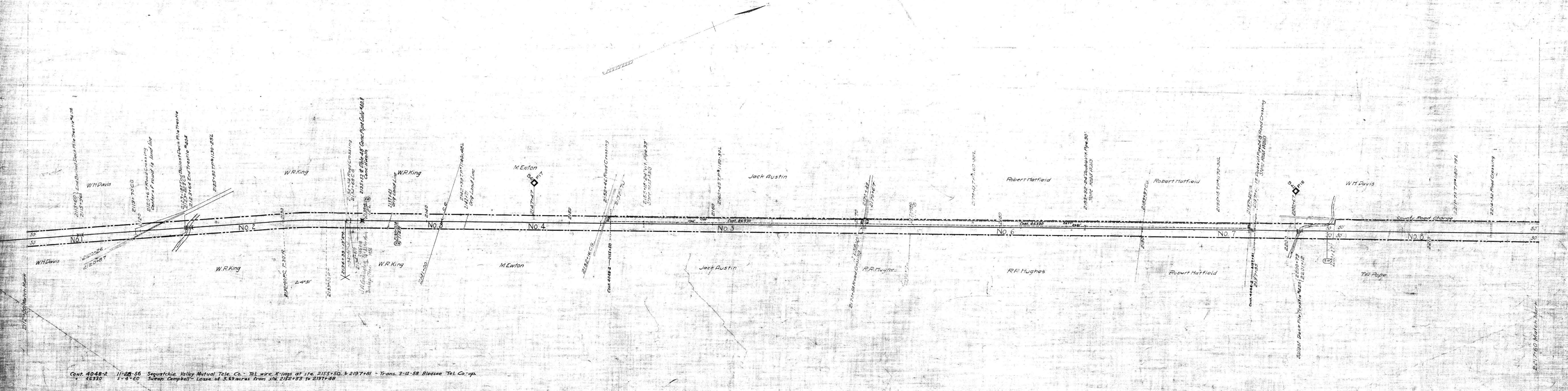


NO.	GRANTOR	GRANTEE	INSTRUMENT	DATE	RECORD	SHEET NO.	REMARKS
1	Susan Heets	N.C. & St. L. Ry.	Deed	May 12, 1890	DB E-399-Dec. 13, 1890	65	
2	Jack Testors et al by C.H. Carpenter, C.C. Clerk.	N.C. & St. L. Ry.	Condemnation	Nov. 16, 1890	DB E-400-Dec. 10, 1890	66	
3	Joseph Hester	N.C. & St. L. Ry.	Deed	May 24, 1890	DB E-401-Dec. 11, 1890	67	5/8 interest abandoned
4	W. Burton	N.C. & St. L. Ry.	Deed	May 24, 1890	DB E-393-Dec. 15, 1890	68	
5	Blackstone Elliott et al by T.K. Thaxton C.C. Clerk.	N.C. & St. L. Ry.	Condemnation	Dec. 12, 1890	DB E-415-Dec. 20, 1890	66	1/6 interest condemned
6	Jack Testors et al by T.K. Thaxton C.C. Clerk.	N.C. & St. L. Ry.	Condemnation	Dec. 12, 1890	DB E-419-Dec. 20, 1890	65	
7	Thomas Hinton	N.C. & St. L. Ry.	Deed	May 23, 1890	DB E-409-Dec. 17, 1890	64	
8	John Hester	N.C. & St. L. Ry.	Deed	May 11, 1890	DB E-413-Dec. 19, 1890	63	
9	Joseph Hester	N.C. & St. L. Ry.	Deed	May 11, 1890	DB E-405-Dec. 19, 1890	62	



Cont. 4048-2 11-28-56 Sequatchie Valley Mutual Tel. Co. - Tel. wire X'ings at sta. 2155+50 & 2197+81 - Trans. 3-12-58 Bledsoe Tel. Co.-op.
46330 5-4-60 Supt. Campbell - Lease of 3.89 acres from sta. 2152+33 to 2197+48

106-D-21

SEQUATCHIE CO. TENN.

077-007

RIGHT-OF-WAY AND TRACK MAP
NASHVILLE, CHATTANOOGA AND ST. LOUIS RY.
SEQUATCHIE VALLEY BRANCH
STATION 2112+00 TO STATION 2217+60
SCALE: 1 IN. = 200 FT. JUNE 30, 1916

Sheet No. 22 of 31 sheets of
 Sequatchie Valley Branch from
 survey station 212+00 to survey
 station 2217+60

M.P. 40.3 to 42.3