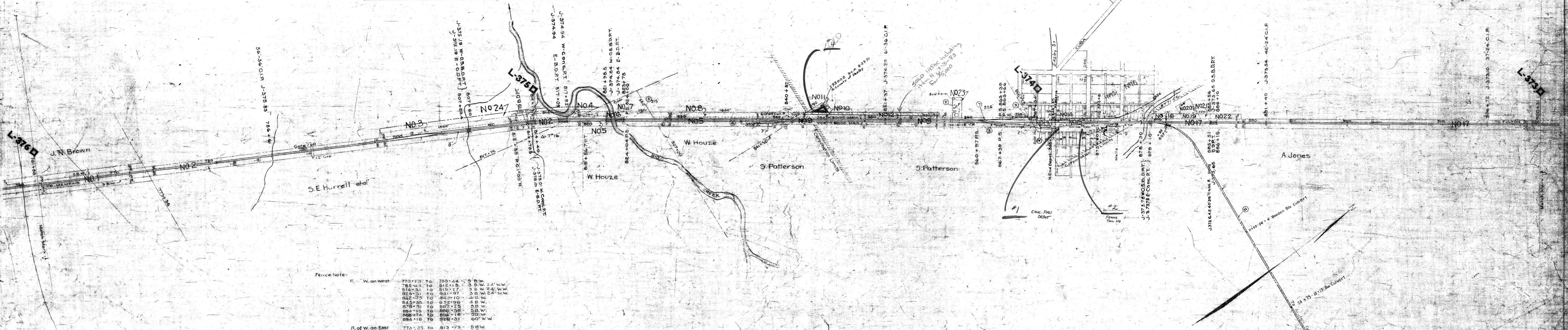


No.	Grantor	Grantee	Instr.	Date	Record	Dist. No.	Remarks
1	J. N. Brown & wf	W & M R R Co	W.D.	12-2-72	90-521 92-42	12-24-72 1-10-73	34
2	S. E. Harrell et al.	Miss. Riv. R.R. Co.	R/W	8-30-69			32
3	S. E. Harrell et al. H. M. Meek	Miss. Riv. R.R. Co. C. ST. L. & N. O. R. R. Co.	Agmt W.D.	8-20-69 6-4-03	315-491	7-10-03	32 33
4	H. M. Moon	C. ST. L. & N. O. R. R. Co.	W.D.	6-4-03	315-491	7-10-03	33
5	W. House & wf	Miss. Riv. R.R. Co.	R/W	7-5-69			30
6	W. House & wf H. M. Bolton & wf	Miss. Riv. R.R. Co. C. ST. L. & N. O. R. R. Co.	Agmt W.D.	7-5-69 5-21-03	313-431	6-6-03	30 31
7	H. M. Bolton & wf	C. ST. L. & N. O. R. R. Co.	W.D.	5-21-03	313-431	6-6-03	31
8	W. House & wf J. B. Andrews Gdn. of L. Andrews	Miss. Riv. R.R. Co. C. ST. L. & N. O. R. R. Co.	R/W W.D.	7-5-69 6-16-03			30 29
9	S. Patterson	Miss. Riv. R.R. Co.	R/W	7-22-69			25
10	S. Patterson F. G. Nelson & wf	Miss. Riv. R.R. Co. C. ST. L. & N. O. R. R. Co.	Agmt W.D.	7-22-69 6-3-03	318-161	11-28-03	25 27
11	F. G. Nelson & wf	C. ST. L. & N. O. R. R. Co.	W.D.	6-3-03	318-159	11-28-03	28
12	S. Patterson W. R. Patterson	Miss. Riv. R.R. Co. C. ST. L. & N. O. R. R. Co.	R/W W.D.	7-22-69 5-21-03	313-430	6-6-03	25 26

Dist. No.	Work	Description	Date
1	2878	See Dist. No. 2878	Mar. 1911
2	2879	See Dist. No. 2879	Mar. 1911
3	2880	See Dist. No. 2880	Mar. 1911
4	2881	See Dist. No. 2881	Mar. 1911
5	2882	See Dist. No. 2882	Mar. 1911
6	2883	See Dist. No. 2883	Mar. 1911
7	2884	See Dist. No. 2884	Mar. 1911
8	2885	See Dist. No. 2885	Mar. 1911
9	2886	See Dist. No. 2886	Mar. 1911
10	2887	See Dist. No. 2887	Mar. 1911
11	2888	See Dist. No. 2888	Mar. 1911
12	2889	See Dist. No. 2889	Mar. 1911
13	2890	See Dist. No. 2890	Mar. 1911
14	2891	See Dist. No. 2891	Mar. 1911
15	2892	See Dist. No. 2892	Mar. 1911
16	2893	See Dist. No. 2893	Mar. 1911
17	2894	See Dist. No. 2894	Mar. 1911
18	2895	See Dist. No. 2895	Mar. 1911
19	2896	See Dist. No. 2896	Mar. 1911
20	2897	See Dist. No. 2897	Mar. 1911
21	2898	See Dist. No. 2898	Mar. 1911
22	2899	See Dist. No. 2899	Mar. 1911
23	2900	See Dist. No. 2900	Mar. 1911
24	2901	See Dist. No. 2901	Mar. 1911
25	2902	See Dist. No. 2902	Mar. 1911
26	2903	See Dist. No. 2903	Mar. 1911
27	2904	See Dist. No. 2904	Mar. 1911
28	2905	See Dist. No. 2905	Mar. 1911
29	2906	See Dist. No. 2906	Mar. 1911
30	2907	See Dist. No. 2907	Mar. 1911
31	2908	See Dist. No. 2908	Mar. 1911
32	2909	See Dist. No. 2909	Mar. 1911
33	2910	See Dist. No. 2910	Mar. 1911
34	2911	See Dist. No. 2911	Mar. 1911
35	2912	See Dist. No. 2912	Mar. 1911
36	2913	See Dist. No. 2913	Mar. 1911
37	2914	See Dist. No. 2914	Mar. 1911
38	2915	See Dist. No. 2915	Mar. 1911
39	2916	See Dist. No. 2916	Mar. 1911
40	2917	See Dist. No. 2917	Mar. 1911
41	2918	See Dist. No. 2918	Mar. 1911
42	2919	See Dist. No. 2919	Mar. 1911
43	2920	See Dist. No. 2920	Mar. 1911
44	2921	See Dist. No. 2921	Mar. 1911
45	2922	See Dist. No. 2922	Mar. 1911
46	2923	See Dist. No. 2923	Mar. 1911
47	2924	See Dist. No. 2924	Mar. 1911
48	2925	See Dist. No. 2925	Mar. 1911
49	2926	See Dist. No. 2926	Mar. 1911
50	2927	See Dist. No. 2927	Mar. 1911
51	2928	See Dist. No. 2928	Mar. 1911
52	2929	See Dist. No. 2929	Mar. 1911
53	2930	See Dist. No. 2930	Mar. 1911
54	2931	See Dist. No. 2931	Mar. 1911
55	2932	See Dist. No. 2932	Mar. 1911
56	2933	See Dist. No. 2933	Mar. 1911
57	2934	See Dist. No. 2934	Mar. 1911
58	2935	See Dist. No. 2935	Mar. 1911
59	2936	See Dist. No. 2936	Mar. 1911
60	2937	See Dist. No. 2937	Mar. 1911
61	2938	See Dist. No. 2938	Mar. 1911
62	2939	See Dist. No. 2939	Mar. 1911
63	2940	See Dist. No. 2940	Mar. 1911
64	2941	See Dist. No. 2941	Mar. 1911
65	2942	See Dist. No. 2942	Mar. 1911
66	2943	See Dist. No. 2943	Mar. 1911
67	2944	See Dist. No. 2944	Mar. 1911
68	2945	See Dist. No. 2945	Mar. 1911
69	2946	See Dist. No. 2946	Mar. 1911
70	2947	See Dist. No. 2947	Mar. 1911
71	2948	See Dist. No. 2948	Mar. 1911
72	2949	See Dist. No. 2949	Mar. 1911
73	2950	See Dist. No. 2950	Mar. 1911
74	2951	See Dist. No. 2951	Mar. 1911
75	2952	See Dist. No. 2952	Mar. 1911
76	2953	See Dist. No. 2953	Mar. 1911
77	2954	See Dist. No. 2954	Mar. 1911
78	2955	See Dist. No. 2955	Mar. 1911
79	2956	See Dist. No. 2956	Mar. 1911
80	2957	See Dist. No. 2957	Mar. 1911
81	2958	See Dist. No. 2958	Mar. 1911
82	2959	See Dist. No. 2959	Mar. 1911
83	2960	See Dist. No. 2960	Mar. 1911
84	2961	See Dist. No. 2961	Mar. 1911
85	2962	See Dist. No. 2962	Mar. 1911
86	2963	See Dist. No. 2963	Mar. 1911
87	2964	See Dist. No. 2964	Mar. 1911
88	2965	See Dist. No. 2965	Mar. 1911
89	2966	See Dist. No. 2966	Mar. 1911
90	2967	See Dist. No. 2967	Mar. 1911
91	2968	See Dist. No. 2968	Mar. 1911
92	2969	See Dist. No. 2969	Mar. 1911
93	2970	See Dist. No. 2970	Mar. 1911
94	2971	See Dist. No. 2971	Mar. 1911
95	2972	See Dist. No. 2972	Mar. 1911
96	2973	See Dist. No. 2973	Mar. 1911
97	2974	See Dist. No. 2974	Mar. 1911
98	2975	See Dist. No. 2975	Mar. 1911
99	2976	See Dist. No. 2976	Mar. 1911
100	2977	See Dist. No. 2977	Mar. 1911

No.	Grantor	Grantee	Instr.	Date	Record	Dist. No.	Remarks
13	S. W. Lyon	Miss. Riv. R.R. Co.	Agmt	7-5-69			24
14	S. W. Lyon	Miss. Riv. R.R. Co.	R/W	7-5-69			24
15	S. W. Lyon	Miss. Riv. R.R. Co.	Agmt	7-5-69			24
16			Power				
17	A. Jones	Miss. Riv. R.R. Co.	R/W	7-27-69			16
18	A. Jones	Miss. Riv. R.R. Co.	Agmt	7-27-69			16
19	A. Jones O. E. Witherington et al.	Miss. Riv. R.R. Co. C. ST. L. & N. O. R. R. Co.	R/W W.D.	7-27-69 5-23-03	313-416	6-6-03	16 23
20	A. Jones O. E. Witherington et al.	Miss. Riv. R.R. Co. C. ST. L. & N. O. R. R. Co.	R/W W.D.	7-27-69 1-8-04	325-316 331-283	3-9-04	16 21
21	O. E. Witherington	C. ST. L. & N. O. R. R. Co.	Q.C.D.	1-8-04	331-283	3-9-04	22
22	O. E. Witherington	C. ST. L. & N. O. R. R. Co.	Q.C.D.	1-8-04	331-283	3-9-04	22
23	A. Jones S. Patterson	Miss. Riv. R.R. Co. C. ST. L. & N. O. R. R. Co.	R/W W.D.	7-27-69 7-22-03	313-433	6-6-03	16 20
24	T. V. Goss & Wife Annie L. Bolten & Hub	C. ST. L. & N. O. R. R. Co. C. ST. L. & N. O. R. R. Co.	W.D. W.D.	10-4-17 10-4-20	681-228 779-23	11-6-17 11-4-20	191 243



Fence Note:

R. of W. on West	775+13 to 795+44	5 B.W.
	795+44 to 815+15	3 B.W. 24' W.W.
	815+15 to 815+27	3 B.W. 24' W.W.
	815+27 to 841+97	3 B.W. 24' W.W.
	841+97 to 842+75	1 B.W.
	842+75 to 852+99	4 B.W.
	852+99 to 852+56	3 B.W.
	852+56 to 866+58	5 B.W.
	866+58 to 894+16	60' W.W.
	894+16 to 920+31	60' W.W.
R. of W. on East	773+35 to 813+75	5 B.W.
	813+75 to 822+02	5 B.W.
	822+02 to 840+50	5 B.W.
	840+50 to 851+98	5 B.W.
	851+98 to 856+40	5 B.W.
	856+40 to 894+16	60' W.W.
	894+16 to 920+31	60' W.W.

RIGHT-OF-WAY AND TRACK MAP
CHICAGO, ST. LOUIS & NEW ORLEANS R.R.
OPERATED BY THE
ILLINOIS CENTRAL RAILROAD
WOODSTOCK TO TENN. KY STATE LINE
STATION 227+00 TO STATION 229+31
M. P. 1-376 TO M. P. 1-373

079-013