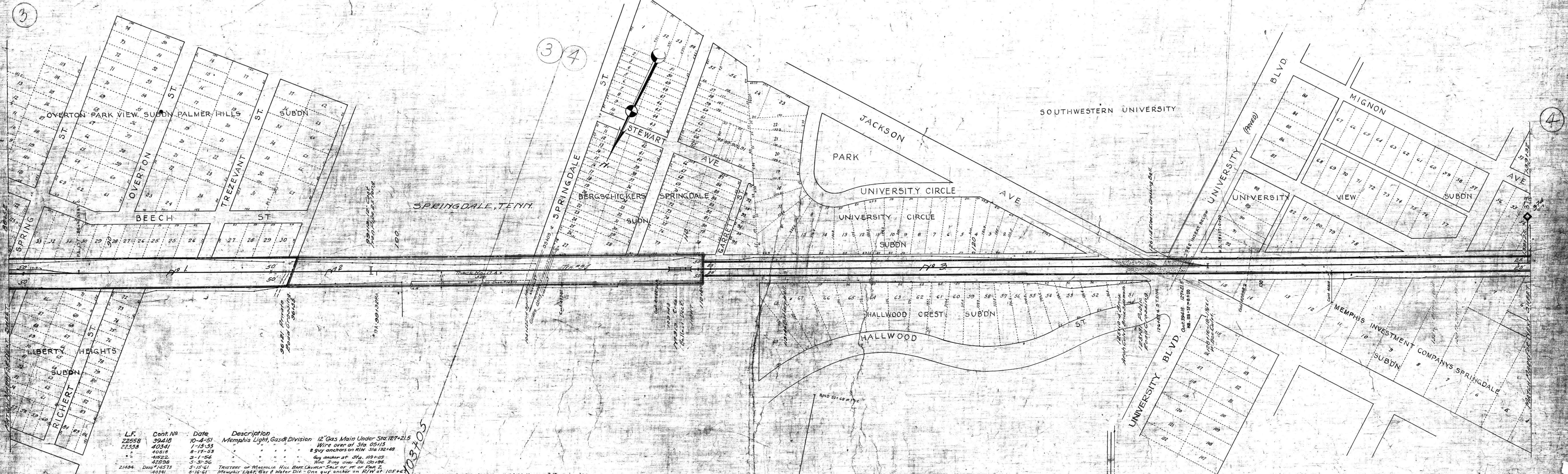
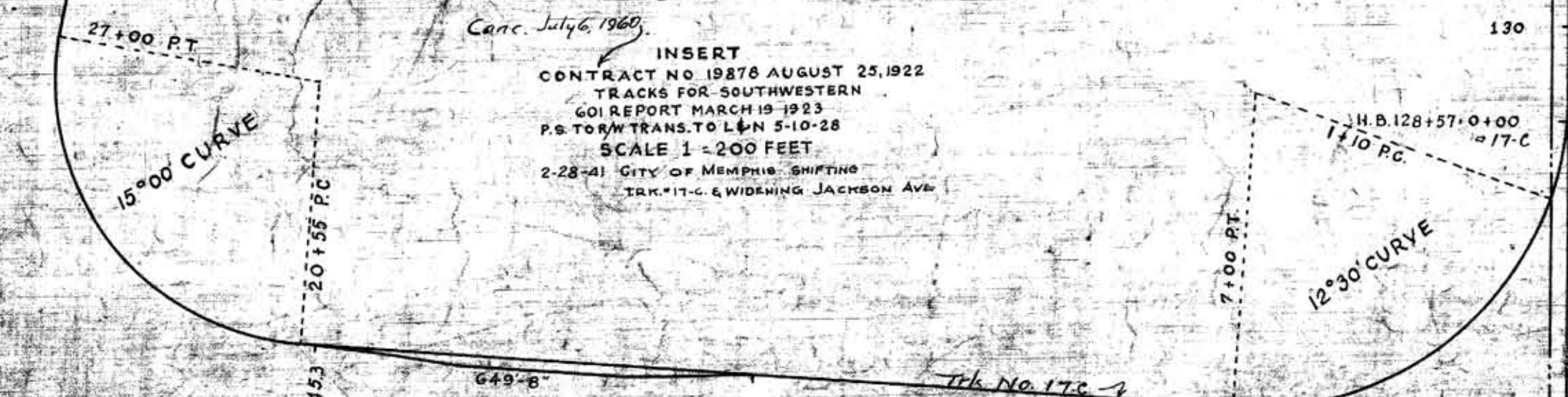


13218 5-29-31  
 13834 6-30-31  
 13693 10-19-31  
 19121 6-24-35  
 20275 8-16-44  
 18139 6-15-45  
 18958 4-23-47  
 53229 5-15-61  
 58149 9-30-65

Improvement of Chicago  
 Trust of Margaretta Bowers with electric filter at Jackson Ave & University Place with  
 Flashing Lights at Jackson Ave  
 Springdale St  
 Improving Ring at  
 TRM Rebuilt  
 Bridge #35 109+45 Rebuilt  
 Concrete & Asphalt Sidewalk across trks. of University and Jackson Ave.  
 Sidewalk at Spring St  
 Ref. of C.150 light in Part 2  
 Coast Track NE 12-F



L.F.	Cont. No.	Date	Description
22558	39418	10-4-51	Memphis Light, Gas & Division 12" Gas Main Under Sta. 127+21.5
22558	40341	1-15-53	Wire over at Sta. 05+15
"	40818	8-17-53	2 guy anchors on R/W Sta. 132+49
"	40822	3-1-54	guy anchor at Sta. 109+00
"	42898	5-31-56	Wire King over Sta. 130+96
21404	DEED 14573	5-15-61	TRUSTEES OF MAGNOLIA HILL BAPT. CHURCH - SALE OF PT. OF PLOT 2
"	40341	8-16-61	Memphis Light, Gas & Water Div - One guy anchor on R/W at 105+67
"	51056	9-12-65	1stly Cooper Const. Track No. 132 User 10-12-65 Home Bldg. Supply User 109 E.L. Bruce Paneling Co. - User 1-24-66 House of Ceramics, Inc.



**STATION MAP**  
**LOUISVILLE AND NASHVILLE R.R.CO.**  
**MEMPHIS TERMINALS-MEMPHIS LINE**  
**STATION 86+52 TO STATION 138+32**  
 SCALE 1 INCH = 100 FEET  
 JUNE 30 1917  
 OFFICE OF CHIEF ENGINEER  
 MEMPHIS, TENN.